

零件目录 **2016**

PARTS CATALOGUE

<http://www.parsunchina.com>

PARSUN

SINCE 1968

百胜动力



两冲程/TWO STROKE

T4.8CBMS

T4.8CBML

苏州百胜动力机器股份有限公司

SUZHOU PARSUN POWER MACHINE CO.,LTD

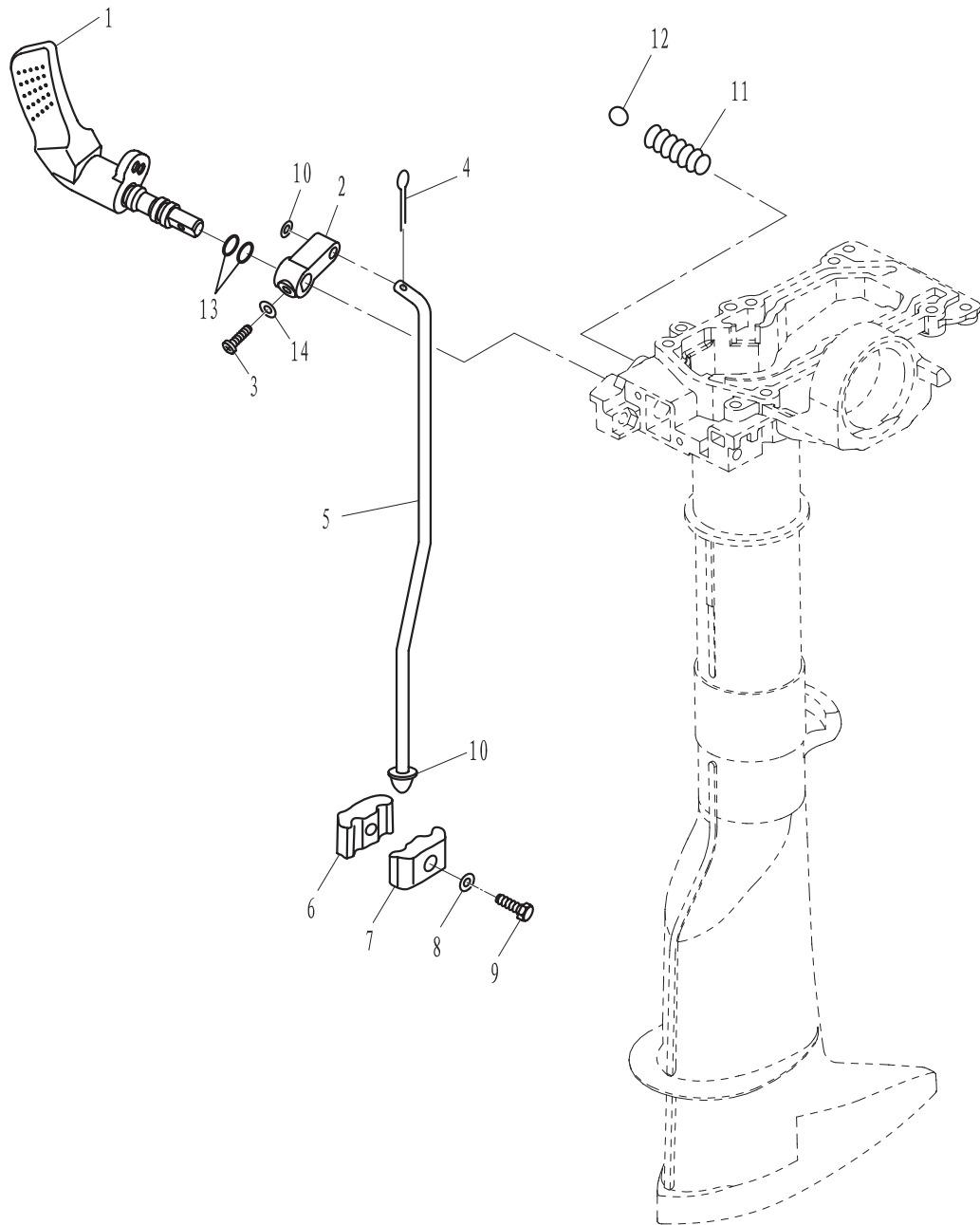
目录

CONTENTS

控制系统	1 ~ 2
CONTROL	1 ~ 2
托架	3 ~ 4
BRACKET	3 ~ 4
操舵系统	5 ~ 6
STEERING	5 ~ 6
水上装置壳体	7 ~ 8
UPPER CASING	7 ~ 8
水下装置壳体和驱动系统1	9 ~ 10
LOWER CASING & DRIVE 1	9 ~ 10
水下装置壳体和驱动系统2	11 ~ 12
LOWER CASING & DRIVE 2	11 ~ 12
点火系统	13 ~ 14
IGNITION SYSTEM	13 ~ 14
气缸和曲轴箱	15 ~ 16
CYLINDER & CRANKCASE	15 ~ 16
曲轴和活塞	17 ~ 18
CRANKSHAFT & PISTON	17 ~ 18
燃油系统	19 ~ 20
FUEL	19 ~ 20
进气系统	21
INTAKE	21
底罩	22
BOTTOM COWLING	22
顶罩	23
TOP COWLING	23
修理件1	24 ~ 25
REPAIR KIT 1	24 ~ 25
修理件2	26 ~ 27
REPAIR KIT 2	26 ~ 27

零部件名称: 控制系统

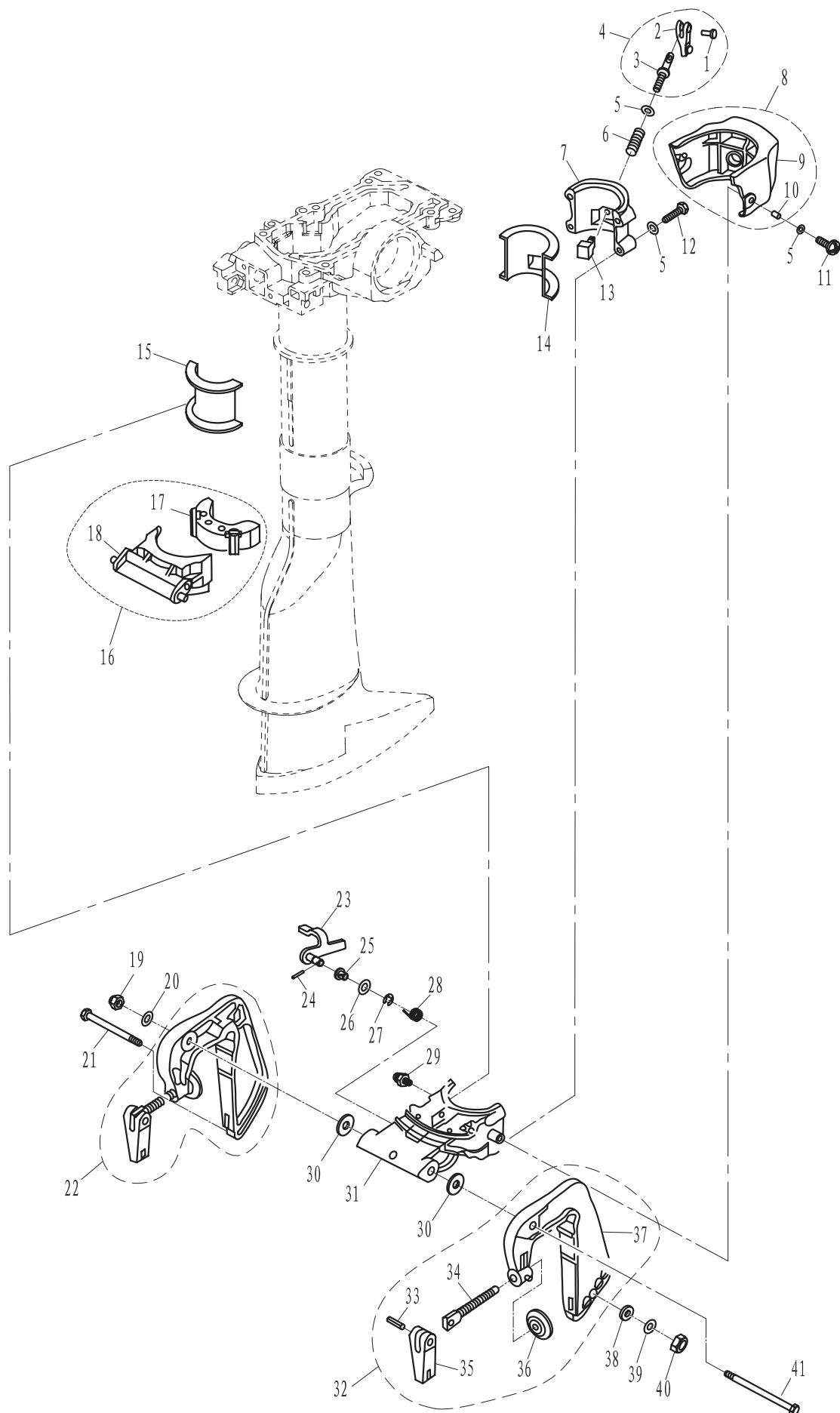
PARTS NAME: CONTROL



[illegible]

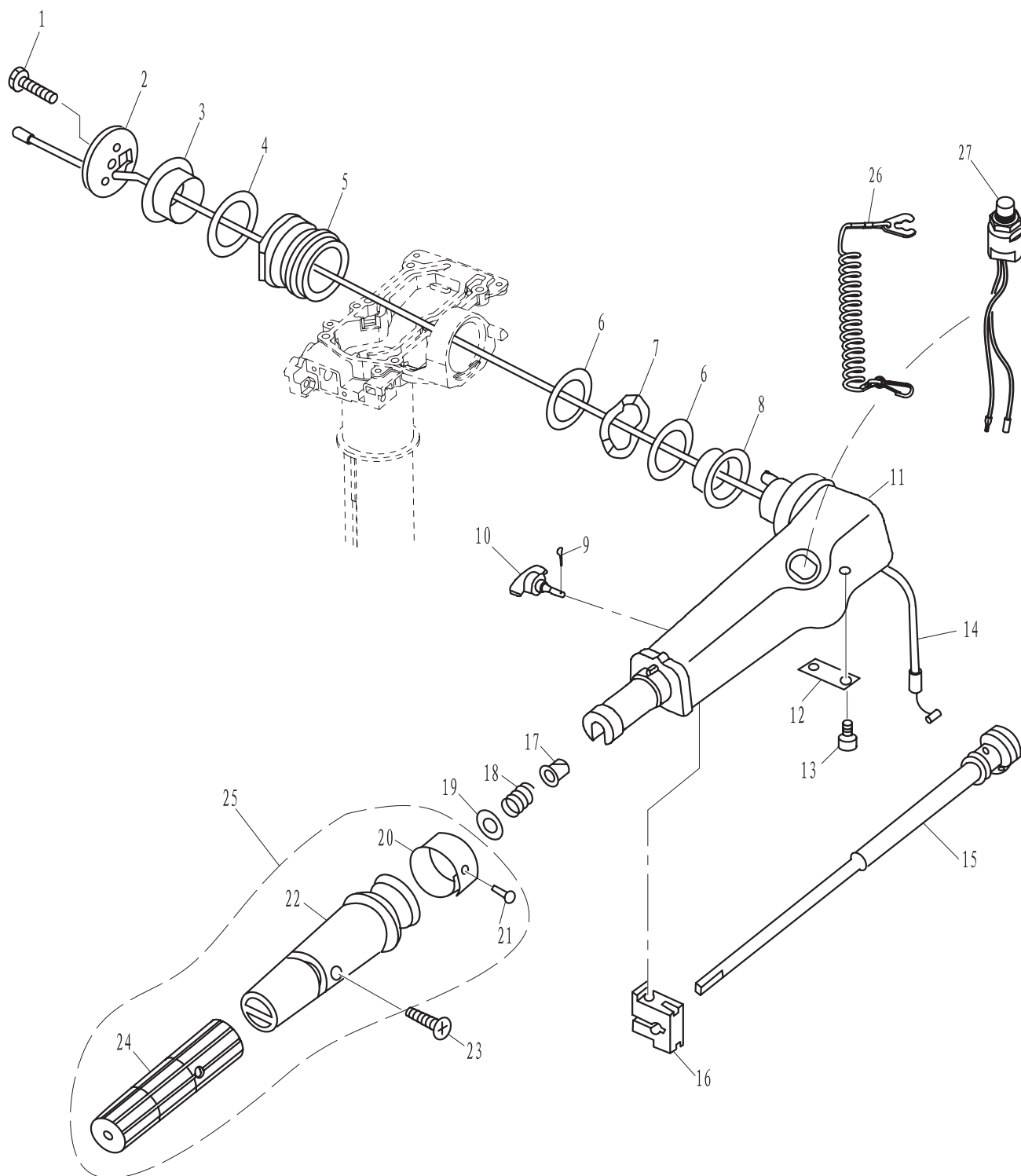
零部件名称: 托架

PARTS NAME: BRACKET



[illegible]

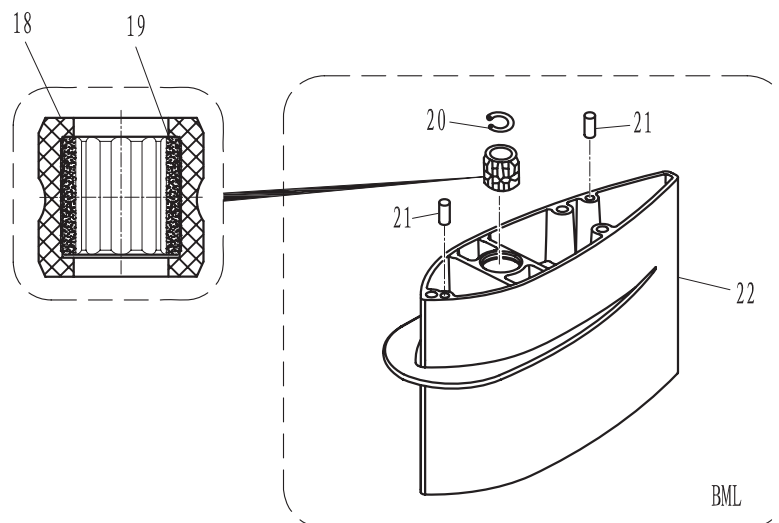
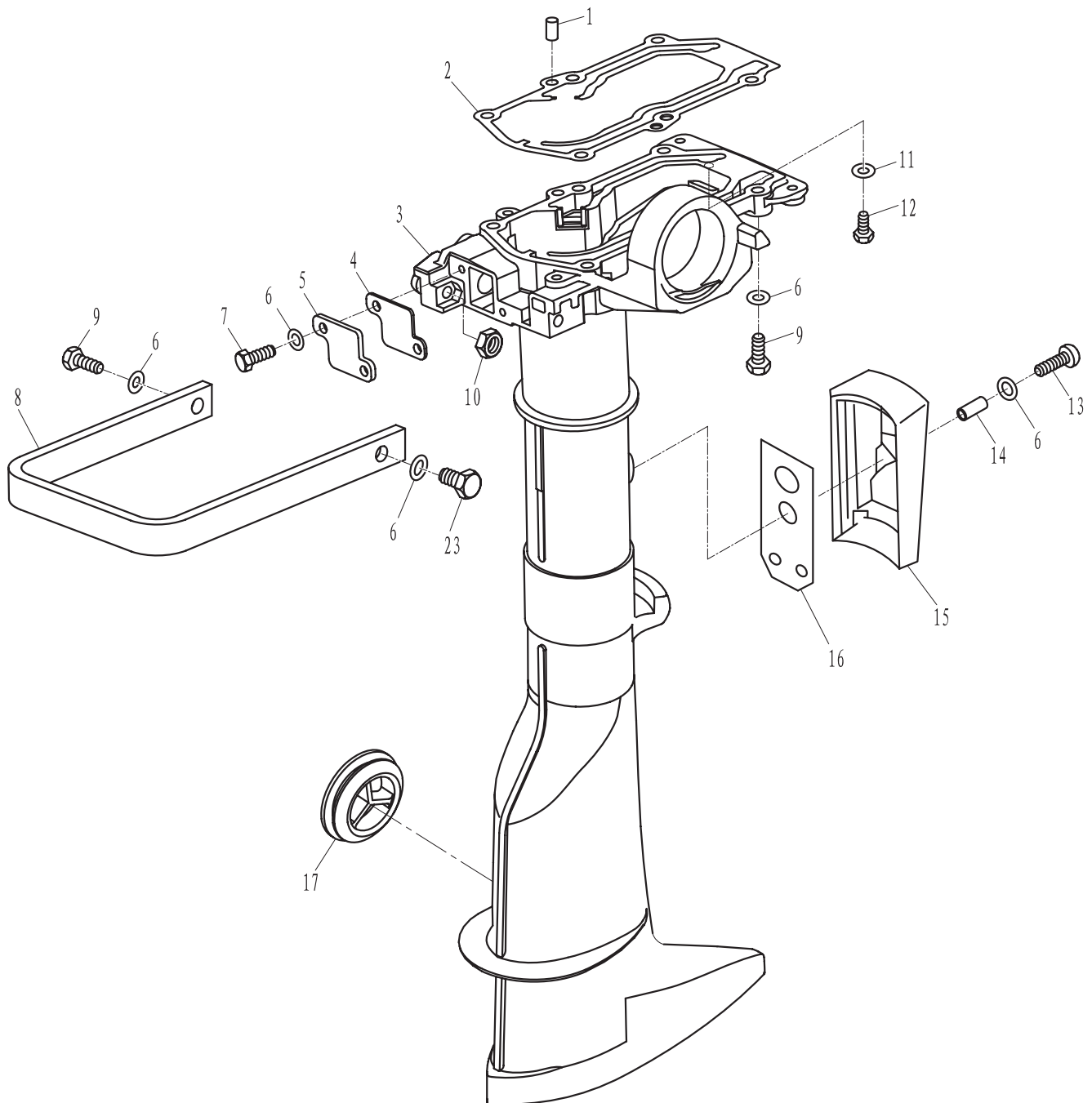
PARTS NAME:	STEERING
-------------	----------



[illegible]

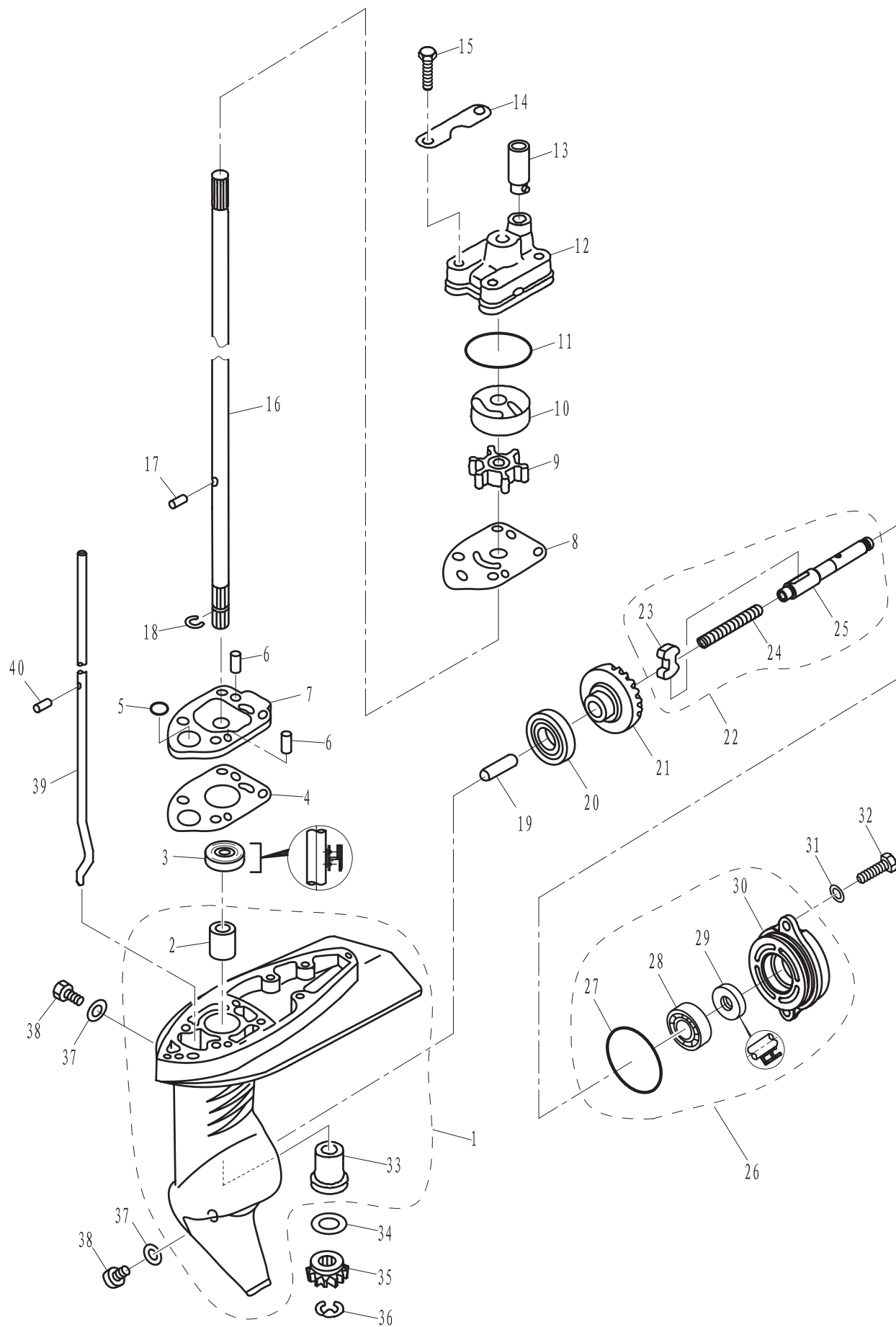
零部件名称: 水上装置壳体

PARTS NAME: UPPER CASING



零部件名称: 水下装置壳体 and 驱动系统1

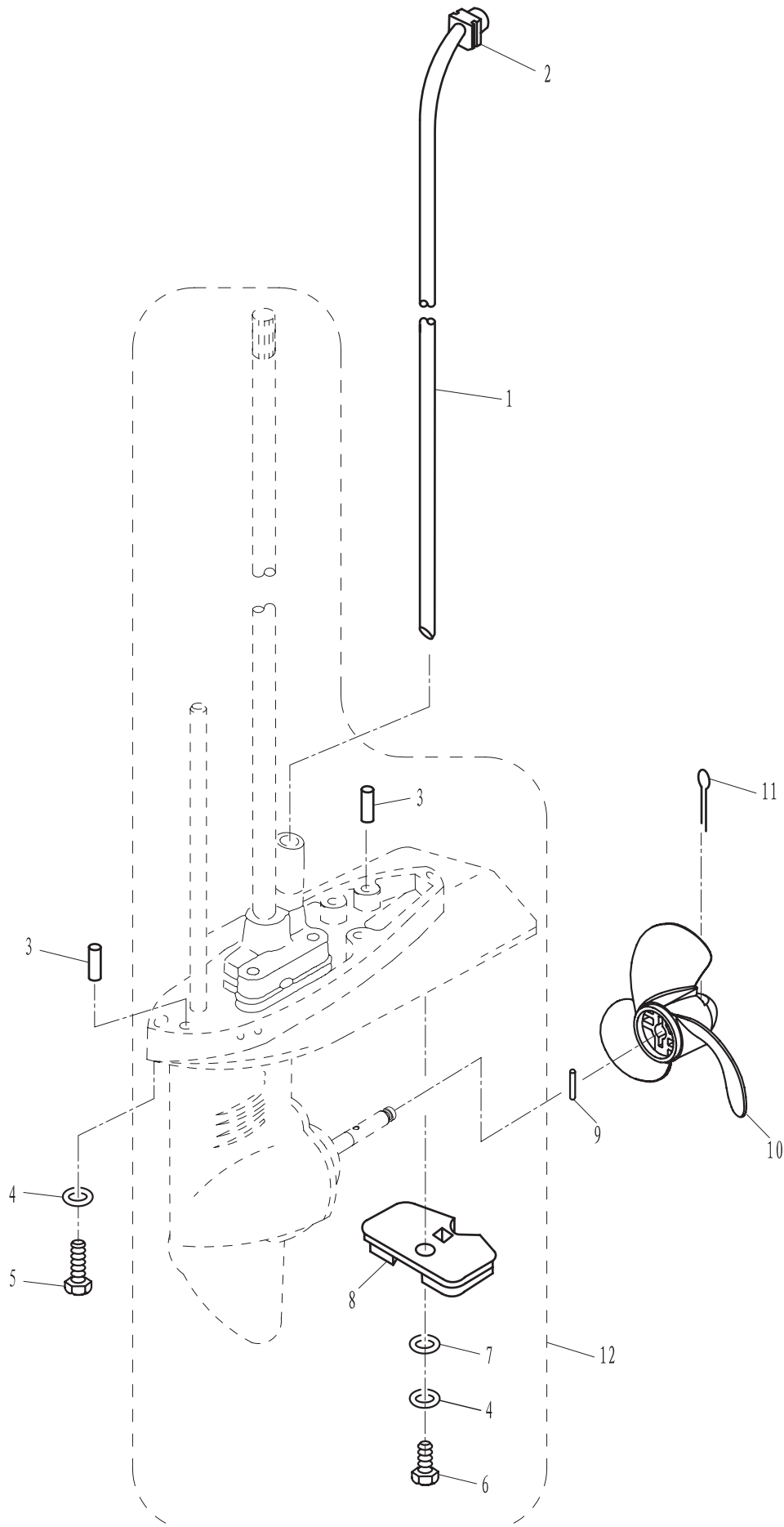
PARTS NAME: LOWER CASING & DRIVE 1



[illegible]

零部件名称: 水下装置壳体和驱动系统2

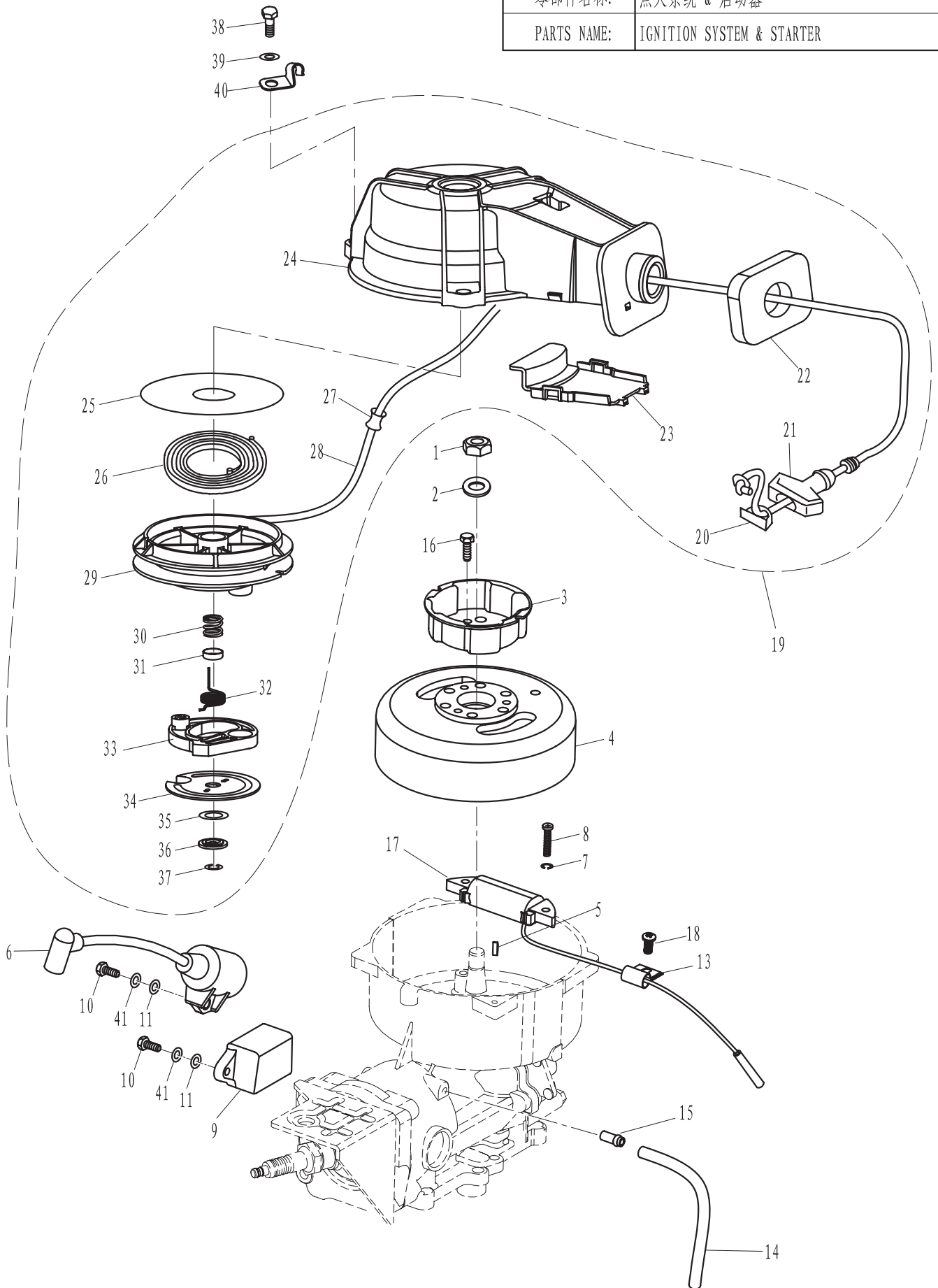
PARTS NAME: LOWER CASING & DRIVE 2



[illegible]

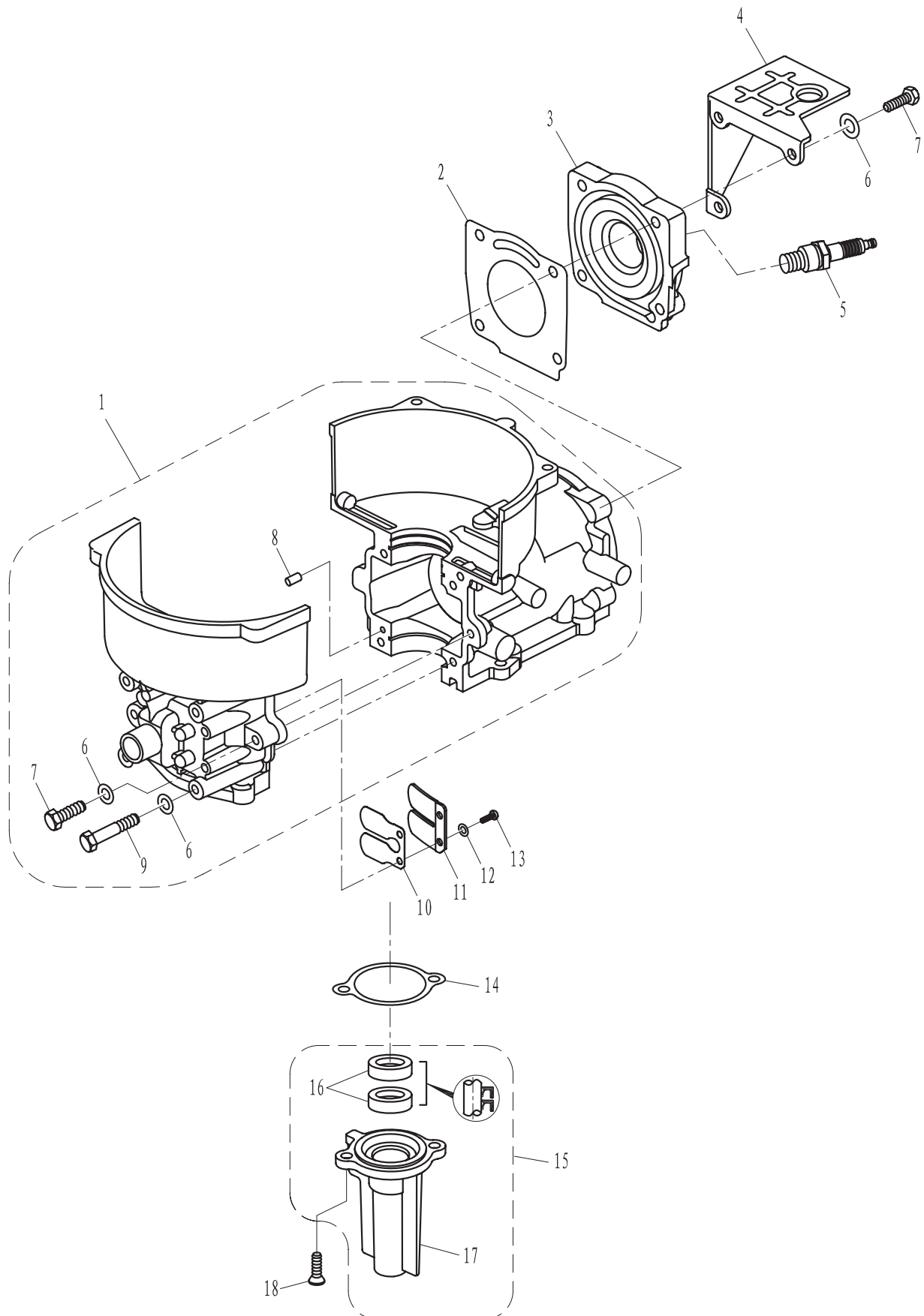
零部件名称: 点火系统 & 启动器

PARTS NAME: IGNITION SYSTEM & STARTER



零部件名称: 汽缸 & 曲轴箱

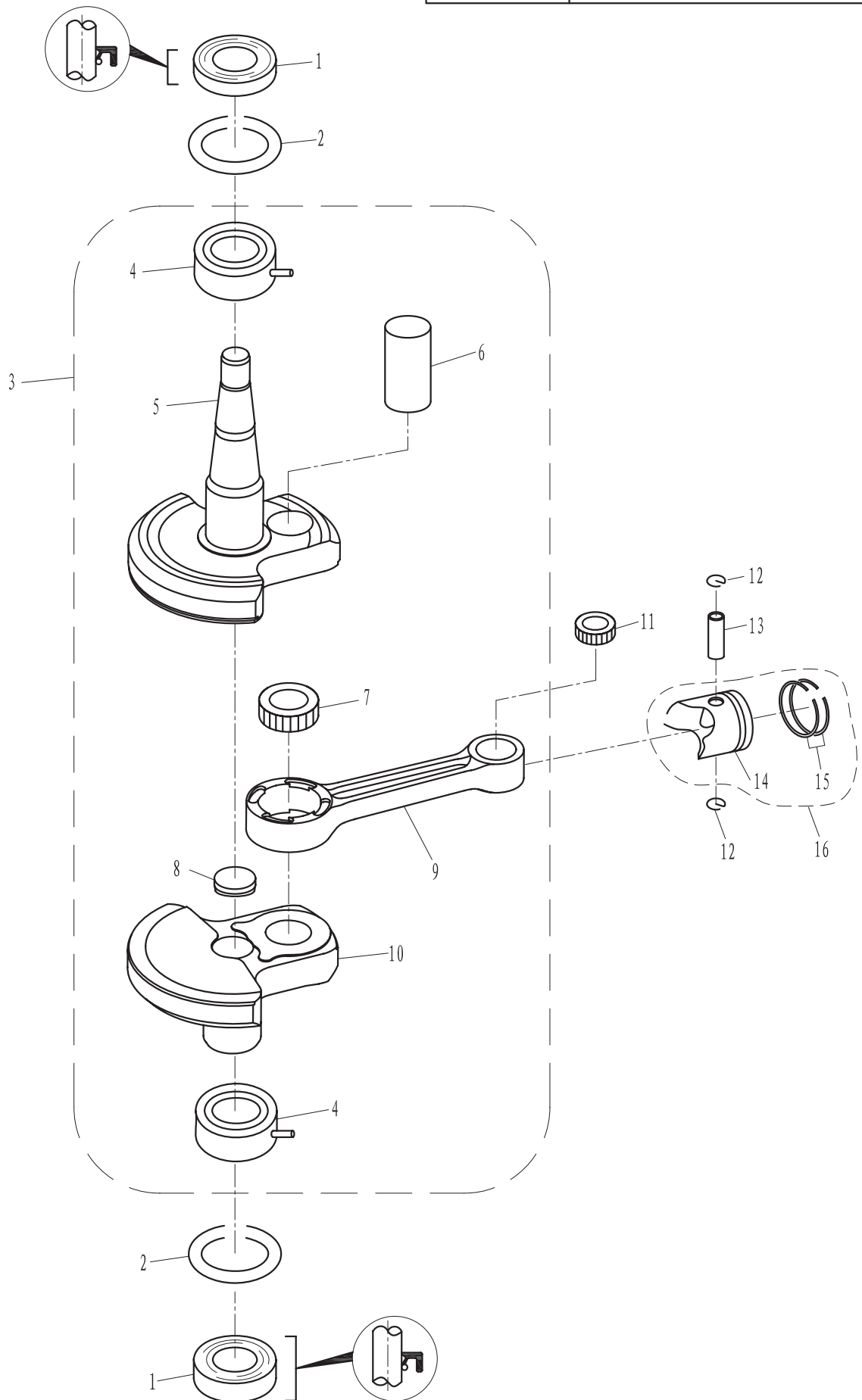
PARTS NAME: CYLINDER & CRANKCASE



[illegible]

零部件名称: 曲轴&活塞

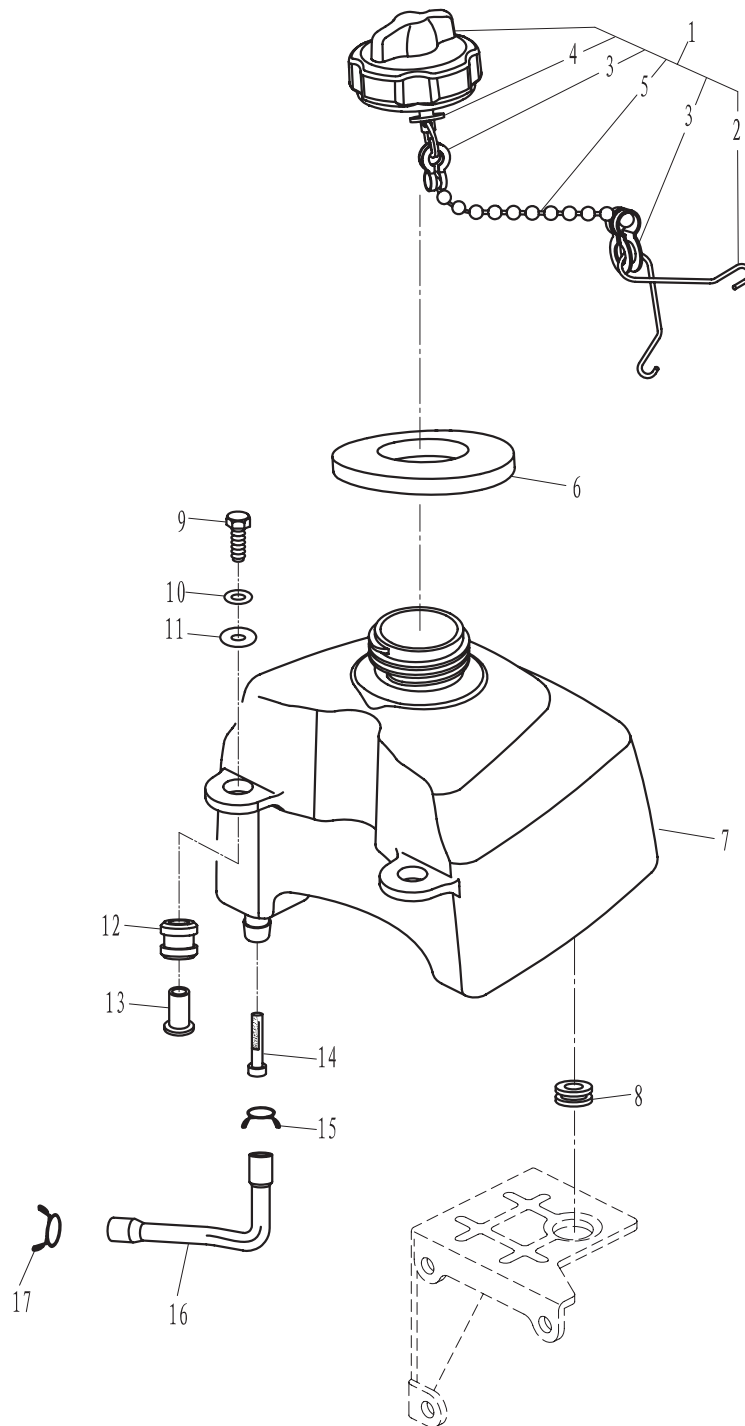
PARTS NAME: CRANKSHAFT & PISTON



[illegible]

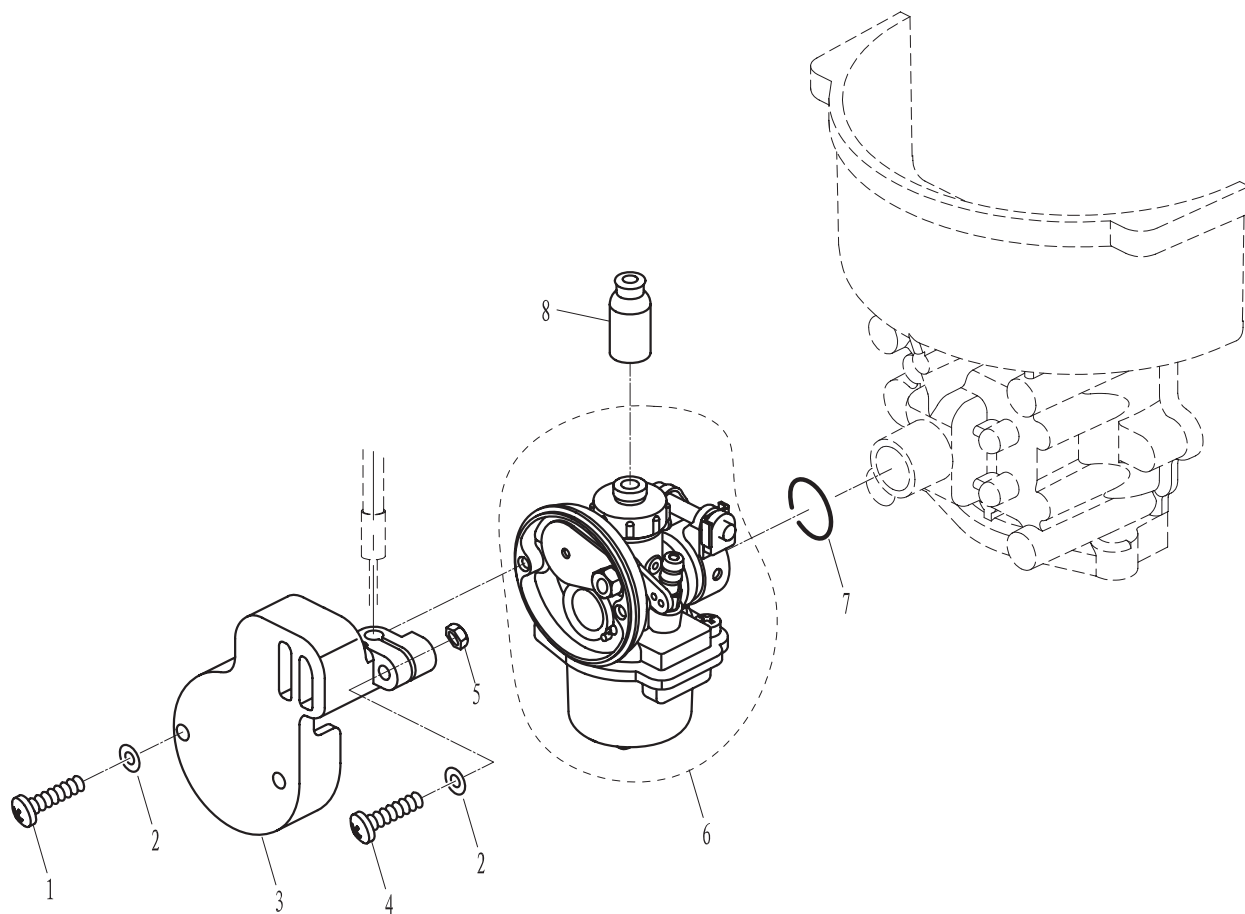
零部件名称: 燃油系统

PARTS NAME: FUEL



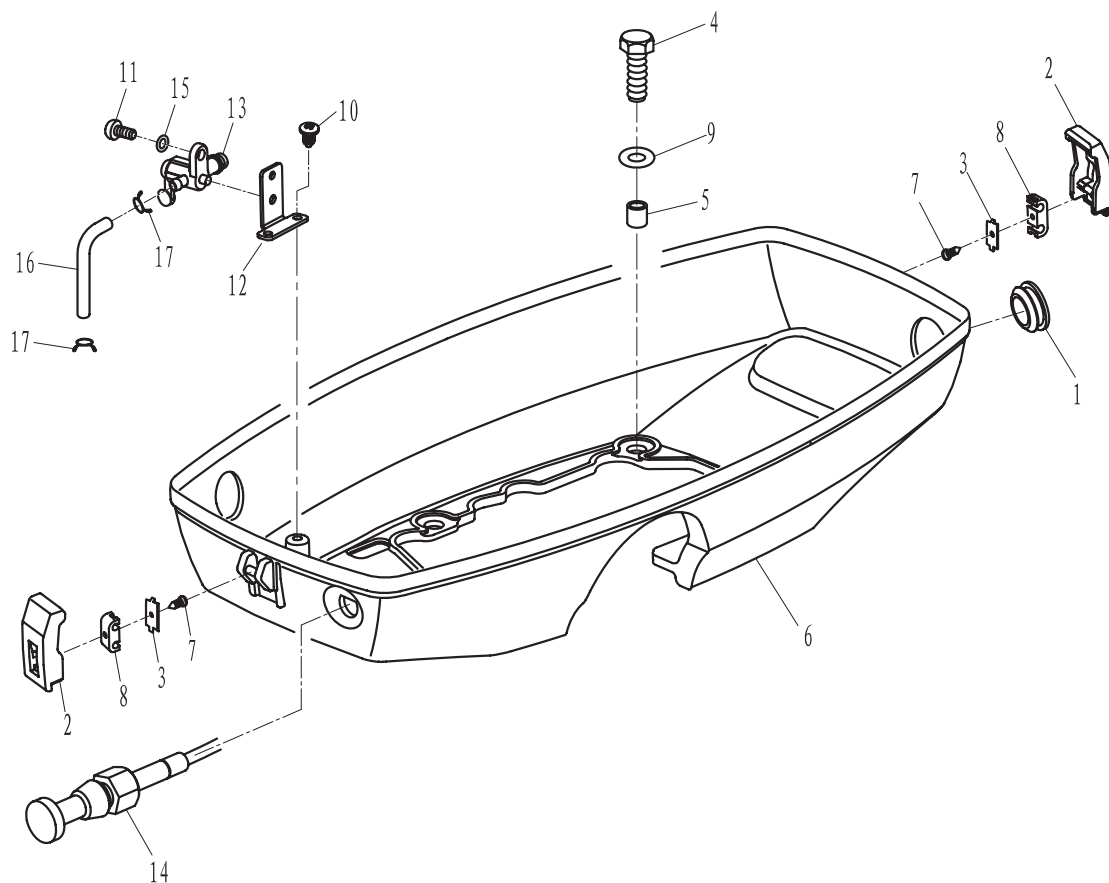
[illegible]

PARTS NAME:	INTAKE
-------------	--------

[illegible]

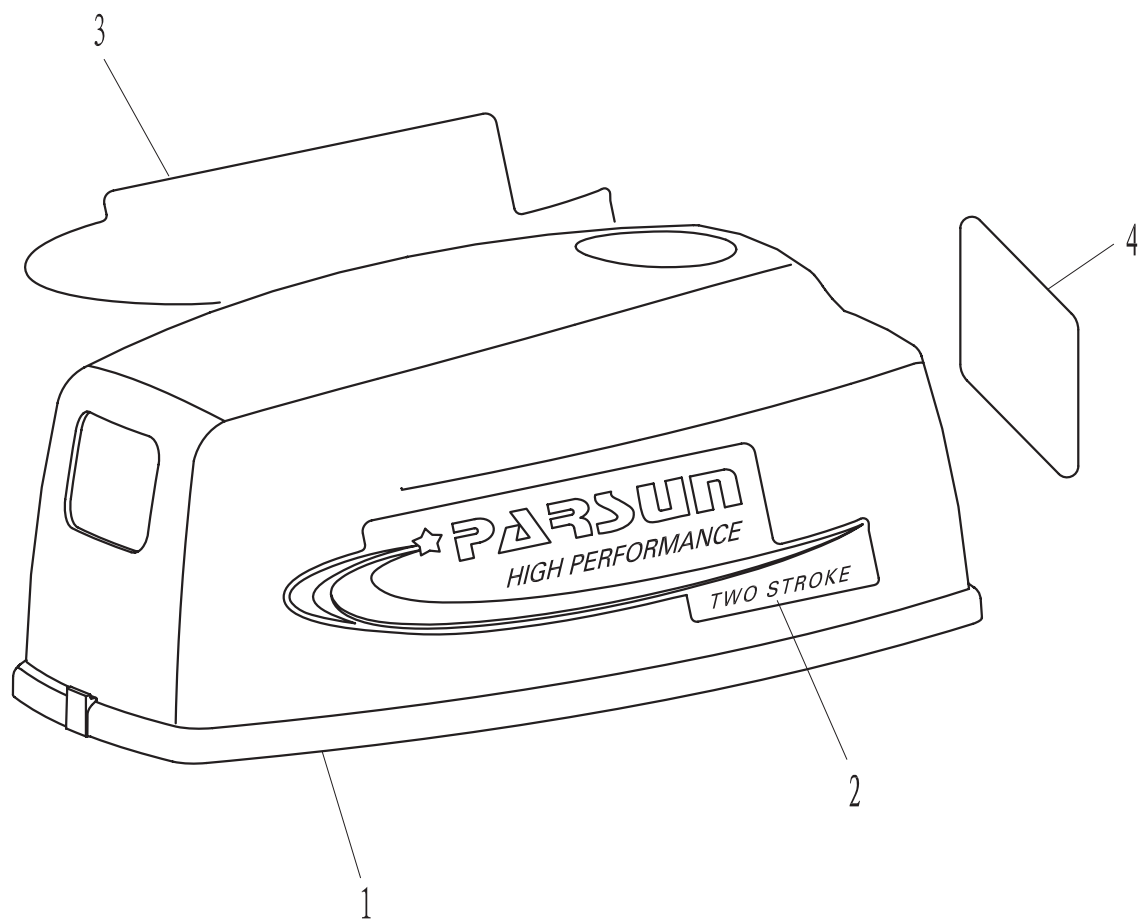
零部件名称: 底罩

PARTS NAME: BOTTOM COWLING



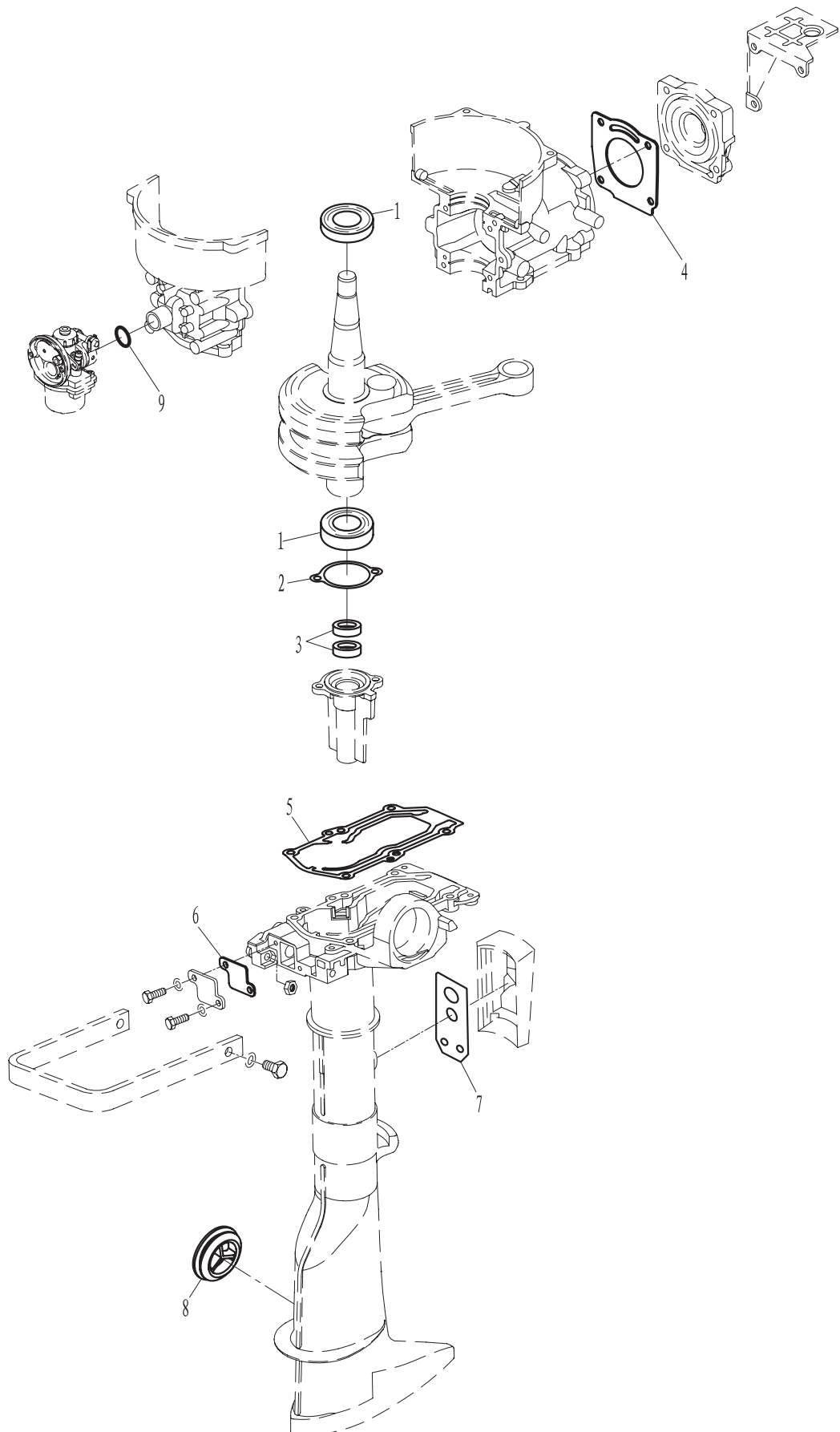
SN. 参照号码	PART NO. 零件编号	DESCRIPTION 零件名称 (中文)	DESCRIPTION 零件名称 (英文)	QTY 数量				PC 售价	REMARKS 备注
1	T3.6-05000003	圆形堵塞	RUBBER PLUG, CIRCULAR	1				4.5	
2	F2.6-05000008	顶罩锁紧钩	HOOK, LOCKING	2				6	
3	F2.6-05000010	金属连接杆	METALLIC LINK ROD	2				4.5	
4	GB/T5783-M6x16	六角螺栓 M6x16	BOLT M6X16	4				1.5	
5	T3.6-05000002	底罩垫管	TUBE, BOTTOM COWLING	4				6	
6	T3.6-05000001	底罩	BOTTOM COWLING	1				186	
7	GB/T845-ST2.9x6.5	十字槽盘头自攻螺钉ST2.9x6.5	SCREW, TAPPING ST2.9x6.5	2				1.5	
8	F2.6-05000009	锁紧钩连接件	CONNECTER-ROD	2				4.5	
9	GB/T97.1-6	平垫圈 6	WASHER 6	4				1.5	
10	GB/T845-ST4.8x9.5	十字槽盘头自攻螺钉ST4.8x9.5	SCREW, TAPPING ST4.8x9.5	2				1.5	
11	GB/T818-M5x10	十字槽盘头螺钉 M5x10	SCREW M5X10	1				1.5	
12	T3.6-05000101	油开关固定板	PLAT, OIL SWITH	1				13.5	
13	T3.6-05000100	油开关组件	OIL SWITH ASSY	1				27	
14	T3.6-05000200	阻风门组件	CHOKE ASSY	1				31.5	
15	GB/T97.1-5	平垫圈5	WASHER 5	1				3	
16	T3.6-05000005	燃油管B $\phi 10 \times \phi 5$	OIL TUBE B	1				12	
17	F4-04000030	油管夹簧B	CIRCLIP B	2				1.5	

PARTS NAME:	TOP COWLING
-------------	-------------

[illegible]

零部件名称: 附件 I (维修件)

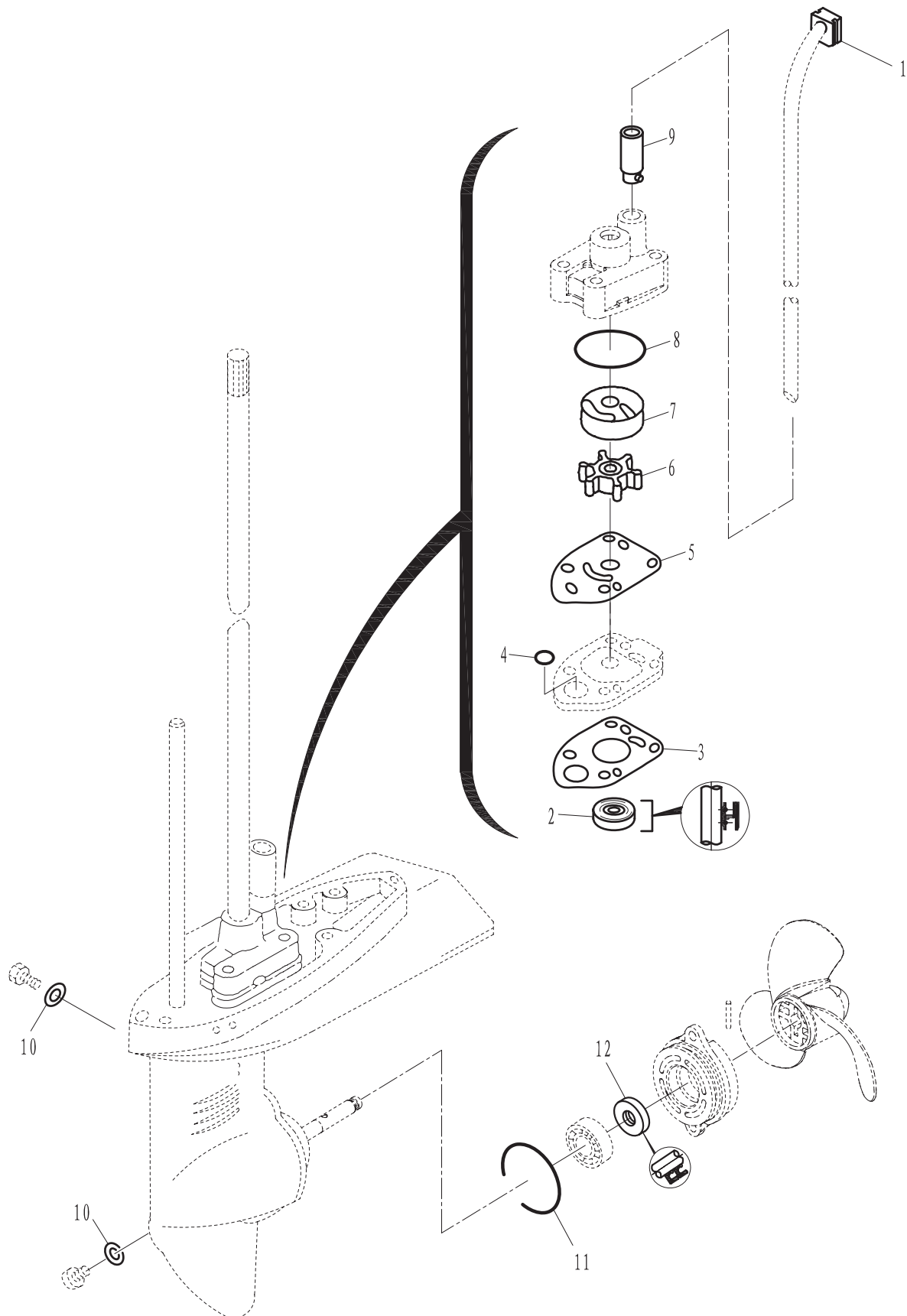
PARTS NAME: APPENDIX I (REPAIR KIT)



[illegible]

零部件名称: 附件 II (维修件)

PARTS NAME: APPENDIX II (REPAIR KIT)



[illegible]