

零件目录 2016

PARTS CATALOGUE

<http://www.parsunchina.com>

PARSUN

SINCE 1968

百胜动力



四冲程/TWO STROKE

F30CBMS

F30CBML

苏州百胜动力机器股份有限公司

SUZHOU PARSUN POWER MACHINE CO.,LTD

目录

CONTENTS

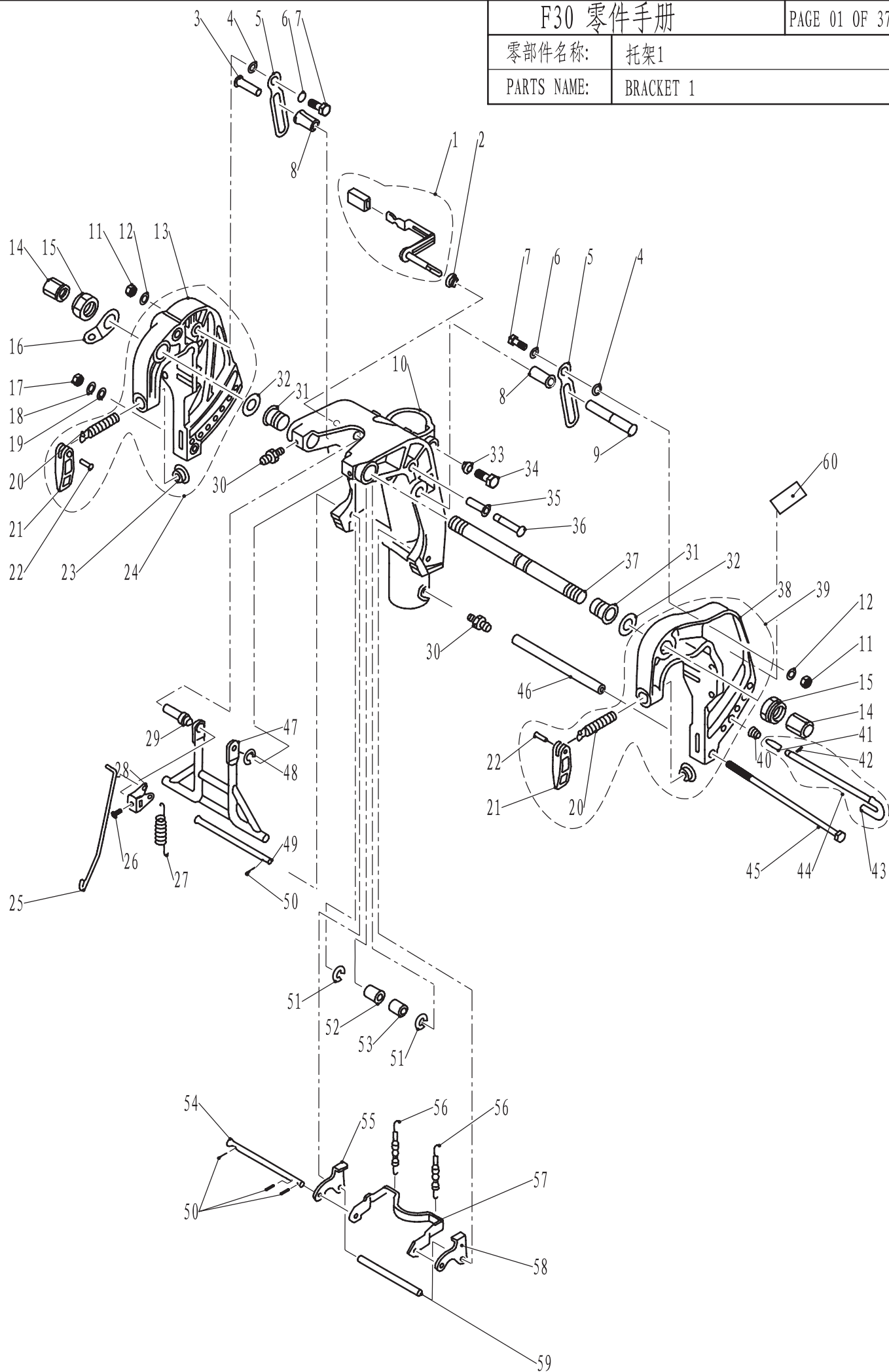
托架 1	1 ~ 3
BRACKET 1	1 ~ 3
托架 2	4 ~ 5
BRACKET 2	4 ~ 5
操舵系统	6 ~ 7
STEERING	6 ~ 7
水上装置壳体	8
UPPER CASING	8
油底壳组件	9
OIL PAN	9
底罩	10 ~ 11
BOTTOM COWLING	10 ~ 11
控制系统	12 ~ 13
CONTROL SYSTEM	12 ~ 13
水下装置壳体和驱动系统 1	14 ~ 16
LOWER CASING & DRIVE 1	14 ~ 16
水下装置壳体和驱动系统 2	17
LOWER CASING & DRIVE 2	17
电气	18
ELECTRICAL	18
进气系统	19 ~ 20
INTAKE	19 ~ 20
气缸和曲轴箱	21 ~ 23
CYLINDER & CRANKCASE	21 ~ 23
曲轴和活塞	24
CRANKSHAFT & PISTON	24
阀门	25
VALVE	25
油泵	26
OIL PUMP	26
燃油系统	27 ~ 28
FUEL	27 ~ 28
起动器	29 ~ 31
STARTER	29 ~ 31
顶罩组件	32
TOP COWLING ASSY	32
燃油箱	33
FUEL TANK	33
附录1(修理件)	34 ~ 35
APPENDIX 1 (REPAIR KIT)	34 ~ 35
附录2(修理件)	36 ~ 37
APPENDIX 2 (REPAIR KIT)	36 ~ 37

零部件名称:

托架1

PARTS NAME:

BRACKET 1

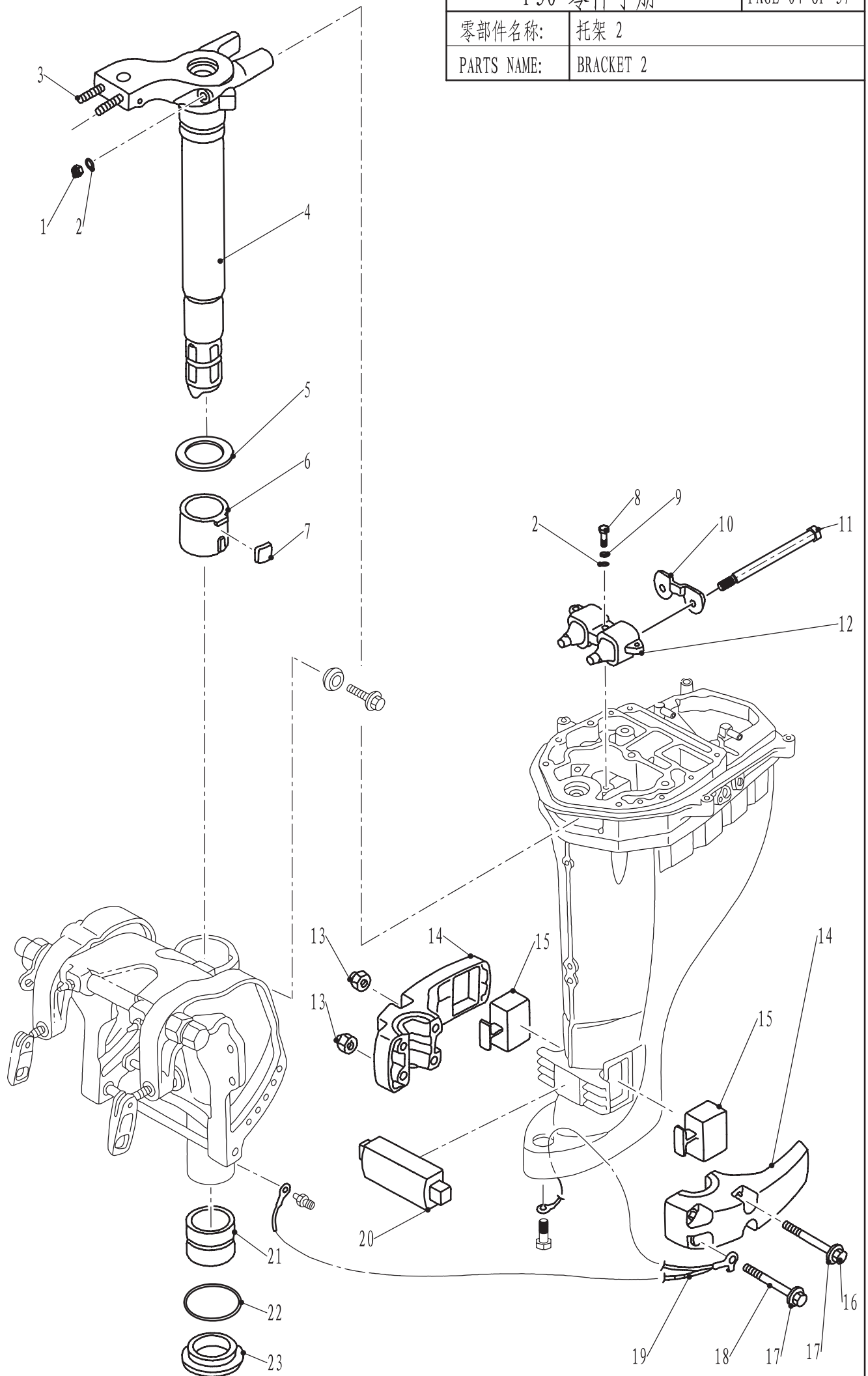


				F30 零件手册				PAGE 02 OF 37	
				零部件名称:		托架1			
				PARTS NAME:		BRACKET 1			
SN. 参照号码	PART NO. 零件编号	DESCRIPTION 零件名称 (中文)	DESCRIPTION 零件名称 (英文)	QTY 数量				PC 售价	REMARKS 备注
1	F25-01010312	角度锁紧手柄组件	TILT CLAMP HANDLE ASSY	1				94.5	
2	F25-01010311	锁紧手柄衬圈	WASHER	1				4.5	
3	F25-01010318	制动板销轴（短）	PIN, DETENT	1				28.5	
4	F25-01010009	尼龙垫圈	WASHER, NYLON	2				4.5	
5	F25-01010321	倾斜制动板	PLATE, TILT DETENT	2				30	
6	F25-01010008	波形垫圈	WASHER , WAVE	2				4.5	
7	F25-01010007	扁六角轴位螺钉	SCREW , PROLATE HEXAGON	2				45	
8	F25-01010319	销轴尼龙衬套（高）	GASKET , NYLON	2				10.5	
9	F25-01010322	制动板销轴（长）	PIN, DETENT	1				42	
10	F25-01010301	旋转支架	BRACKET , ROTARY	1				1800	L
	F25-01010301S	旋转支架	BRACKET , ROTARY	1				1740	S
11	GB/T6182-M8	非金属嵌件六角锁紧螺母M8	LOCKNUT M8	2				3	
12	F25-01010010	厚垫片8	THICK WASHER	2				6	
13	F25-01010201	右夹紧托架	BRACKET , RIGHT	1				637.5	
14	F25-01010011	塑料装饰螺母	NUT , PLASTIC	2				12	
15	F15-01010007	托架夹紧螺母	NUT , SELF-LOCKING	2				42	
16	F25-01010004	双孔固定板	PLATE , TWO HOLE	1				13.5	
17	GB/T6170-M8	六角螺母M8	NUT M8	1				3	
18	GB/T93-8	弹簧垫圈8	WASHER , SPRING 8	1				1.5	
19	GB/T97.1-8	平垫圈8	WASHER 8	1				1.5	
20	F25-01010104	舰板夹紧螺杆	SCREW , CLAMP	2				67.5	
21	F25-01010102	舰板夹紧手柄	CLAMP HANDLE	2				28.5	
22	F25-01010103	舰板夹紧手柄铆钉	RIVET	2				4.5	
23	F4-01010003	舰板夹紧圆盘	CLAMP PLATE	2				13.5	
24	F25-01010200	右夹紧托架组件	RIGHT BRACKET ASSY	1				720	
25	F25-01010315	角度锁紧支架连杆	ROD , BRACKET	1				19.5	
26	GB/T818-M5x6	十字槽盘头螺钉M5×6	SCREW , PAN HEAD M5x6	1				1.5	
27	F25-01010314	角度支撑架拉簧	SPRING , TENSION	1				7.5	
28	F25-01010313	角度定位件	LEVER , ANGLE ORIENTATION	1				15	
29	F25-01010309	锁紧手柄轴套	BUSHING , HANDLE	1				45	
30	GB/T7940.1-M6	直通式压注油杯M6	OIL, CUP M6	3				18	
31	F25-01010002	螺管尼龙衬套	BUSH , NYLON	2				15	
32	F25-01010003	螺管垫圈	WASHER	2				6	
33	F25-01010302	锁紧螺栓密封圈	WASHER , SEAL	1				4.5	
34	F25-01010303	六角凸缘螺栓M8×20	HEXAGON BOLT	1				27	
35	F25-01010317	销轴衬套	BUSH , PIN	1				13.5	
36	F25-01010316	角度支撑架销轴	SHAFT , ANGLE BRACKET	1				27	
37	F15-01010001	夹紧托架双头螺管	BOLT, CLAMP BRACKET	1				126	
38	F25-01010101	左夹紧托架	BRACKET , LEFT	1				637.5	
39	F25-01010100	左夹紧托架组件	LEFT BRACKET ASSY	1				720	
40	F25-01010403	锥形弹簧	CONICAL SPRING	1					
41	F25-01010402	防脱落支脚	PLATE , PREVENT DESQUAMATION	1				132	
42	GB/T879.2-3x10	弹性圆柱销3×10	PIN , SPRING 3x10	1					

[illegible]

零部件名称: 托架 2

PARTS NAME: BRACKET 2



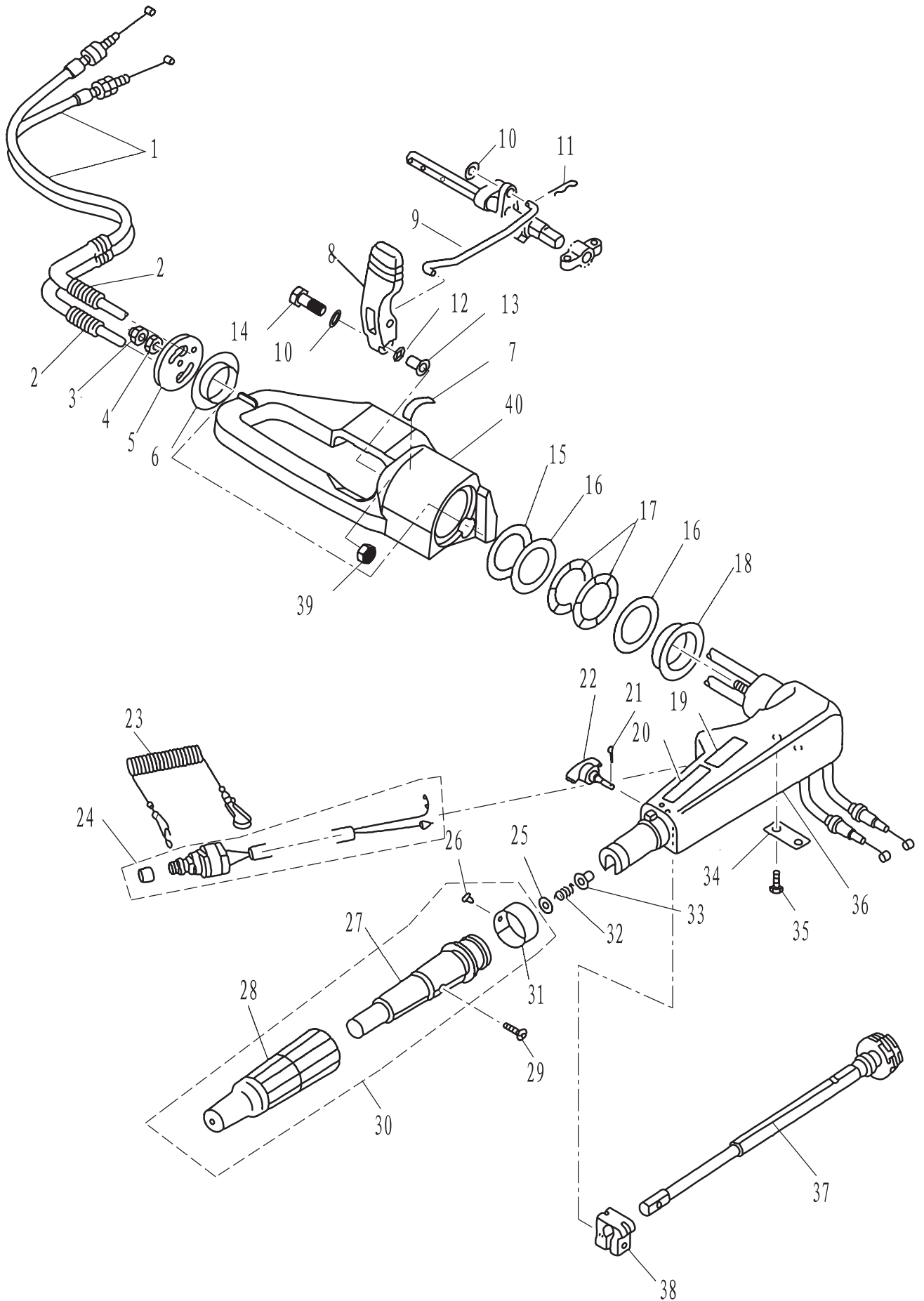
[illegible]

零部件名称:

操舵系统

PARTS NAME:

STEERING



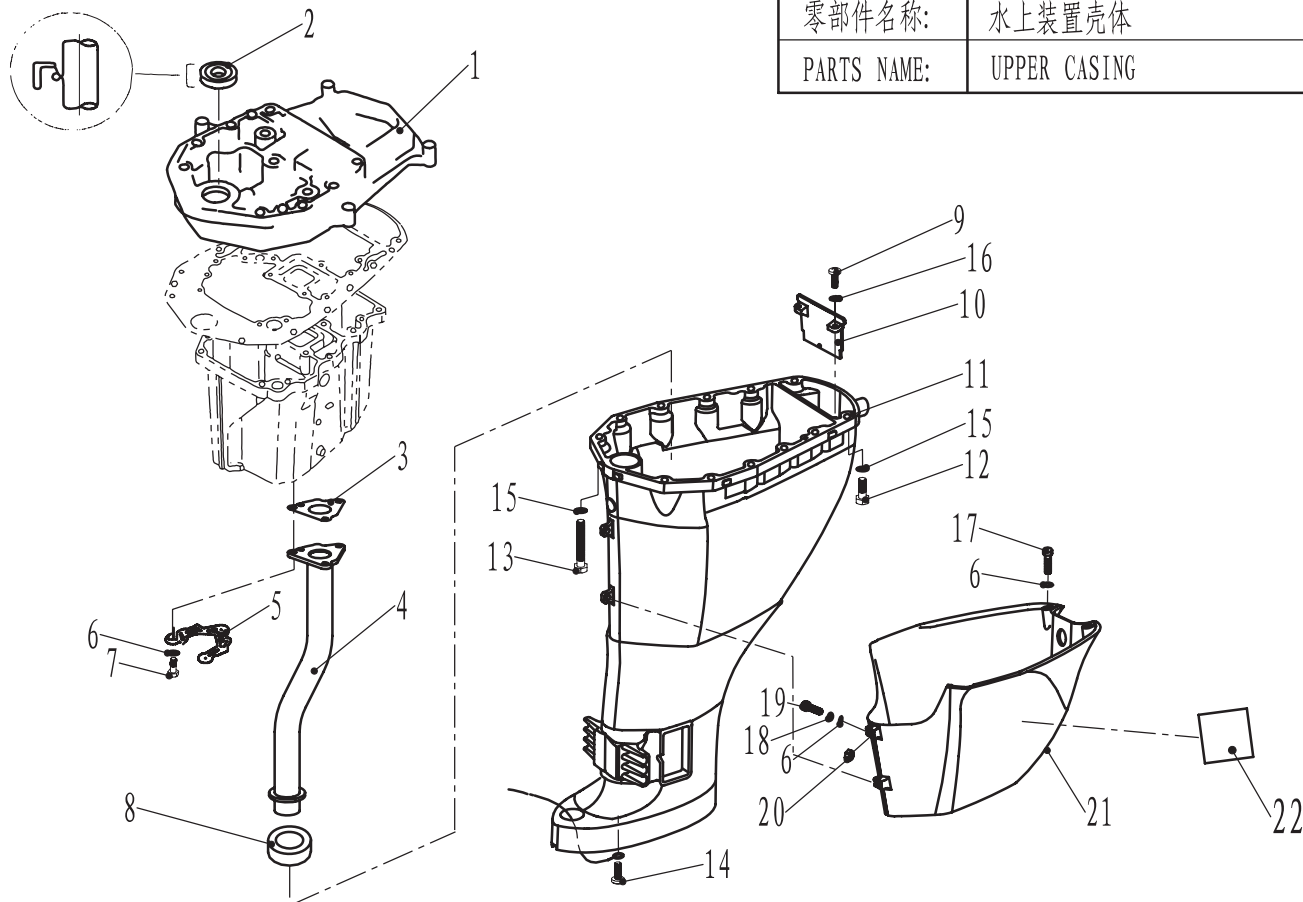
[illegible]

零部件名称:

水上装置壳体

PARTS NAME:

UPPER CASING



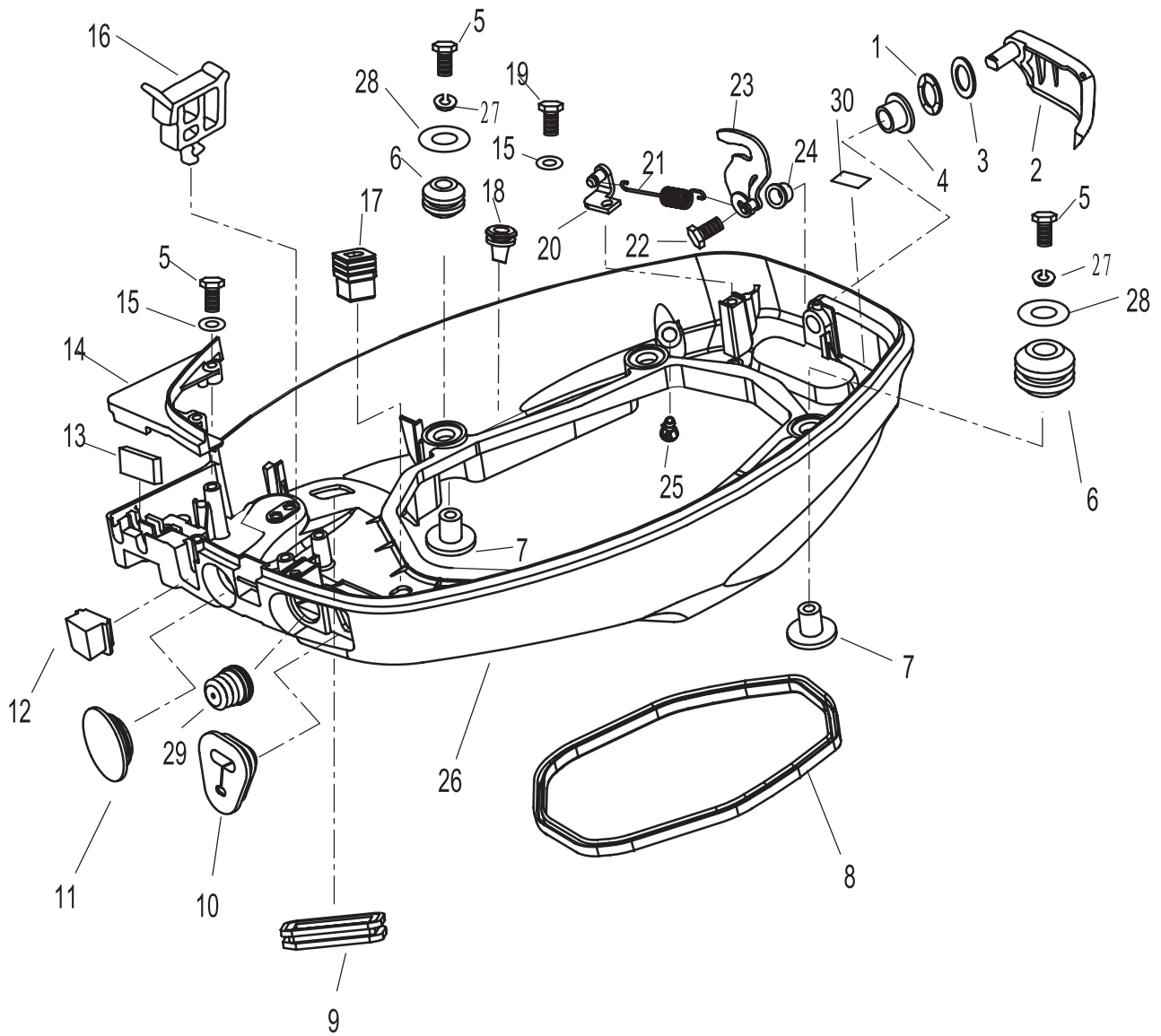
SN. 参照号码	PART NO. 零件编号	DESCRIPTION 零件名称 (中文)	DESCRIPTION 零件名称 (英文)	QTY 数量				PC 售价	REMARKS 备注
1	F25-02010001	排气歧管座	GUIDE EXHAUST	1				975	
2	F25-02010002	排气歧管座油封	OIL SEAL	1				36	
3	F25-02000011	排气导管垫	GASKET, EXHAUST PIPE	1				60	
4	F25-02020000	排气导管组件	EXHAUST PIPE ASSY	1				225	L
	F25-02020000S	排气导管组件	EXHAUST PIPE ASSY	1				216	S
5	F25-02000012	V形垫板	PLATE, "V"	1				25.5	
6	GB/T97.1-6	平垫圈6	WASHER 6	7				1.5	
7	GB/T5782-M6x50	六角螺栓M6x50	BOLT M6x50	3				4.5	
8	F25-02000014	排气管密封圈	SEAL, EXHAUST PIPE	1				19.5	
9	GB/T818-M5x16	十字槽盘头螺钉M5x16	SCREW, PAN HEAD M5x16	2				1.5	
10	F25-02000003	排气隔板	CLAPBOARD, EXHAUST	1				10.5	
11	F25-02000001	水上装置壳体	UPPER CASING	1				2280	L
	F25-02000001S	水上装置壳体	UPPER CASING	1				2235	S
12	GB/T5783-M8x30	六角螺栓M8x30	BOLT M8x30	4				10.5	
13	GB/T5782-M8x80	六角螺栓M8x80	BOLT M8x80	8				13.5	
14	GB/T818-M6x10	十字槽盘头螺钉M6x10	SCREW, PAN HEAD M6x10	1				1.5	
15	GB/T97.1-8	平垫圈8	WASHER 8	12				1.5	
16	GB/T97.1-5	平垫圈5	WASHER 5	2				1.5	
17	GB/T5783-M6x14	六角螺栓M6x14	BOLT M6x14	2				1.5	
18	GB/T93-6	弹性垫圈6	WASHER, SPRING	2				1.5	
19	GB/T818-M6x25	十字槽盘头螺钉M6x25	SCREW, PAN HEAD M6x25	2				1.5	
20	GB/T6170-M6	六角螺母M6	NUT M6	2				1.5	
21	F25-00000200	水上装置罩壳	MANTLE, UPPER CASING	1				408	
22	F15-12000004	标贴4	MARK 4	1				3	

零部件名称:

底罩

PARTS NAME:

BOTTOM COWLING

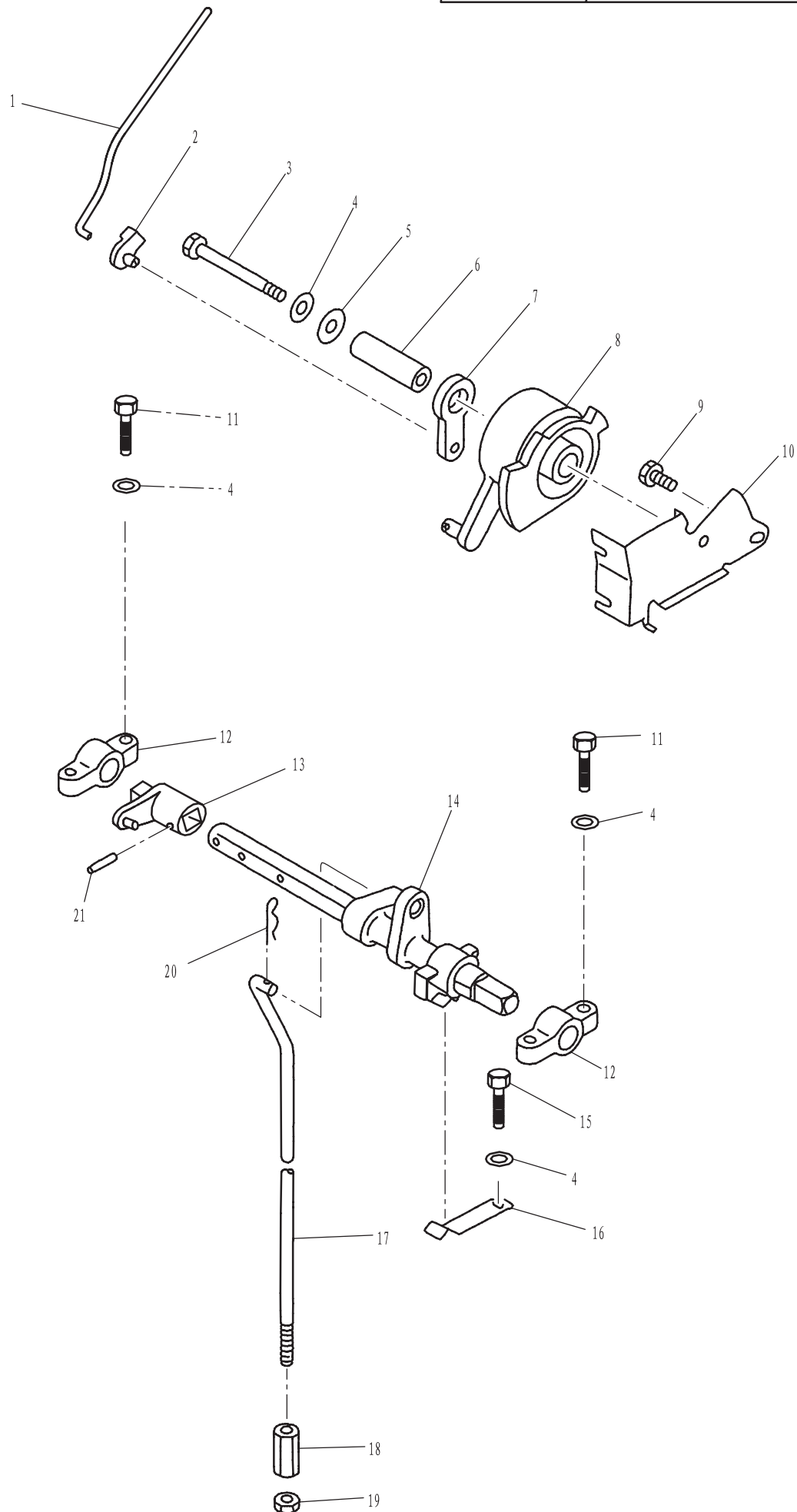


零件名称:

控制系统

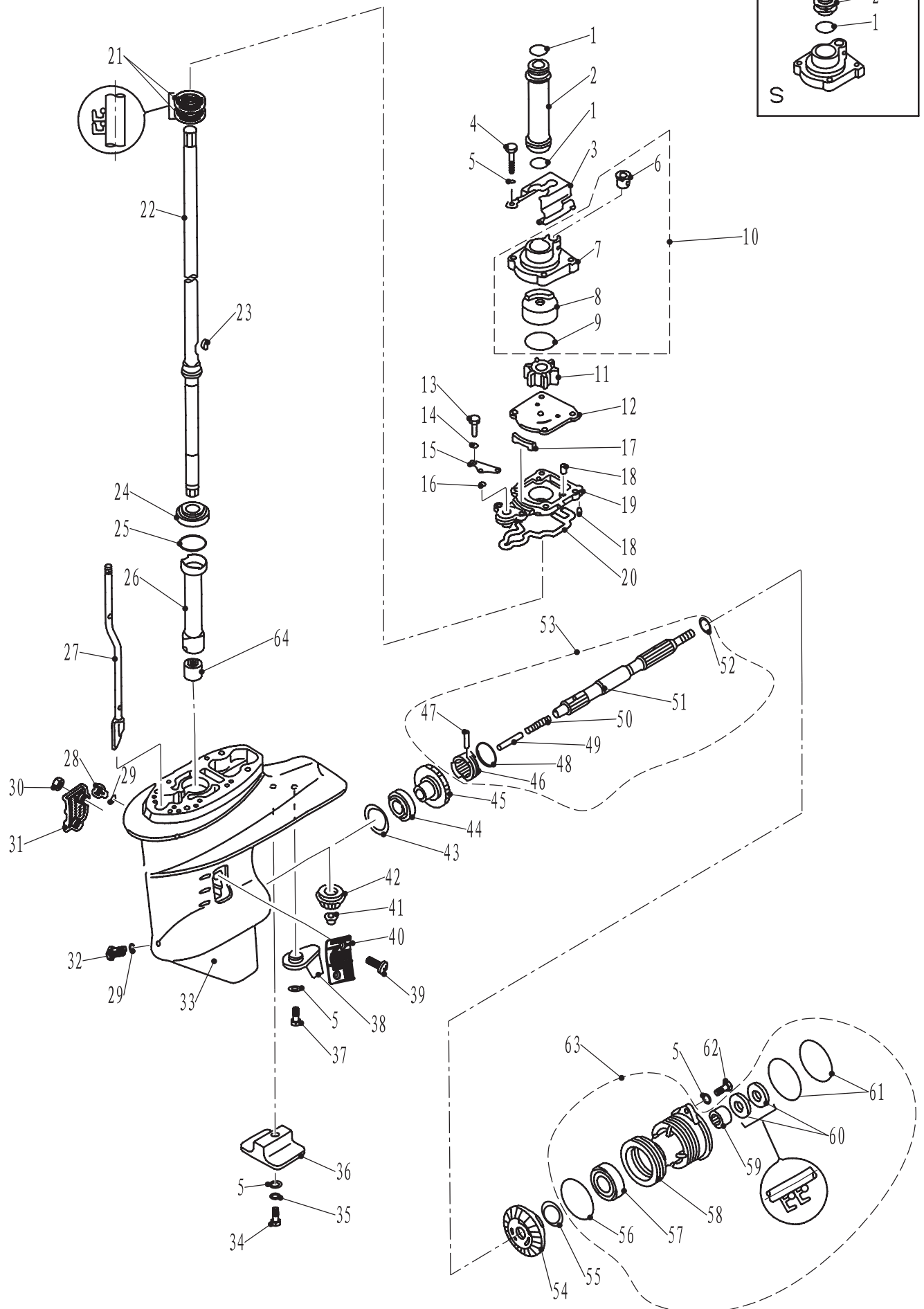
PARTS NAME:

CONTROL SYSTEM



零部件名称: 水下装置壳体 & 驱动系统 1

PARTS NAME: LOWER CASING & DRIVE 1



				F30 零件手册				PAGE150F37
				零部件名称:		水下装置壳体 & 驱动系统 1		
				PARTS NAME:		LOWER CASING & DRIVE 1		
SN. 参照号码	PART NO. 零件编号	DESCRIPTION 零件名称 (中文)	DESCRIPTION 零件名称 (英文)	QTY 数量			PC 售价	REMARKS 备注
1	GB/T3452.1-25.8x2.65	O形圈25.8×2.65	O-RING 25.8x2.65	2			3	
2	F25-04000017	驱动轴尼龙套	TUBE ,WATER	1			21	L
	F25-04000017S	驱动轴尼龙套	TUBE ,WATER	1			19.5	S
3	F25-040000016	泵壳异形固定板	FIXED PLATE,WATER PUMP	1			54	
4	GB/T5782-M6x40	六角螺栓M6×40	BOLT M6x40	4			6	
5	GB/T97.1-6	平垫圈6	WASHER 6	8			1.5	
6	F25-04050004	水管密封圈	DAMPER ,WATER PIPE	1			4.5	
7	F25-04050001	水泵壳体	SHELL ,WATER PUMP	1			36	
8	F25-04050002	水泵内壳	SHELL ,INNER	1			132	
9	F25-04050003	水泵壳体O形密封圈	O-RING	1			6	
10	F25-04050000	水泵壳体组件	SHELL ASSY, WATER PUMP	1			174	
11	F25-04040000	水泵叶轮组件	IMPELLER ASSY	1			63	
12	F25-04000014	外档板	OUTER PLATE	1			103.5	
13	GB/T5783-M6x25	六角螺栓M6×25	BOLT M6x25	2			4.5	
14	GB/T97.1-6	平垫圈6	WASHER 6	2			1.5	
15	F25-04000012	O形圈档板	PLATE ,O-RING	1			7.5	
16	F15-06020004	O形密封圈	O-RING	1			3	
17	F25-04000013	水封	WATER SEAL	1			4.5	
18	F25-04000007	定位销Φ4x10	PIN,DOWEL	3			4.5	
19	F25-04000008	驱动轴座	BASE ,DRIVE SHAFT	1			135	
20	F25-04000009	异形密封圈	SEAL	1			22.5	
21	F25-04010003	驱动轴油封22x36x6	OIL SEAL ,DRIVE SHAFT	2			36	
22	F25-04010000	驱动轴组件	DRIVE SHAFT ASSY	1			1776	L
	F25-04010000S	驱动轴组件	DRIVE SHAFT ASSY	1			1740	S
23	F25-04000015	半圆键	SEMICIRCULAR KEY	1			15	
24	HR32004XJ	驱动轴圆锥滚子轴承	HOUSING,BEARING	1			150	
25	F25-04000003-1	驱动轴填隙片 (t: 0.7毫米)	SHIM (t: 0.7mm)					
	F25-04000003-2	驱动轴填隙片 (t: 1.0毫米)	SHIM (t: 1.0mm)					
	F25-04000003-3	驱动轴填隙片 (t: 1.1毫米)	SHIM (t: 1.1mm)					
	F25-04000003-4	驱动轴填隙片 (t: 1.2毫米)	SHIM (t: 1.2mm)				7.5/片	
	F25-04000003-5	驱动轴填隙片 (t: 1.3毫米)	SHIM (t: 1.3mm)					
	F25-04000003-6	驱动轴填隙片 (t: 1.4毫米)	SHIM (t: 1.4mm)					
	F25-04000003-7	驱动轴填隙片 (t: 1.5毫米)	SHIM (t: 1.5mm)					
	F25-04000003-8	驱动轴填隙片 (t: 1.6毫米)	SHIM (t: 1.6mm)					
26	F25-04000002	长尼龙套管	BUSHING ,NYLON	1			25.5	
27	F25-04030000	变档凸轮组件	CAM ASSY,SHIFT ROD	1			66	L
	F25-04030000S	变档凸轮组件	CAM ASSY,SHIFT ROD	1			63	S
28	F4-03000023	注油孔螺塞	PLUG,HOLE OIL	1			10.5	
29	F4-03000024	注油孔螺塞垫圈	GASKET	2			3	
30	GB/T889.1-M5	I型非金属嵌件六角锁紧螺母M5	NUT, LOCKING M5	2			1.5	
31	F25-04000023	进水口B	WATER INLET "B"	1			9	
32	F25-04000031	放油螺塞	PLUG,DRAIN	1			25.5	
33	F25-04000001	水下装置壳体	LOWER CASING	1			1866	

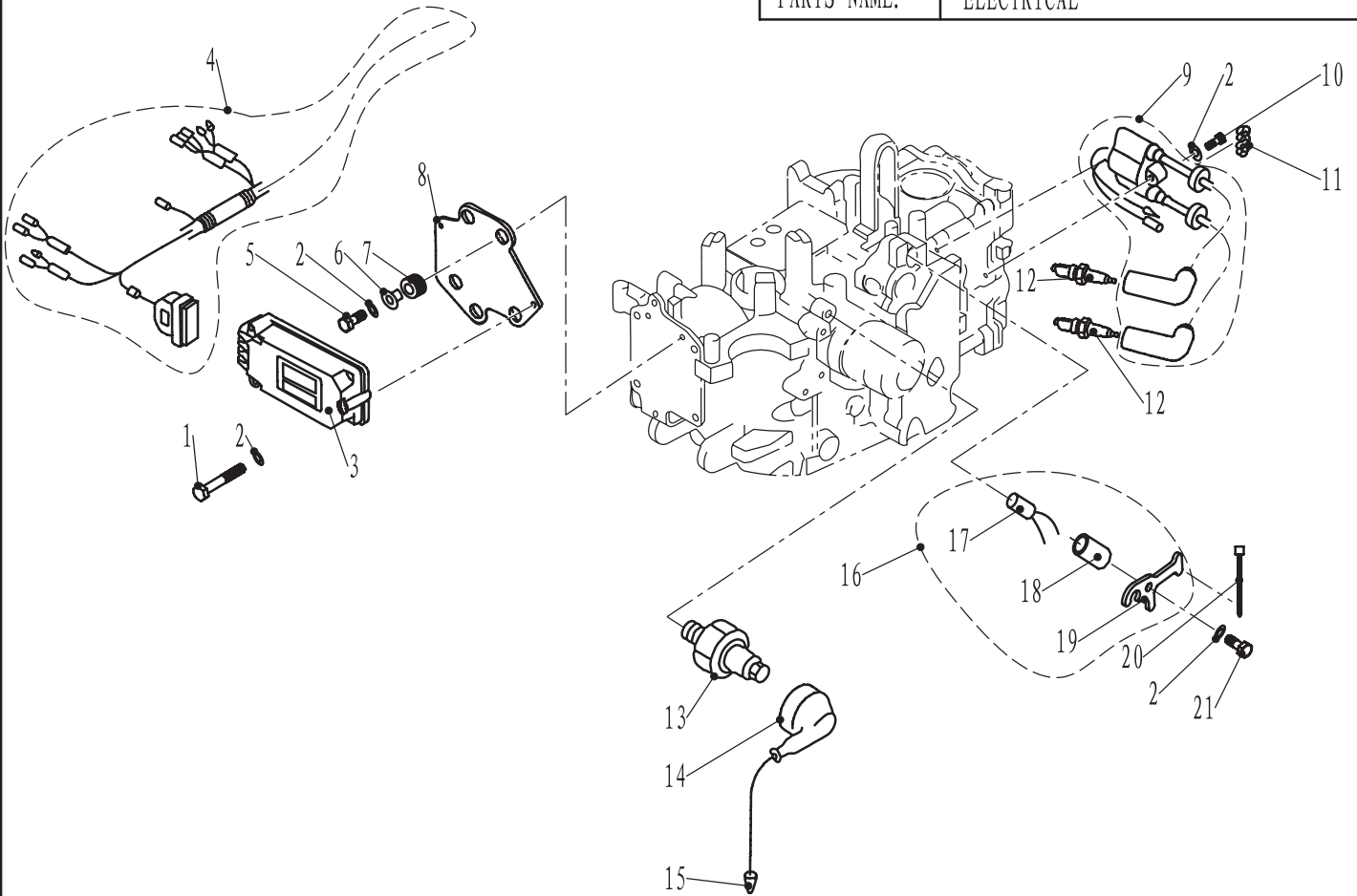
[illegible]

零部件名称:

电气

PARTS NAME:

ELECTRICAL



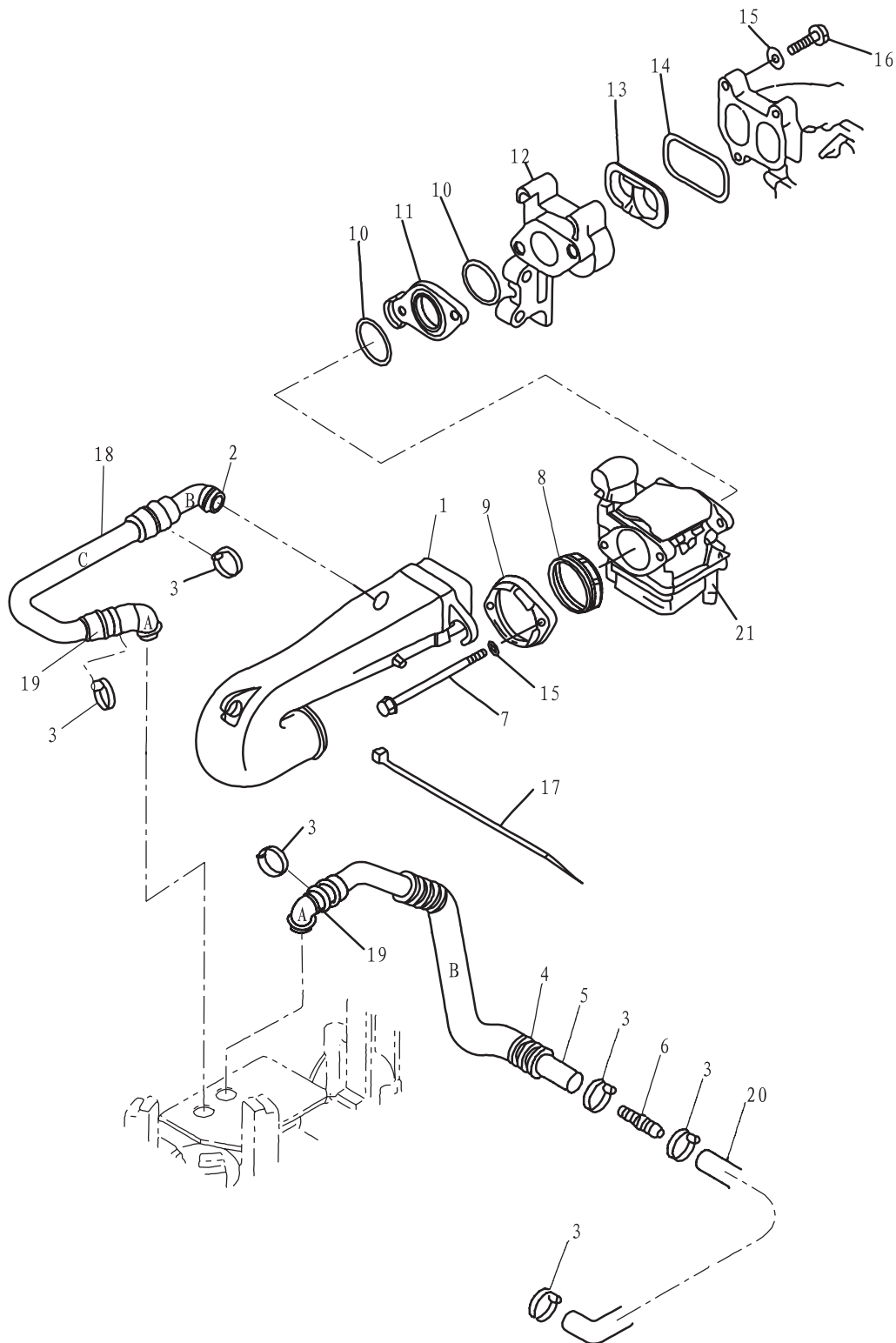
SN. 参照号码	PART NO. 零件编号	DESCRIPTION 零件名称 (中文)	DESCRIPTION 零件名称 (英文)	QTY 数量				PC 售价	REMARKS 备注
1	GB/T6563-M6x45	六角头自攻锁紧螺钉M6×45	SCREW , LOCKED M6x45	3				6	
2	GB/T97.1-6	平垫圈6	WASHER 6	8				1.5	
3	F25-05090001	点火模块组件	C. D. I. UNIT ASSY	1				1080	
4	F25-05090002	点火线束组件	C. D. I. LINE ASSY	1				198	
5	GB/T5783-M6x25	六角螺栓M6×25	BOLT M6x25	3				3	
6	F25-05090005	点火模块减震圈衬管	BUSH , IGNITION	3				9	
7	F25-05090004	点火模块减震圈	BUSH , DAMPING	3				3	
8	F25-05090003	点火模块固定板	BRACKET , IGNITION UNIT	1				58.5	
9	F25-05120000	高压包组件	HIGH PRESSURE ASSY	1				444	
10	GB/T5783-M6x30	六角螺栓M6x30	BOLT M6x30	1				3	
11	F25-05000016	尼龙管夹	CLAMP , NYLON	1				4.5	
12	DPR6EA-9 NGK	火花塞	SPARKPLUG	2				66	
13	F15-07010103	机油压力传感器	OIL PRESSURE SENSOR	1				42	
14	F15-07010101	绝缘护套	JACKET , INSJULATION	1				6	
15	F15-07010102	导线组件	LEAD WIRE ASSY	1				9	
16	F25-05010200	温控器组件	TEMPERATURE CONTROLLER ASS'Y	1					
17	F25-05010201	温控器	TEMPERATURE CONTROLLER	1					
18	F25-05010202	温控器护套	BUSH , TEMPERATURE CONTROLLER	1					
19	F25-05010203	温控器固定板	PLATE , TEMPERATURE CONTROLLER	1					
20	HT-25×60	尼龙扎带	BAND NYLON	1					
21	GB/T5783-M6x12	六角螺栓 M6×12	BOLT M6×12	1					

零部件名称:

进气系统

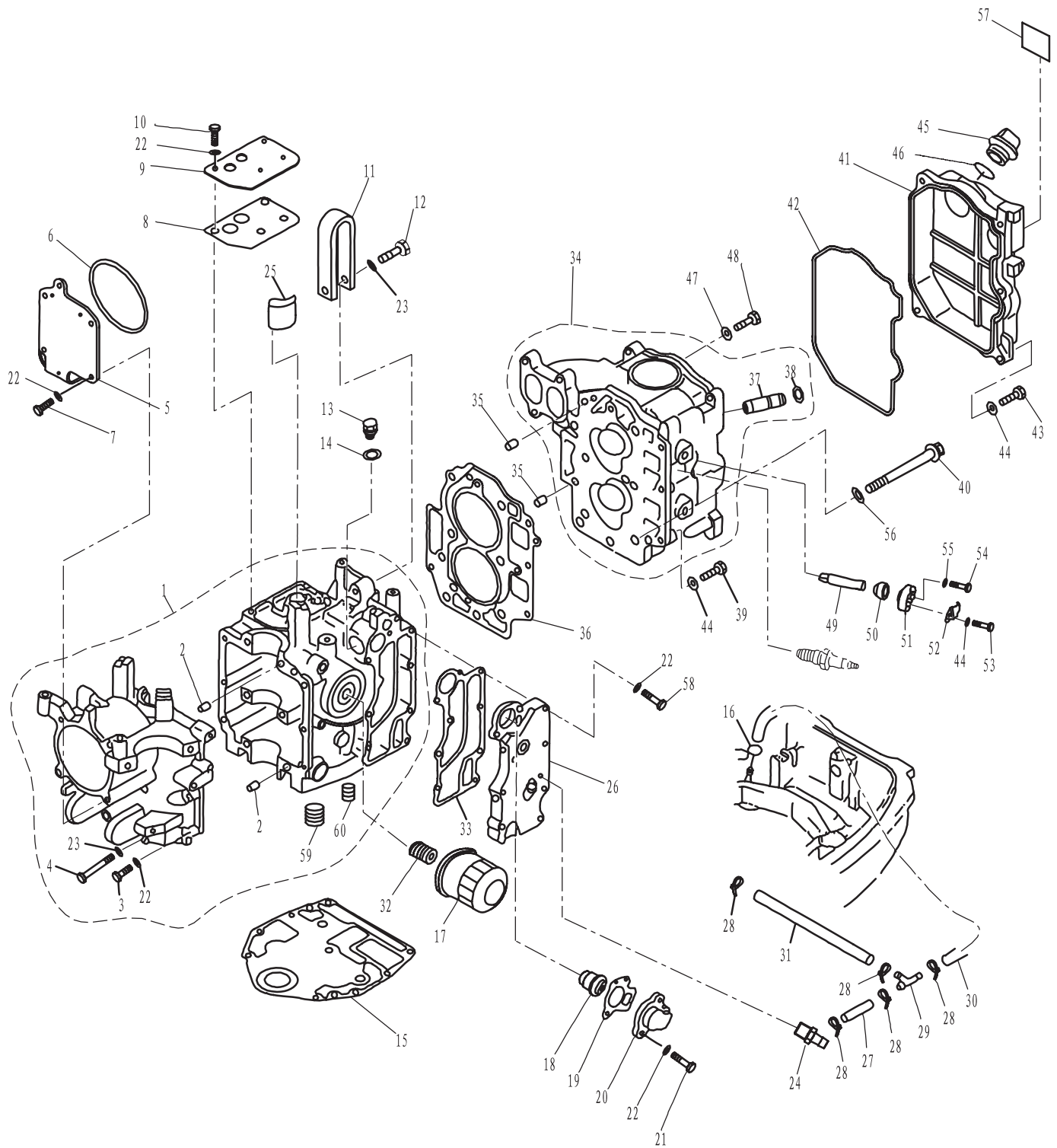
PARTS NAME:

INTAKE



零部件名称: 气缸和曲轴箱

PARTS NAME: CYLINDER&CRANKCASE



				F30 零件手册				PAGE 22 OF 37	
				零部件名称:		气缸和曲轴箱			
				PARTS NAME:		CYLINDER&CRANKCASE			
SN. 参照号码	PART NO. 零件编号	DESCRIPTION 零件名称 (中文)	DESCRIPTION 零件名称 (英文)	QTY 数量				PC 售价	REMARKS 备注
1	F25-05010000	机体机座组件	CRANKCASE ASSY	1				3450	
2	F25-00000014	定位销 φ 8x12	PIN, DOWEL	2				6	
3	GB/T5782-M6x35	六角螺栓M6X35	BOLT, HEXAGON M6x35	6				6	
4	GB/T5782-M8x80	六角螺栓M8X80	BOLT, HEXAGON M8x80	6				13.5	
5	F25-05000007	平衡缸盖板	CRANKCASE	1				114	
6	GB/T3452.1-97.5x1.8	0型圈 97.5x1.8	SEAL 97.5x1.8	1				7.5	
7	GB/T5783-M6x20	六角螺栓M6X20	BOLT, HEXAGON M6x20	4				3	
8	F25-05010108	呼吸器橡胶密封垫	GASKET, BREATHER COVER	1				7.5	
9	F25-05010109	呼吸器盖板	COVER, BREATHER	1				18	
10	GB/T5783-M6x20	六角螺栓M6X20	BOLT, HEXAGON M6x20	4				3	
11	F25-05010106	发动机悬挂钩	HANGER, ENGINE	1				22.5	
12	GB/T5782-M8x35	六角螺栓 M8X35	BOLT HEXAGON M8x35	1				6	
13	F15-04000002	放油螺栓	BOLT, OIL DRAIN	1				21	
14	F15-04000003	放油螺栓垫片	WASHER	1				6	
15	F25-00000013	发动机密封垫	GASKET, ENGINE	1				190.5	
16	F4-04000030	油管夹簧B	SPRING, FUEL PIPE"B"	1				3	
17	F15-07010023	机油滤清器	OIL CLEANER	1				78	
18	F4-04000036	节温器	THERMOSTAT	1				96	
19	F15-07010022	节温器垫	GASKET, THERMOSTAT	1				9	
20	F15-07010021	节温器盖板	COVER, THERMOSTAT	1				25.5	
21	GB/T5783-M6x25	六角螺栓M6X25	BOLT M6x25	2				3	
22	GB/T97.1-6	平垫圈6	WASHER 6	17				1.5	
23	GB/T97.1-8	平垫圈8	WASHER 8	7				1.5	
24	F25-05010113	出水嘴接头	NIPPLE, HOSE	1				25.5	
25	F25-05010107	呼吸器滤网	CLEANER	1				15	
26	F25-05010112	排气盖板	OUTER COVER, EXHAUST	1				105	
27	F25-03000008	水管A	HOSE	1				15	
28	HT-2.5x60	尼龙扎带	CLAMP	5				1.5	
29	F15-05000011	三通	THREE-WAY PIPE	1				6	
30	F25-03000011	水管C	HOSE	1				24	
31	F25-03000009	水管B	HOSE	1				22.5	
32	F15-07010003	机滤螺柱	BOLT, UNION	1				30	
33	F25-05010111	排气盖板密封垫	GASKET, EXHAUST OUTER COVER	1				45	
34	F25-05050100	气缸头组件	CYLINDER HEAD ASSY	1				2124	
35	F25-00000014	定位销 φ 8x12	PIN, DOWEL	2				6	
36	F25-05040000	气缸垫组件	GASKET, CYLINDER HEAD	1				210	
37	F25-05050104	气门导管	VALVE GUIDE BUSH	4					
38	F15-07040105	气门导管卡簧	CIRCLIP, GUIDE BUSH	4				1.5	
39	GB/T5783-M6x25	六角头螺栓M6X25	BOLT, HEXAGON M6x25	3				3	
40	F25-05000002	六角头凸缘螺栓M9X95	BOLT, FLANGE	6				18	
41	F25-05000005	气缸头罩	COVER, CYLINDER HEAD	1				120	
42	F25-05000004	气缸头罩密封圈	SEAL, CYLINDER COVER	1				39	
43	GB/T5783-M6x20	六角头螺栓M6X20	BOLT, HEXAGON M6x20	5				3	

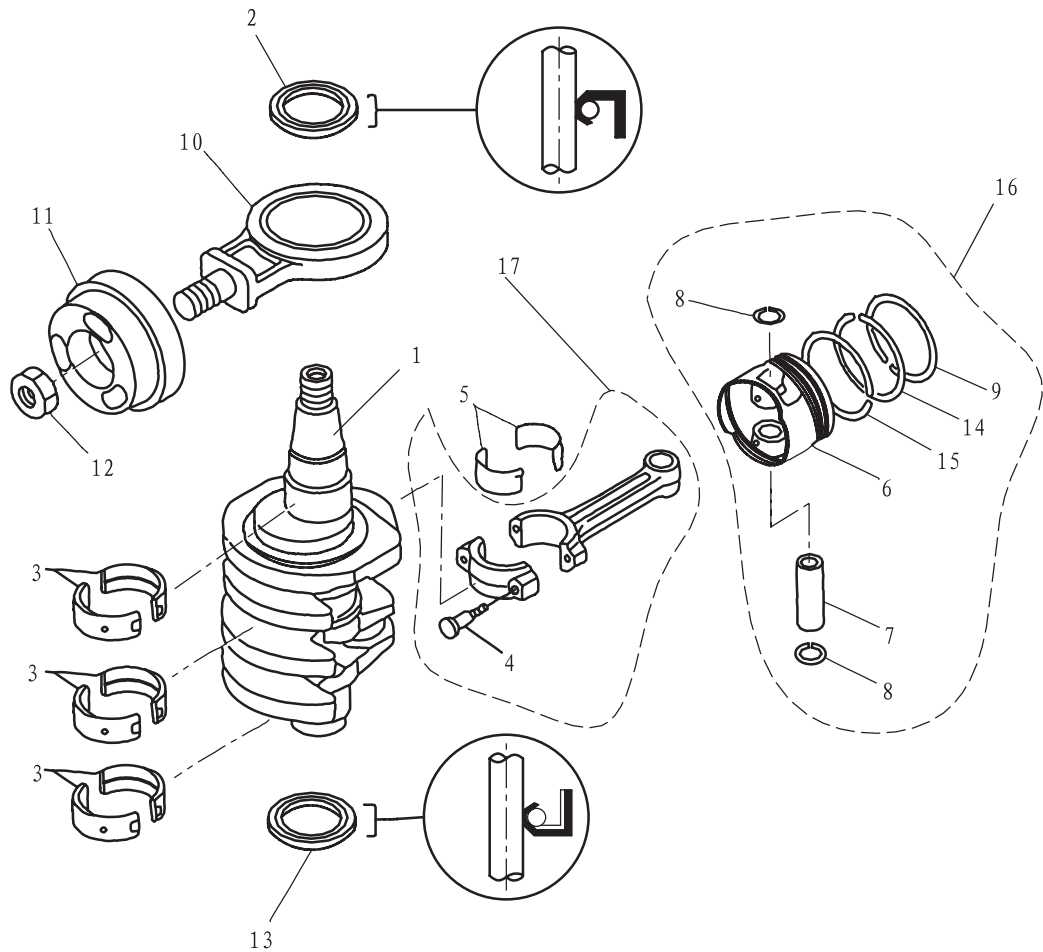
[illegible]

零部件名称:

曲轴和活塞

PARTS NAME:

CRANKSHAFT&PISTON



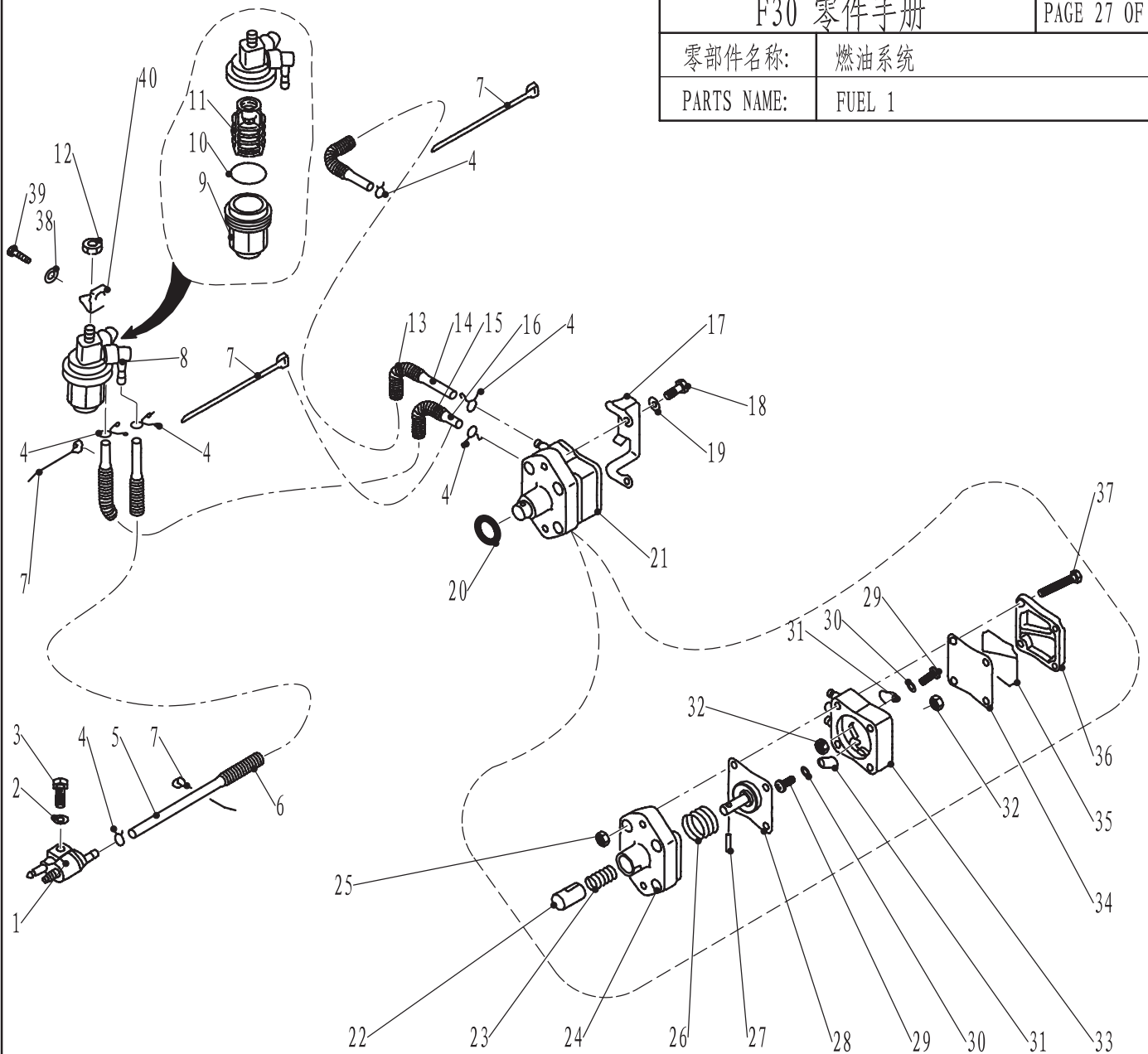
SN. 参照号码	PART NO. 零件编号	DESCRIPTION 零件名称 (中文)	DESCRIPTION 零件名称 (英文)	QTY 数量				PC 售价	REMARKS 备注
1	F25-05020001	曲轴	CRANK SHAFT	1				2400	
2	F25-05020002	曲轴油封 B	OIL SEAL B	1				57	
3	F25-05010302-1	曲轴轴瓦	MAIN BEARING	6				27/片	UR: BROWN
	F25-05010302-2	曲轴轴瓦	MAIN BEARING	6					
4	F25-05020204	连杆螺栓	BOLT, CONNECTING ROD	2				13.5	
5	F25-05020203-1	连杆轴瓦	PLANE BEARING, CONNECTING ROD	2				31.5/片	UR: BLACK
	F25-05020203-2	连杆轴瓦	PLANE BEARING, CONNECTING ROD	2					
6	F25-05020101	活塞	PISTON	2				120	
7	F25-05020105	活塞销	PIN, PISTON	2				27	
8	F25-05020106	活塞销挡圈	CIRCLIP	4				3	
9	F25-05020102	活塞环I	PISTON RING I	2					
10	F25-05020310	平衡缸连杆组件	CON-ROD ASSY, BALANCE	1				270	
11	F25-05020301	平衡缸活塞	PISTON, BALANCE	1				246	
12	F25-05000026	飞轮螺母	NUT	1				22.5	
13	F25-05020002	曲轴油封 A	OIL SEAL A	1				54	
14	F25-05020103	活塞环 II	PISTON RING II	2				112.5/套	
15	F25-05020104	组合油环	COMBINA OIL RING	2					
16	F25-05020100	活塞组件	PISTON ASSY	2				255	
17	F25-05020200	连杆组件	ROD, CONNECTING	2				234	

零部件名称:

燃油系统

PARTS NAME:

FUEL 1

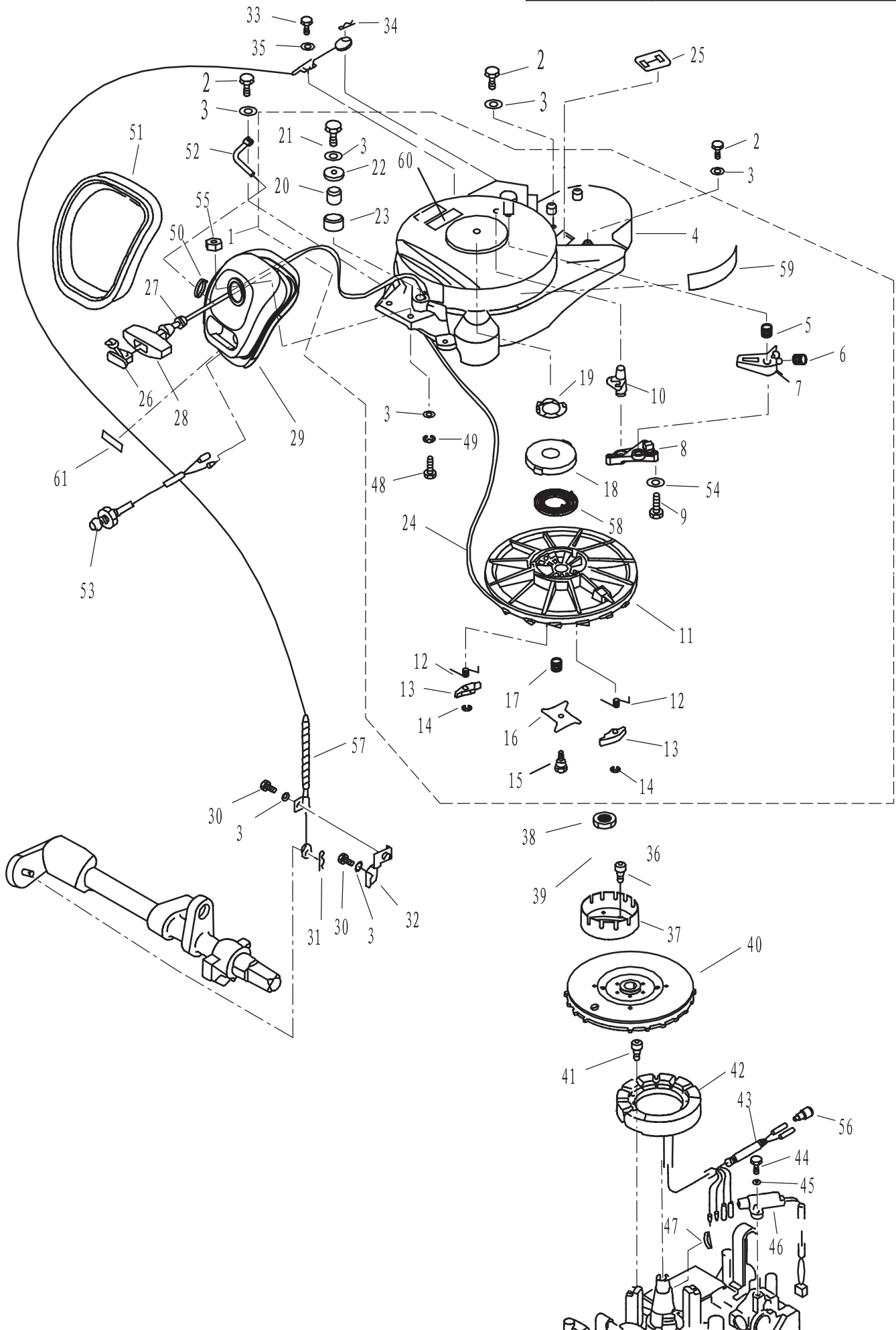


SN. 参照号码	PART NO. 零件编号	DESCRIPTION 零件名称 (中文)	DESCRIPTION 零件名称 (英文)	QTY 数量				PC 售价	REMARKS 备注
1	F4-05000200	燃油接头组件	FUEL PIPE TIE-IN ASSY	1				84	
2	GB/T97.1-6	平垫圈6	WASHER 6	1				1.5	
3	GB/T5783-M6x25	六角螺栓M6 × 25	BOLT M6x25	1				3	
4	F4-04000030	油管夹簧B	SPRING, FUEL PIPE "B"	5				3	
5	F25-03000012	燃油管A	PIPE , FUEL "A"	1				27	Φ10xΦ5x550
6	F25-03000004	波纹护套	PIPE, WAVE	1				12	Φ12x120
7	HT-2.5 × 60	尼龙扎带	CLAMP	6				3	
8	F15-07080000	滤油杯组件	FILTER ASSY	1				58.5	
9	F15-07080002	滤杯	CUP , FILTER	1				9	
10	GB/T3452.1-32.5x1.8	滤杯密封圈 φ 32.5 × 1.8	WASHER , CUP FILTER φ 32.5x1.8	1				3	
11	F15-07080001	滤网架	ELEMENT, FILTER	1				6	
12	GB/T6170-M8	六角螺母M8	NUT M8	1				1.5	
13	F25-05000029	波纹管	PIPE, WAVE	1				16.5	Φ12x300
14	F25-05000012	燃油管	PIPE, FUEL	1				24	Φ10xΦ5x350
15	F25-05000033	波纹管	PIPE, WAVE	1				12	Φ12x120

[illegible]

零部件名称: 起动机

PARTS NAME: STARTER



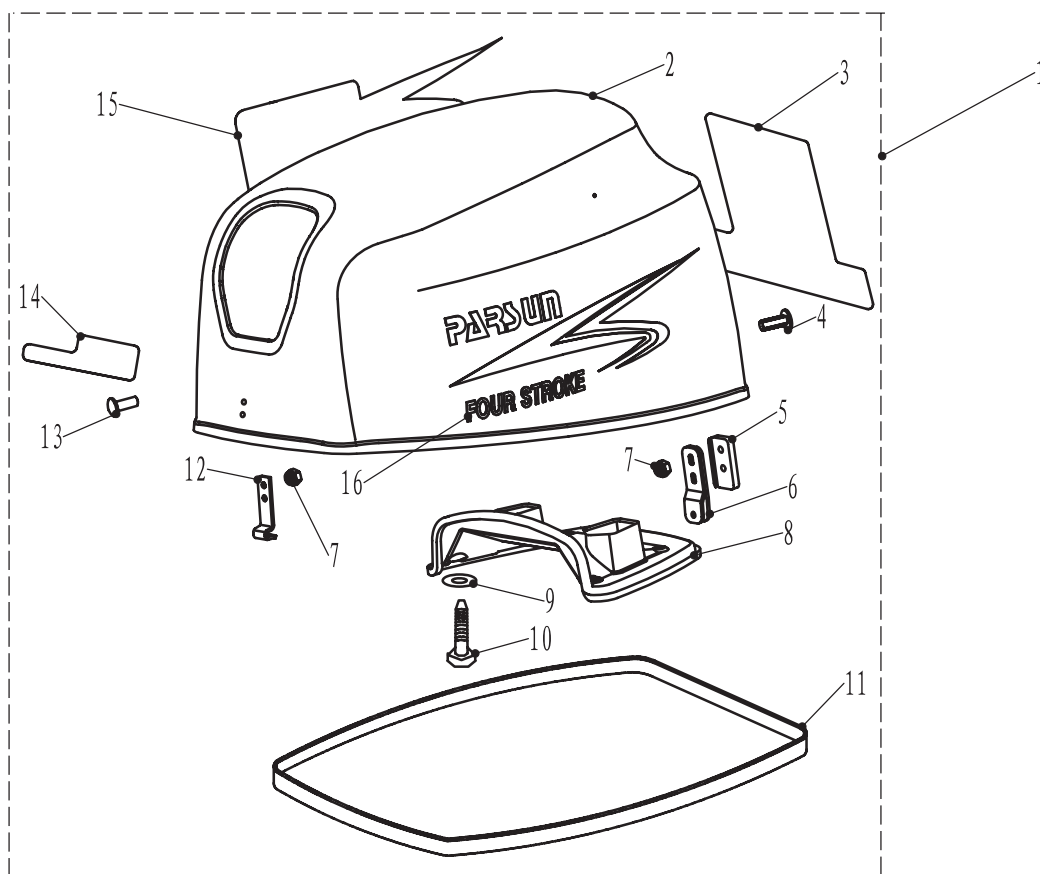
				F30 零件手册				PAGE300F37
				零部件名称:		起动机		
				PARTS NAME:		STARTER		
SN. 参照号码	PART NO. 零件编号	DESCRIPTION 零件名称 (中文)	DESCRIPTION 零件名称 (英文)	QTY 数量			PC 售价	REMARKS 备注
1	F25-05160000	起动机组件	STARTER ASSY	1			1140	
2	GB/T5783-M6x25	六角螺栓M6x25	BOLT M6x25	4			3	
3	GB/T97. 1-6	平垫圈6	WASHER, PLATE 6	9			1.5	
4	F25-05160100	起动机外壳组件	CASE, STARTER	1			420	
5	F25-05160003	制动器扭簧	SPRING, ARRESTER	1			4.5	
6	F25-05160005	卡瓣弹簧	SPRING, TENSION	1			3	
7	F25-05160001	制动器	ARRESTER	1			7.5	
8	F25-05160006	制动器固定盖板	ARRESTER, CHANGELESS	1			9	
9	GB/T5285-FST4. 8x26	六角头自攻螺钉ST4. 8x26 (F型)	SCREW, TAPPING ST4. 8x26	3			1.5	
10	F25-05160004	制动器卡瓣	PAWL, DRIVE	1			6	
11	F25-05160301	起动轮	WHEEL, START-UP	1			210	
12	F25-05160304	起动卡瓣扭簧	PAWL, DRIVE SPRING	2			4.5	
13	F25-05160305	起动卡瓣	PAWL, DRIVE	2			27	
14	GB/T896-6	开口档圈6	CIRCLIP 6	2			1.5	
15	F25-05160018	压板螺钉	PLATE, DRIVE BOLT	1			30	
16	F25-05160017	起动压板	PLATE, DRIVE	1			19.5	
17	F25-05160016	起动压板弹簧	SPRING, DRIVE PLATE	1			3	
18	F25-05160014	涡形弹簧座	SEAT, SPRING	1			25.5	
19	F25-05160013	涡形弹簧座弹性垫片	CUSHION, SPRING, SEAT	1			6	
20	F25-05160009	起动绳滑轮轴	AXES, PUIIEY	1			24	
21	GB/T5783-M6x30	六角螺栓M6x30	BOLT M6x30	1			3	
22	GB/T5287-6	特大垫圈6	WASHER, OUTSIZE 6	1			3	
23	F25-05160008	起动绳滑轮	PUIIEY, STARTLING	1			12	
24	F25-05160019	锦纶编织线 φ 5x1. 68米	START LING	1			18	
25	F25-05160012	橡胶护盖	JACKET, RUBBER	1			6	
26	F4-04130102	起动手柄盖	COVER	1			4.5	
27	F25-05160021	手柄减震圈	DAMPING	1			3	
28	F25-05160501	起动手柄	HANDLE, STARTER	1			18	
29	F25-05160401	起动架	FRAME, STARTER	1			6	
30	GB/T5783-M6x10	六角螺栓M6x10	BOLT M6x10	2			1.5	
31	F15-00000012	夹簧 φ 1. 8	SPRING	1			3	
32	F25-05000028	制动器固定板	STAY, CABLE COMP	1			7.5	
33	GB/T5783-M5x12	六角螺栓M5x12	BOLT M5x12	1			1.5	
34	F25-05160002	夹簧 φ 1	SPRING	1			3	
35	GB/T96-5	大垫圈5	BIG WASHER 5	1			1.5	
36	GB/T70. 1-M8x12	内六角螺栓M8x12	BOLT M8x12	3			6	
37	F25-05000027	起动轴套	JUMP START, AXES	1			180	
38	F25-05000026	飞轮螺母	NUT, FLYWHEEL	1			24	
39	F25-05000025	飞轮螺母垫圈	WASHER, FLYWHEEL NUT	1			9	
40	F25-05150000	飞轮组件	FLYWHEEL SAAY	1			762	
41	GB/T70. 1-M5x25	内六角螺栓M5x25	BOLT M5x25	3			1.5	
42	F25-05140000	磁电机线圈组件	STATOR ASSY	1			1176	
43	F25-05000034	波纹管 Φ 8x90	RIPPLE JACKET	1			4.5	

零件名称:

顶罩组件

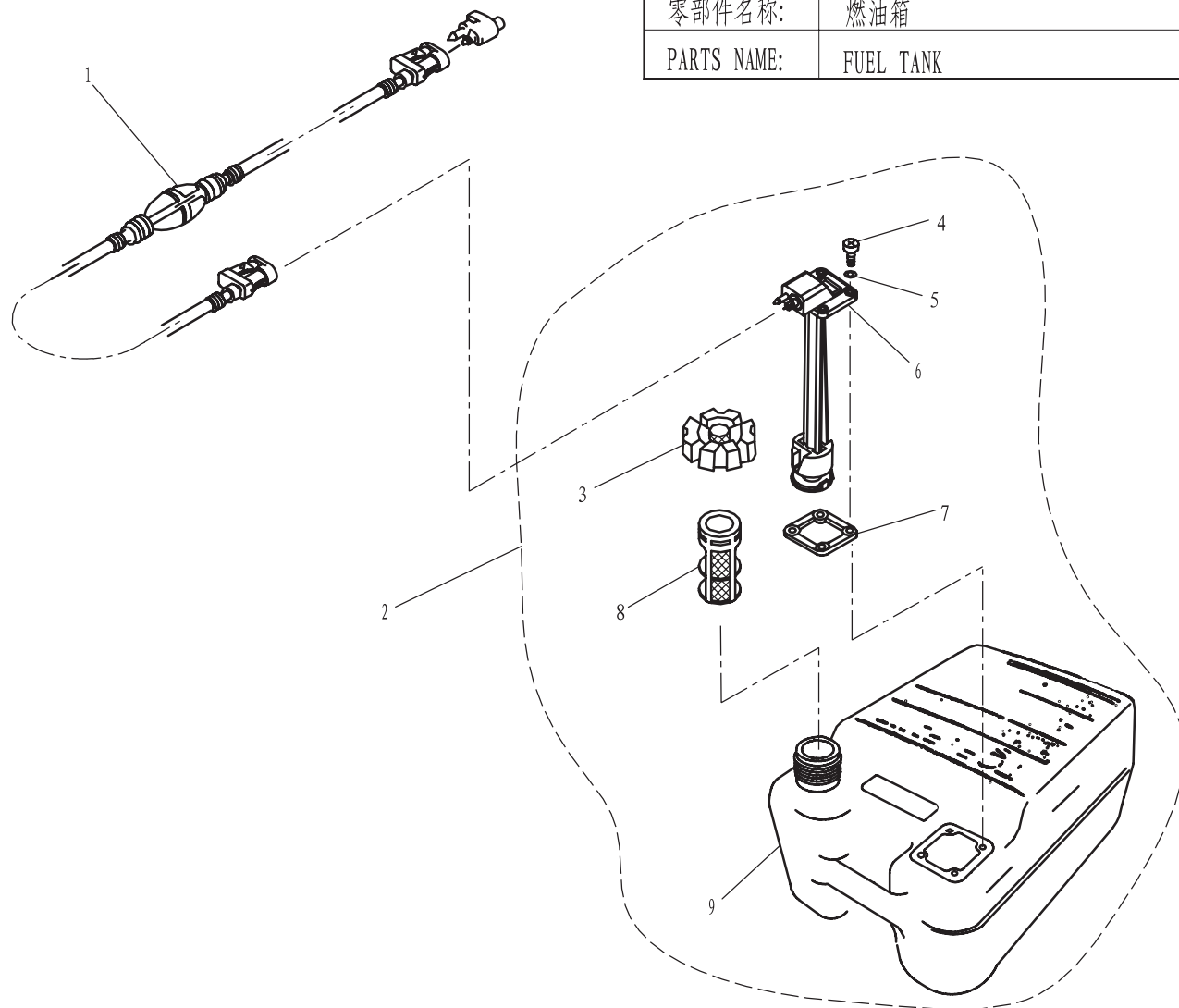
PARTS NAME:

TOP COWLING ASSY

[illegible]

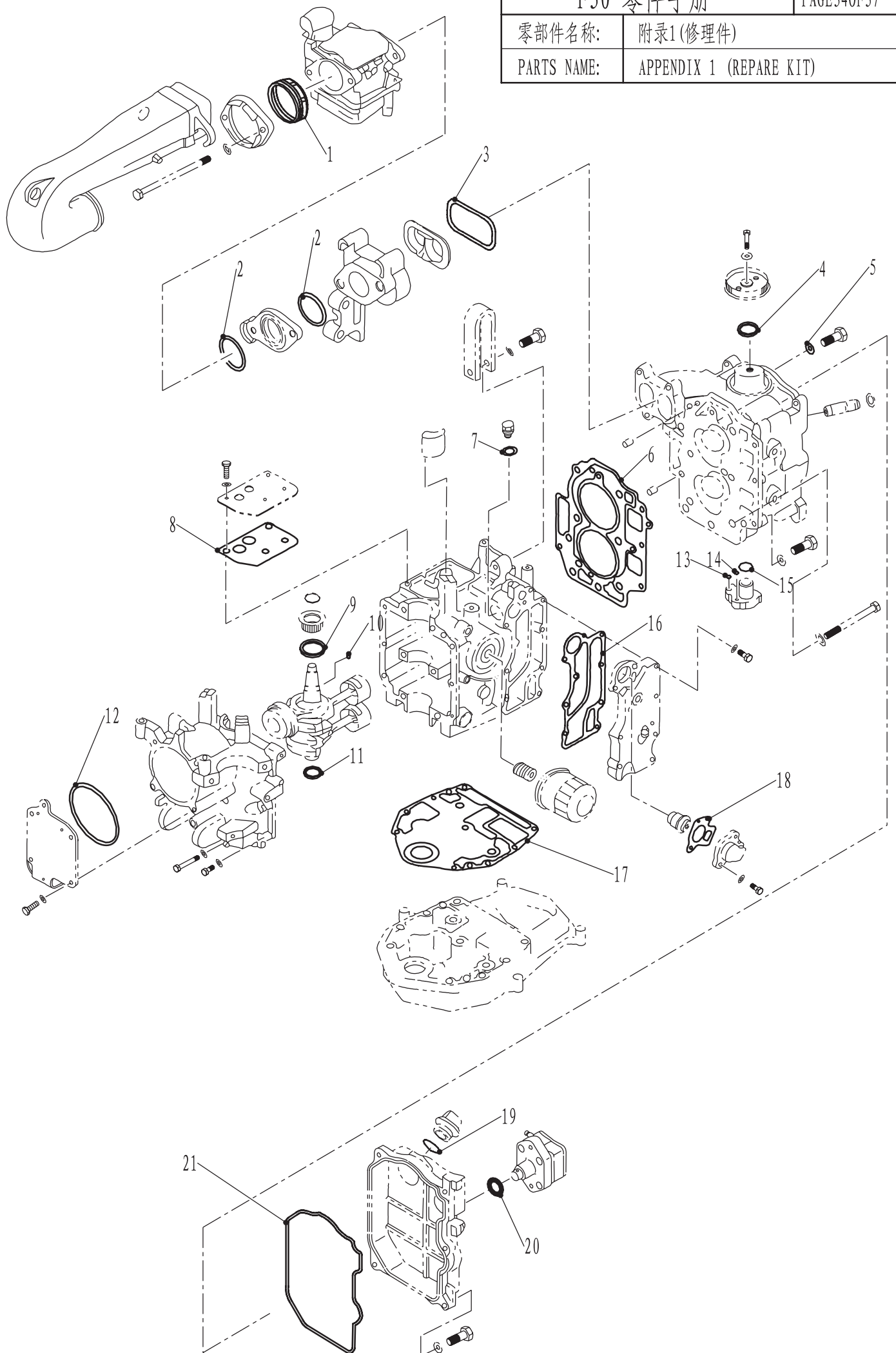
燃油箱

FUEL TANK

[illegible]

零部件名称: 附录1(修理件)

PARTS NAME: APPENDIX 1 (REPAIRE KIT)



[illegible]

零部件名称:

附录2 (修理件)

PARTS NAME:

APPENDIX 2 (REPAIR KIT)

