

零件目录 **2016**

PARTS CATALOGUE

<http://www.parsunchina.com>

PARSUN

SINCE 1968

百胜动力



四冲程/TWO STROKE

F9.8BMS

F9.8BML

苏州百胜动力机器股份有限公司

SUZHOU PARSUN POWER MACHINE CO.,LTD

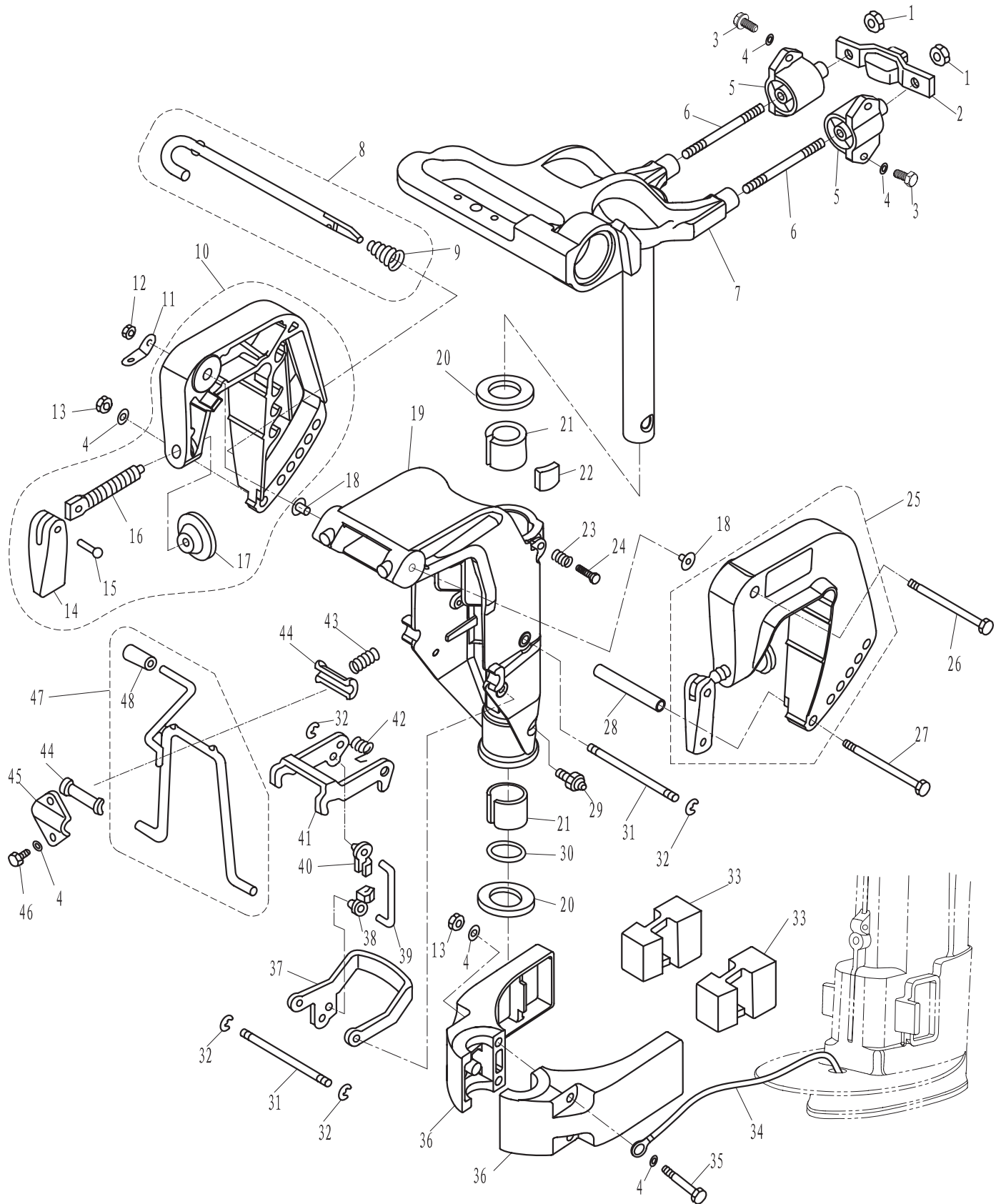
目录

CONTENTS

托架	— — — — —	— 1 ~ 2
BRACKET	— — — — —	— 1 ~ 2
操舵系统	— — — — —	— 3 ~ 4
STEERING	— — — — —	— 3 ~ 4
水上装置壳体	— — — — —	— 5 ~ 6
UPPER CASING	— — — — —	— 5 ~ 6
底罩	— — — — —	— 7 ~ 8
BOTTOM COWLING	— — — — —	— 7 ~ 8
控制系统	— — — — —	— 9 ~ 10
CONTROL SYSTEM	— — — — —	— 9 ~ 10
水下装置壳体&驱动系统	— — — — —	— 11 ~ 13
LOWER CASING & DRIVE	— — — — —	— 11 ~ 13
电气	— — — — —	— 14 ~ 15
ELECTRICAL	— — — — —	— 14 ~ 15
进气系统	— — — — —	— 16
INTAKE	— — — — —	— 16
气缸头	— — — — —	— 17
CYLINDER HEAD	— — — — —	— 17
曲轴&活塞	— — — — —	— 18
CRANKSHAFT & PISTON	— — — — —	— 18
曲轴箱	— — — — —	— 19 ~ 20
CRANKCASE	— — — — —	— 19 ~ 20
阀门	— — — — —	— 21
VALVE	— — — — —	— 21
凸轮轴	— — — — —	— 22
CAMSHAFT	— — — — —	— 22
燃油系统	— — — — —	— 23
FUEL SYSTEM	— — — — —	— 23
起动器	— — — — —	— 24 ~ 25
STARTER	— — — — —	— 24 ~ 25
顶罩组件	— — — — —	— 26 ~ 27
TOP COWLING ASSY	— — — — —	— 26 ~ 27
燃油箱	— — — — —	— 28
FUEL TANK	— — — — —	— 28
气缸头总成(修理件)	— — — — —	— I ~ II
CYLINDER HEAD ASSY (REPARE KIT)	— — — — —	— I ~ II
发动机头总成(修理件)	— — — — —	— III ~ IV
ENGINE ASSY (REPARE KIT)	— — — — —	— III ~ IV
附录1(修理件)	— — — — —	— V ~ VI
APPENDIX 1 (REPARE KIT)	— — — — —	— V ~ VI
附录2(修理件)	— — — — —	— VII ~ VIII
APPENDIX 2 (REPARE KIT)	— — — — —	— VII ~ VIII

零部件名称: 托架

PARTS NAME: BRACKET

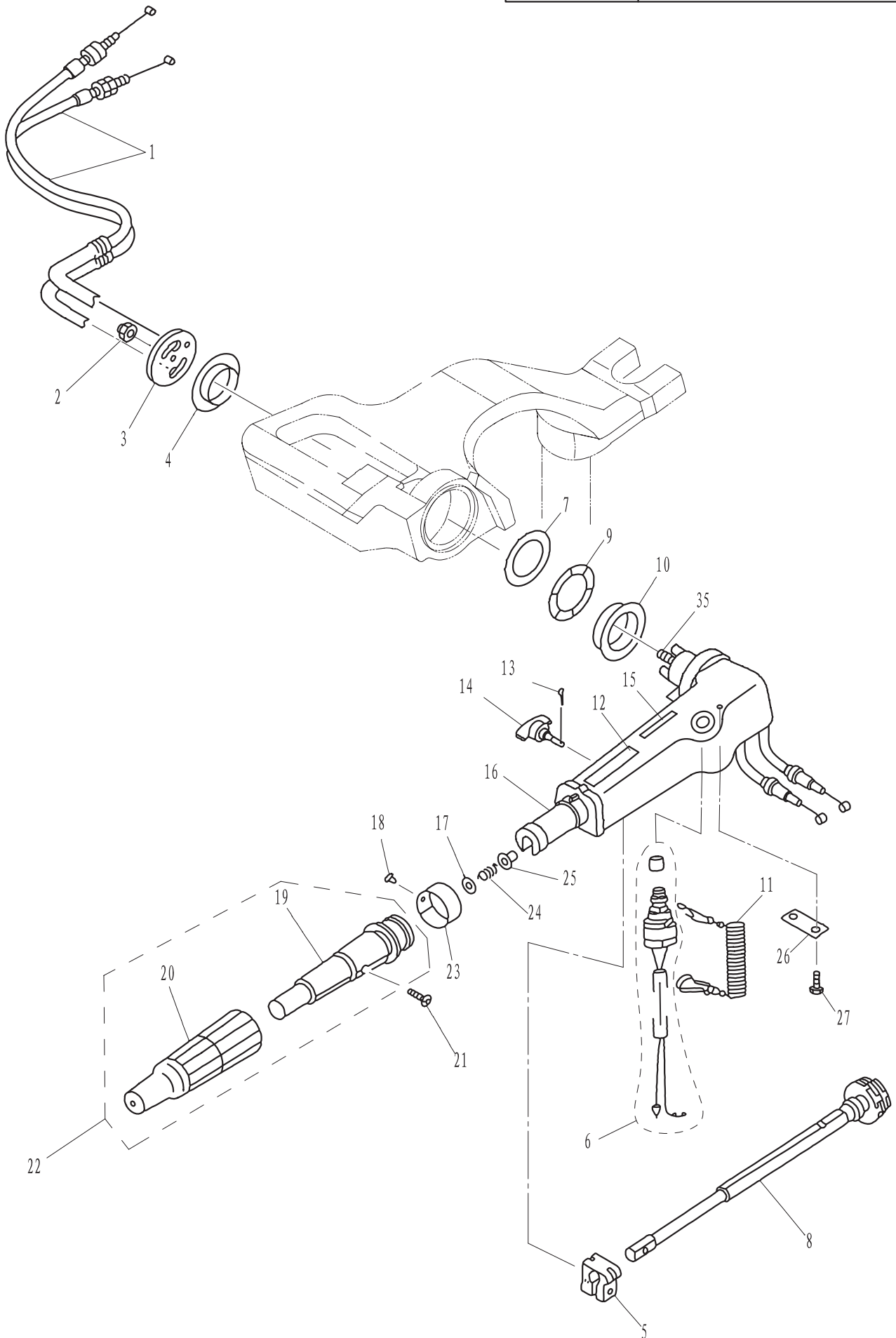


SN. 参照号码	PART NO. 零件编号	DESCRIPTION 零件名称 (中文)	DESCRIPTION 零件名称 (英文)	QTY 数量				PC 售价	REMARKS 备注
1	GB/T889.1-M8	I 型非金属嵌件六角锁紧螺母 M8	NUT M8	2				3	
2	F8-00000100	前减震块	ABSORBER (FRONT)	1				43.5	
3	GB/T5783-M6X20	六角螺栓 M6X20	BOLT M6x20	4				1.5	
4	GB/T97.1-6	平垫圈 6	WASHER 6	11				1.5	
5	F8-02000100	减震器组件	ABSORBER ASSY	2				69	

				F9.8C零件手册				PAGE 2 OF 28
				零部件名称:		托架		
				PARTS NAME:		BRACKET		
SN. 参照号码	PART NO. 零件编号	DESCRIPTION 零件名称(中文)	DESCRIPTION 零件名称(英文)	QTY 数量			PC 售价	REMARKS 备注
6	F8-01000003	双头螺栓 M8X65	DICEPHALOUS BOLT M8X65	2			18	
7	F8-01020000	操舵托架组件	STEER BRACKET ASSY	1			763.5	
8	F8-01010200	角度调整杆组件	THRUST ROD ASSY	1			79.5	
9	F4-01050002	锥形弹簧	CONICAL SPRING	1			6	
10	F4-01020000	夹紧托架(左)组件	BRACKET ASSY (LEFT)	1			216	
11	F4-01000002	双孔固定板	PLATE, TWO HOLE	1			12	
12	GB/T889.1-M8	非金属嵌件六角螺母 M8	NUT M8	1			3	
13	GB/T6170-M6	六角螺母 M6	NUT M6	3			1.5	
14	F4-01010004	艀板夹紧手柄	CLAMP HANDLE, STERN	2			10.5	
15	F4-01010005	艀板夹紧手柄铆钉	RIVET, CLAMP HANDLE	2			3	
16	F4-01010002	艀板夹紧螺杆	CLAMP SCREW	2			24	
17	F4-01010003	艀板夹紧圆盘	CLAMP PAD	2			7.5	
18	F4-01000003	尼龙垫圈	WASHER, NYLON	2			3	
19	F8-01010101	旋转支架	ROTARY BRACKET	1			648	
20	F8-01000001	旋转支架垫圈	WASHER, ROTARY BRACKET	2			7.5	
21	F8-01000002	旋转支架衬套	BUSHING, ROTARY BRACKET	2			9	
22	F8-01000100	锁紧块组件	LOCKING BLOCK ASSY	1			18	
23	F8-01010102	锁紧弹簧	SPRING, LOCKING	1			9	
24	GB/T5783-M8X30	六角螺栓 M8X30	BOLT M8X30	1			6	
25	F4-01010000	夹紧托架(右)组件	BRACKET ASSY (RIGHT)	1			216	
26	GB/T5782-M8X140	六角螺栓 M8X140	BOLT M8X140	1			30	
27	GB/T5782-M6X130	六角螺栓 M6X130	BOLT M6X130	1			19.5	
28	F8-01010001	螺栓垫管	TUBE, BOLT	1			36	
29	JB/T7940.1-M6	直通式压注油杯 M6	OILER M6	1			18	
30	JASO F404 35-022	O型圈 $\phi 22.4 \times \phi 3.5$	O-RING $\phi 22.4 \times \phi 3.5$	1			4.5	
31	F8-01010108	旋转支架销轴	SHAFT, ROTARY BRACKET	2			13.5	
32	GB/T896-5	开口挡圈 5	CIRCLIP 5	4			1.5	
33	F8-00000002	减震块	ABSORBER	2			15	
34	T15-02010100	接地钢索 B	TIGHTWIRE B	1			33	
35	GB/T5782-M6X75	六角螺栓 M6X75	BOLT M6X75	2			6	
36	F8-00000001	减震块外壳	SHELL, ABSORBER	2			94.5	
37	F8-01010106	旋转支架外架	OUTER FRAME, ROTARY BRACKET	1			51	
38	F8-01010112	外架连杆接头	TIE-IN, CONNCTING ROD	1			4.5	
39	F8-01010110	内架连杆	CONNCTING ROD, INNER FRAME	1			7.5	
40	F8-01010111	内架连杆接头	TIE-IN, CONNCTING ROD	1			4.5	
41	F8-01010107	旋转支架内架	INNER FRAME, ROTARY BRACKET	1			45	
42	F8-01010109	内架扭簧	SPRING, WREST	1			4.5	
43	F8-01010104	支撑架弹簧	SPRING, SUPPORT	1			4.5	
44	F8-01010103	支撑架尼龙衬套	BUSHING	2			4.5	
45	F8-01010105	支撑架压板	PRESS PLATE	1			10.5	
46	GB/T5783-M6X12	六角螺栓 M6X12	BOLT M6X12	2			1.5	
47	F8-01010300	角度定位支撑架组件	SUPPORT ASSY	1			115.5	
48	F4-01030103	手柄套	HANDLE COVER	1			3	

零部件名称: 操舵系统

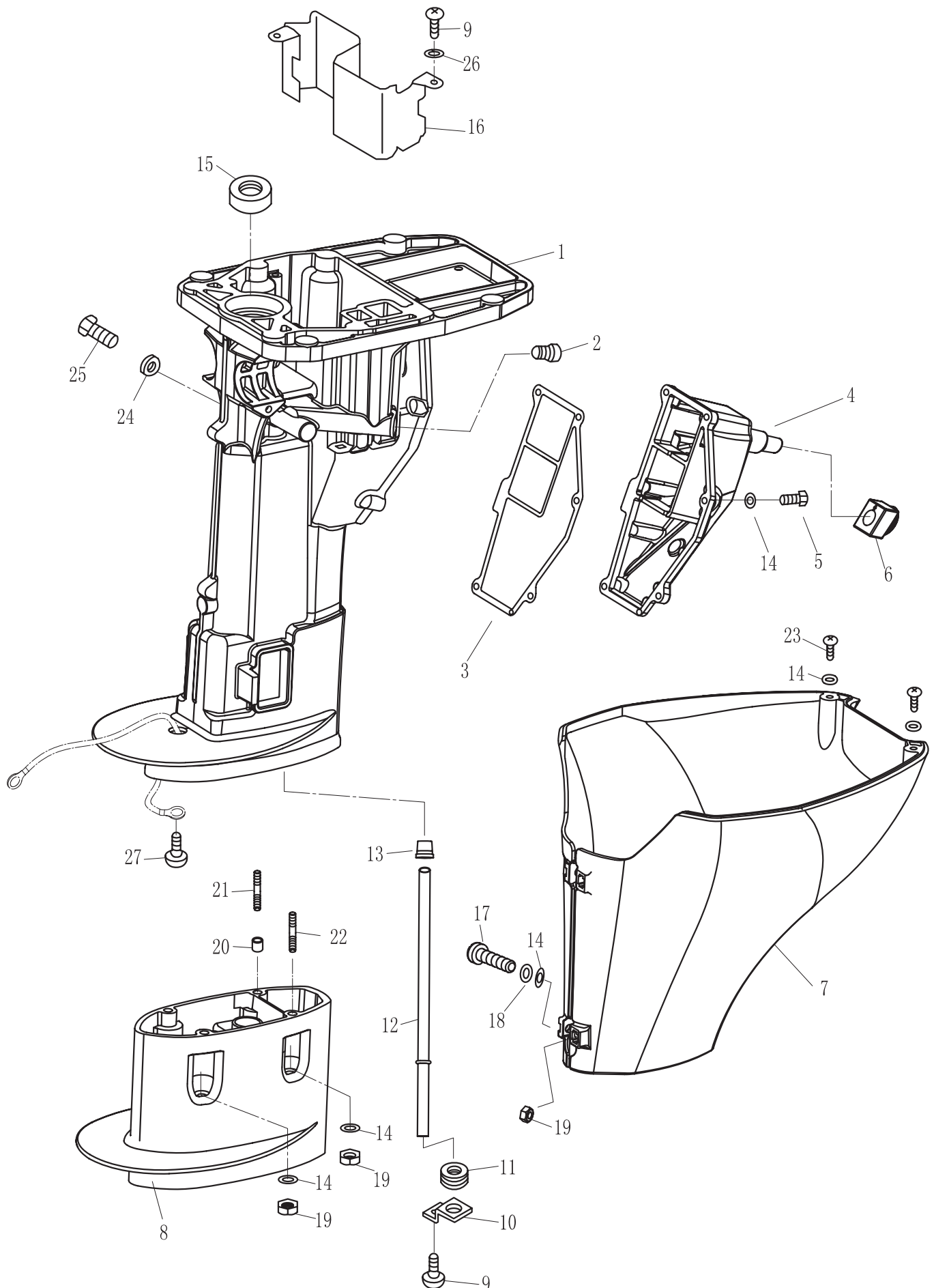
PARTS NAME: STEERING



[illegible]

零部件名称: 水上装置壳体

PARTS NAME: UPPER CASING



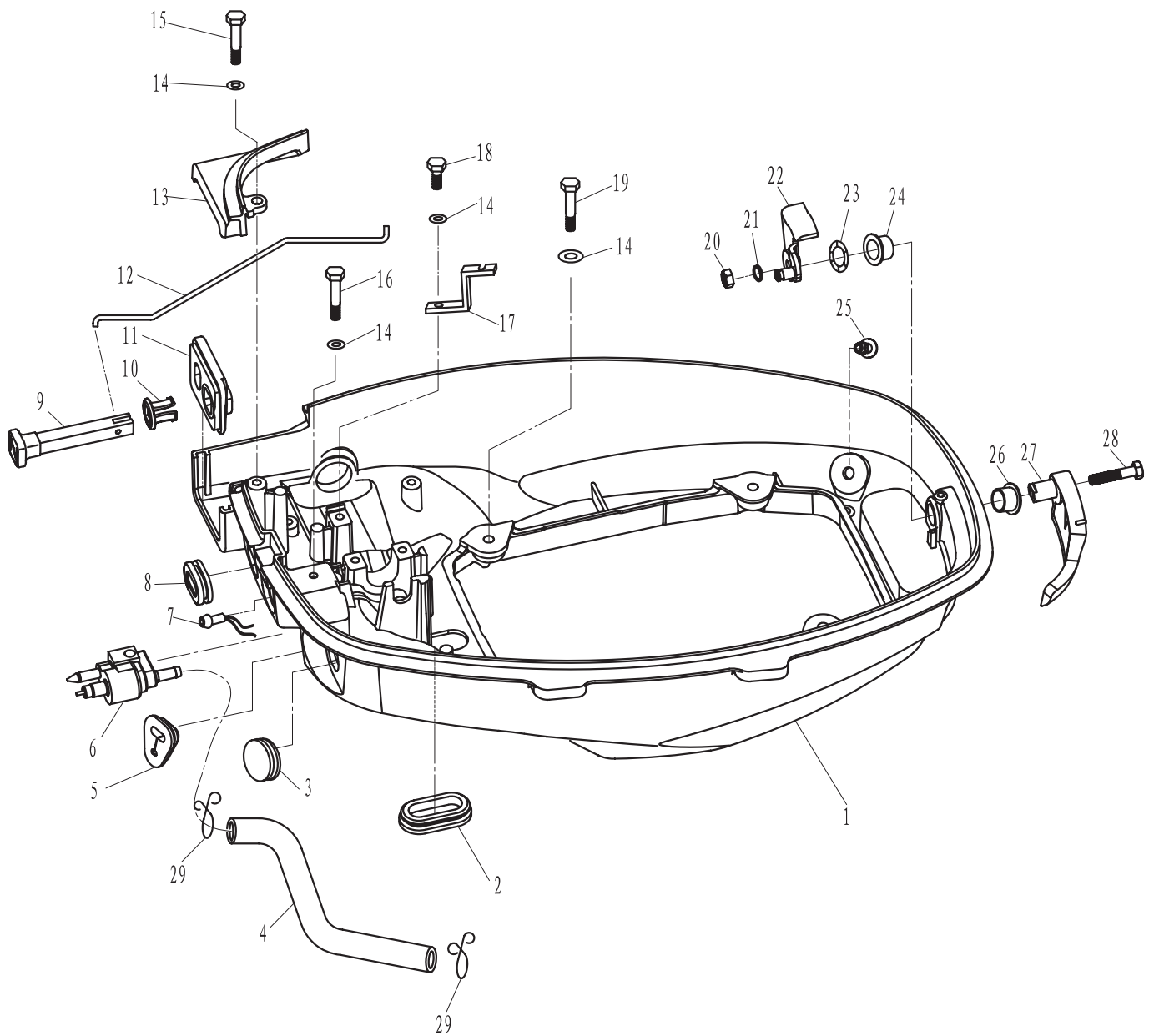
[illegible]

零部件名称:

底罩

PARTS NAME:

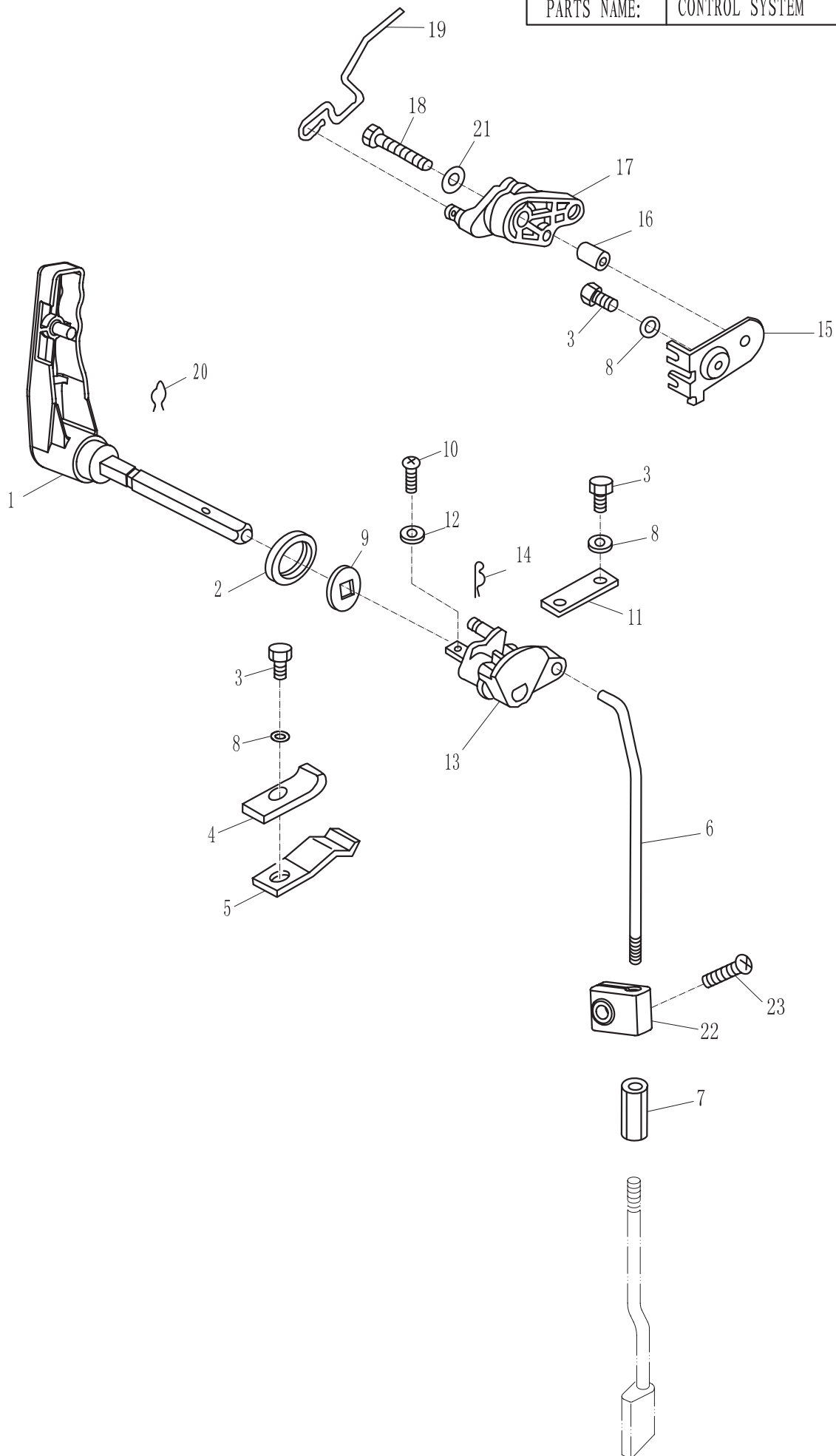
BOTTOM COWLING



[illegible]

零部件名称: 控制系统

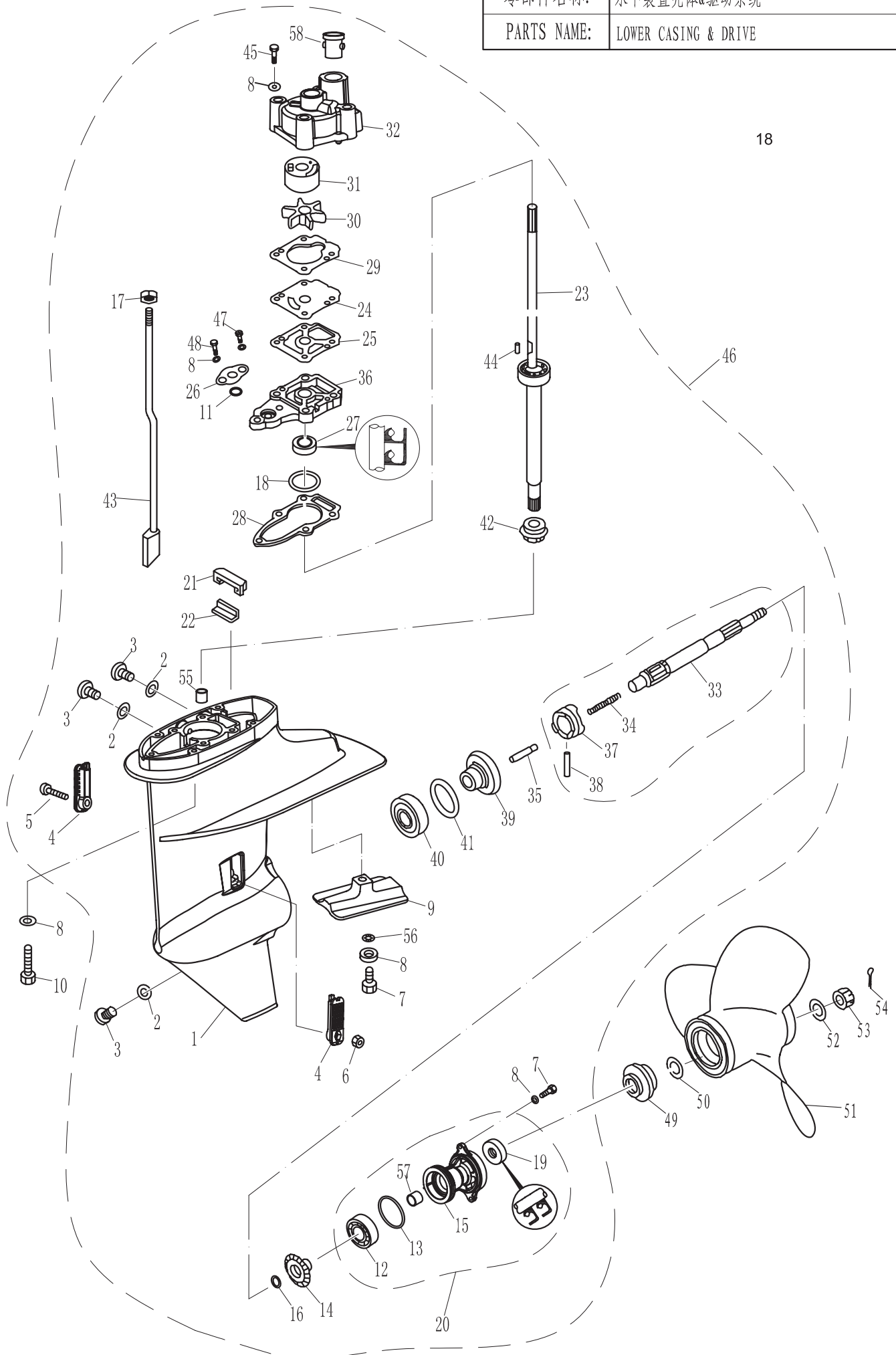
PARTS NAME: CONTROL SYSTEM



[illegible]

零部件名称: 水下装置壳体&驱动系统

PARTS NAME: LOWER CASING & DRIVE

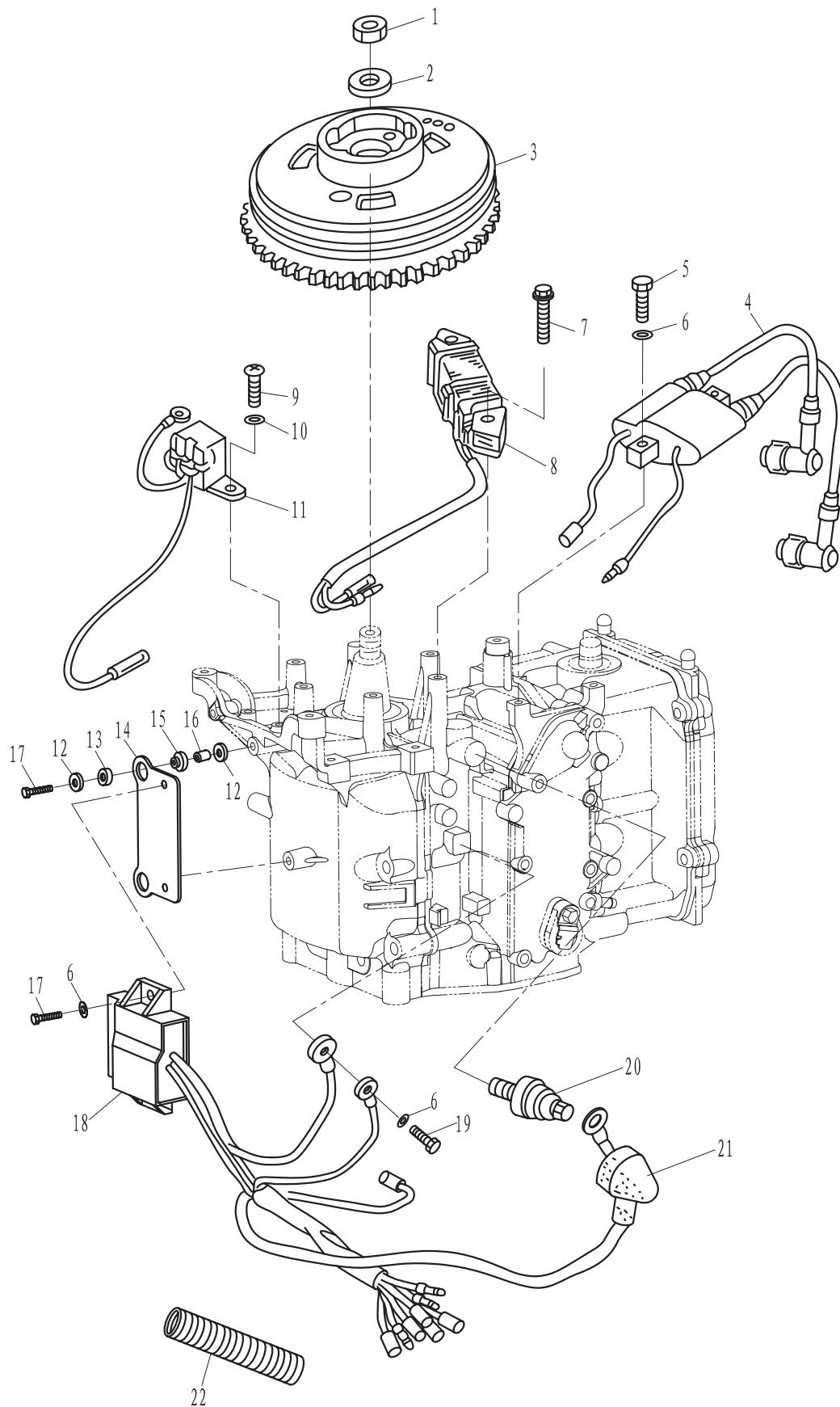


				F9.8C零件手册				PAGE 12 OF 28
				零部件名称:		水下装置壳体&驱动系统		
				PARTS NAME:		LOWER CASING & DRIVE		
SN. 参照号码	PART NO. 零件编号	DESCRIPTION 零件名称(中文)	DESCRIPTION 零件名称(英文)	QTY 数量			PC 售价	REMARKS 备注
1	F8-04000001	水下装置壳体	LOWER CASING	1			1134	
2	F4-03000024	注油孔螺栓密封垫	GASKET	3			3	
3	F4-03000023	注油孔螺栓	PLUG, OIL HOSE	3			12	
4	F8-04000017	进水口	WATER INLET	2			6	
5	GB/T823-M4X25	十字槽小盘头螺钉 M4X25	SCREW M4X25	1			1.5	
6	GB/T889. 1-M4	六角锁紧螺母 M4	NUT, HEXAGON M4	1			1.5	
7	GB/T5783-M6X25	六角螺栓 M6X25	BOLT, HEXAGON M6X25	3			3	
8	GB/T97. 1-6	平垫圈6	WASHER 6	11			1.5	
9	F8-04000018	水下阳极	ANODE	1			102	
10	GB/T5783-M6X35	六角螺栓 M6X35	BOLT, HEXAGON M6X35	4			3	
11	F2. 6-03000009	O形密封圈	O-RING	1			4.5	
12	GB/T276-6004	深沟球轴承6004	BEARING 6004	1			24	
13	F8-04040002	水下壳盖O形圈	O-RING	1			4.5	
14	F8-04000014	倒档齿轮	GEAR, REVERSE	1			279	
15	F8-04040001	水下壳体盖	COVER, LOWER CASING	1			138	
16	F8-04000012	倒档齿轮垫圈	WASHER	1			4.5	
17	GB/T6170-M5	六角螺母 M5	NUT, HEXAGON M5	1			1.5	
18	F8-04000004-1	驱动轴填隙片 0.10mm	SHIM 0.10mm				4.5	
	F8-04000004-2	驱动轴填隙片 0.15mm	SHIM 0.15mm				4.5	
	F8-04000004-3	驱动轴填隙片 0.20mm	SHIM 0.20mm				4.5	
19	F8-04040004	螺旋桨轴油封15X28X10	OIL SEAL	1			27	
20	F8-04040000	水下装置壳体盖组件	COVER ASSY, LOWER CASING	1			216	
21	F8-04000016	水封密封垫	GASKET, WATER SEAL	1			4.5	
22	F8-04000015	水封	WATER SEAL	1			6	
23	F8-04020001 (L)	驱动轴组件 (L)	DRIVE SHAFT ASSY (L)	1			1080	L
	F8-04020001 (S)	驱动轴组件 (S)	DRIVE SHAFT ASSY (S)	1			1053	S
24	F8-04000007	外挡板	OUTER PLATE	1			87	
25	F8-04000006	外挡板下密封垫	GASKET, OUTER PLATE	1			12	
26	F8-04000011	O形圈挡板	PLATE, O-RING	1			7.5	
27	F8-04000101	水泵座油封 12.1X24X8	OIL SEAL	1			24	
28	F8-04000005	水泵座密封垫	GASKET, WATER PUMP SEAT	1			12	
29	F8-04000008	外挡板上密封垫	GASKET, OUTER PLATE	1			12	
30	F8-04000200	水泵叶轮	IMPELLER	1			39	
31	F8-04000010	水泵内壳	INNER SHELL, WATER PUMP	1			99	
32	F8-04000009	水泵壳体	WATER PUMP	1			27	
33	F8-04000301	螺旋桨轴	SHAFT, PROPELLER	1			526.5	
34	F8-04000302	离合器弹簧	SPRING, CLUTCH	1			3	
35	F8-04000305	离合器销	PIN, CLUTCH	1			19.5	
36	F8-04000102	水泵座	WATER PUMP SEAT	1			126	
37	F8-04000303	爪形离合器	CLUTCH, DOG	1			246	
38	GB/T879. 1-3. 5X28	重型直槽弹性圆柱销 3. 5X28	PIN 3. 5X28	1			4.5	
39	F8-04010000	正档齿轮组件	GEAR, FORWARD	1			303	
40	GB/T276-6204	深沟球轴承 6204	BEARING 6204	1			36	

[illegible]

零部件名称: 电气

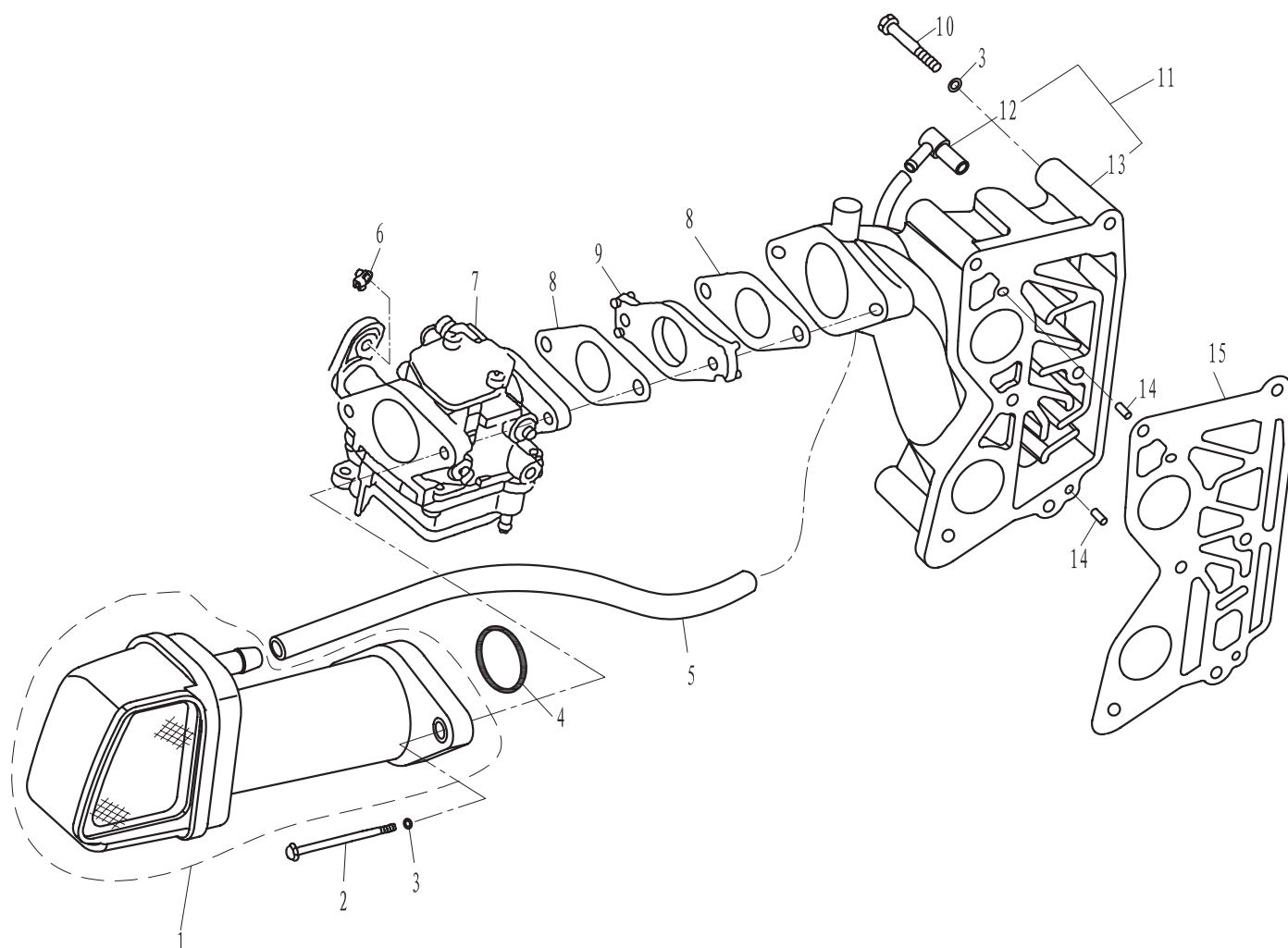
PARTS NAME: ELECTRICAL



[illegible]

进气系统

INTAKE

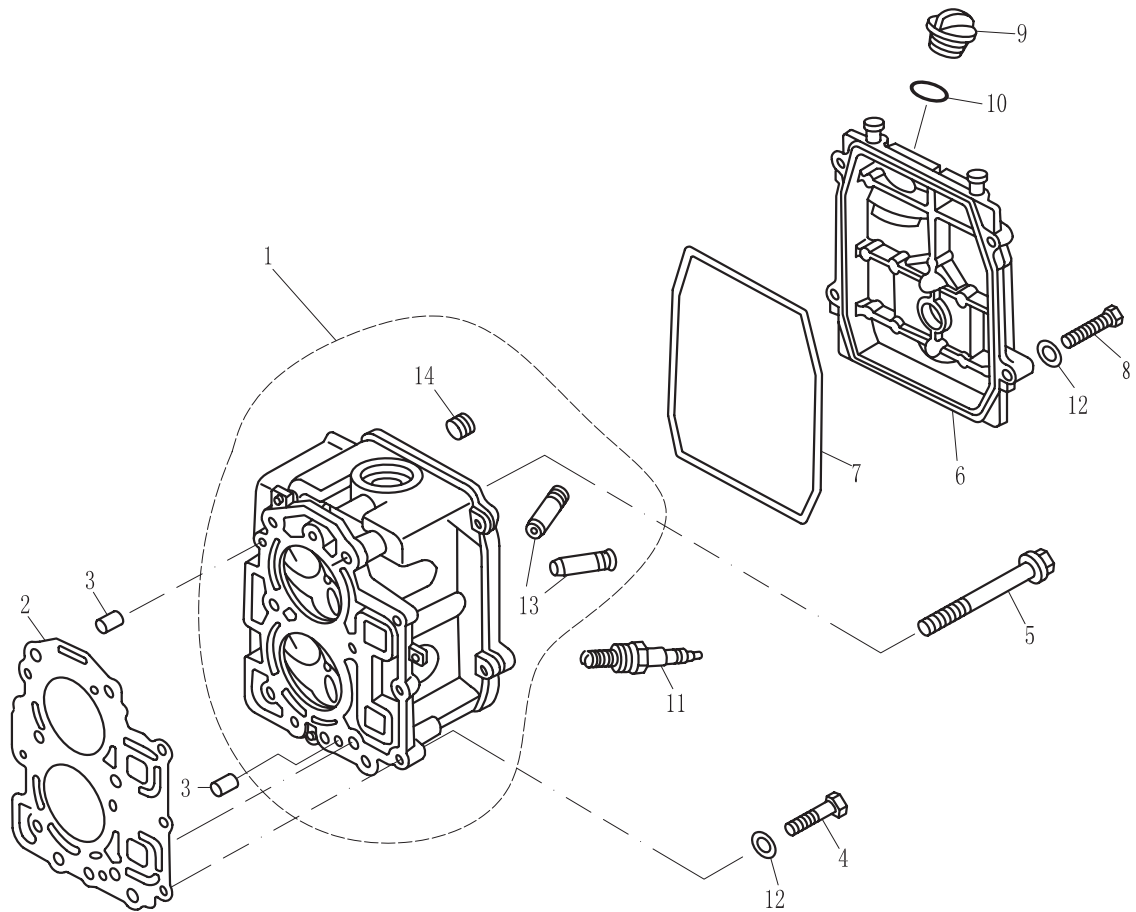
[illegible]

零部件名称:

气缸头

PARTS NAME:

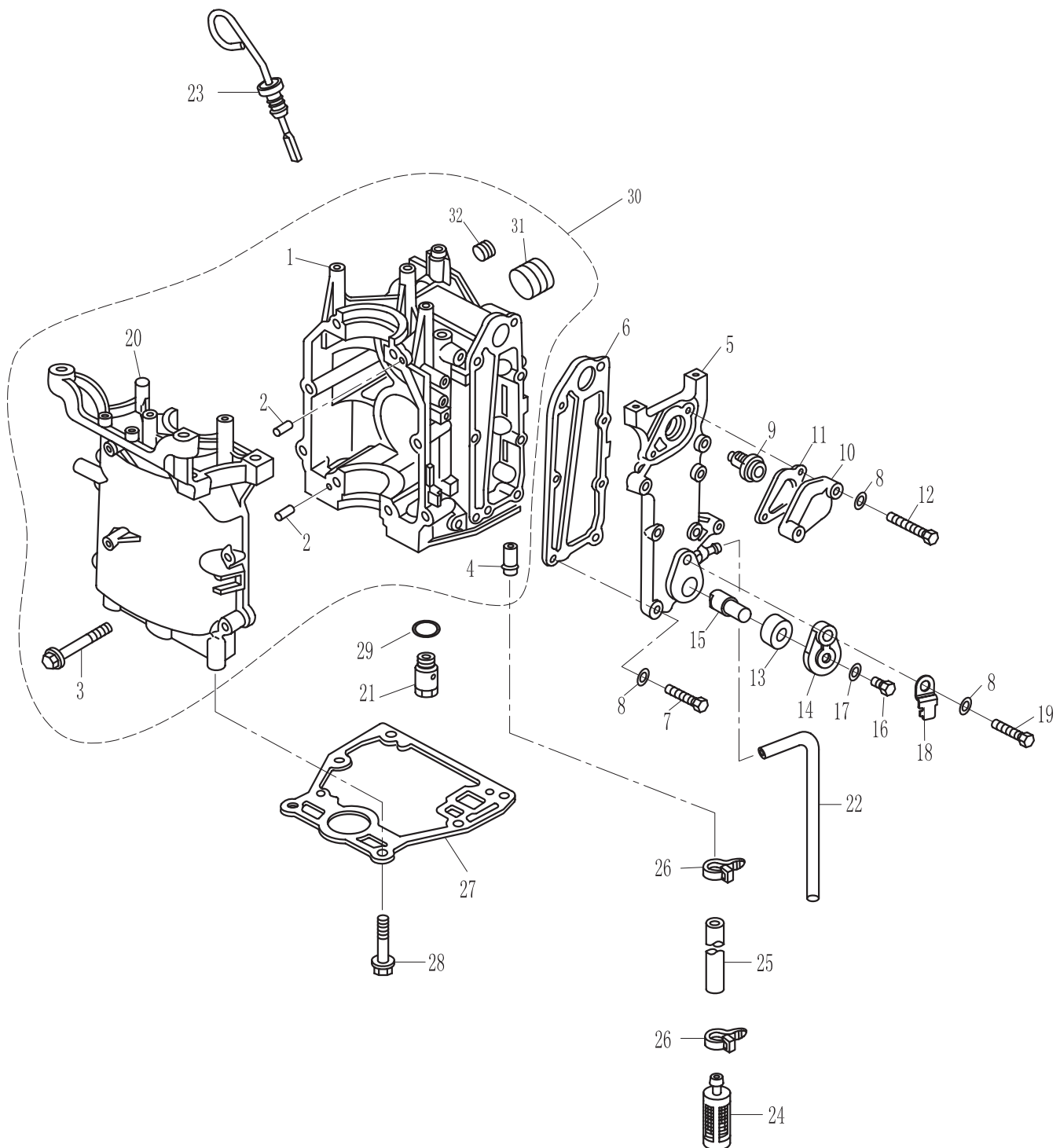
CYLINDER HEAD



参照号码	PART NO. 零件编号	DESCRIPTION 零件名称(中文)	DESCRIPTION 零件名称(英文)	QTY 数量				PC 售价	REMARKS 备注
1	F8-05030100	气缸头组件	CYLINDER HEAD ASSY	1				1227	
2	F8-05000100	气缸垫组件	CYLINDER HEAD GASKET	1				93	
3	F15-00000006	定位销 6x12	KNOCK 6x12	2				4.5	
4	F8-05000022	六角螺栓 M6x25	BOLT M6x25	3				3	
5	F4-04000039	六角凸缘螺栓 M8x50	BOLT M8x50	6				13.5	
6	F8-05000001	缸头罩	CYLINDER HEAD COVER	1				90	
7	F8-05000002	缸头罩密封圈	CYLINDER HEAD COVER GASKET	1				12	
8	GB/T5783-M6x25	六角螺栓 M6x25	BOLT M6x25	4				3	
9	F15-07050004	加油口盖	FILLER CAP, ENGINE OIL	1				10.5	
10	JASO F404 35 025	加油口盖密封圈	O-RING	1				4.5	
11	NGK DPR6E	火花塞	SPARK PLUG	2				66	
12	GB/T97.1-6	平垫圈 6	WASHER 6	7				1.5	
13	F15-07040104	气门导管	VALVE GUIDE BUSH	4				16.5	
14	F15-07010005	堵塞 1/4"	STOPPER 1/4"	2				12	

零部件名称: 曲轴箱

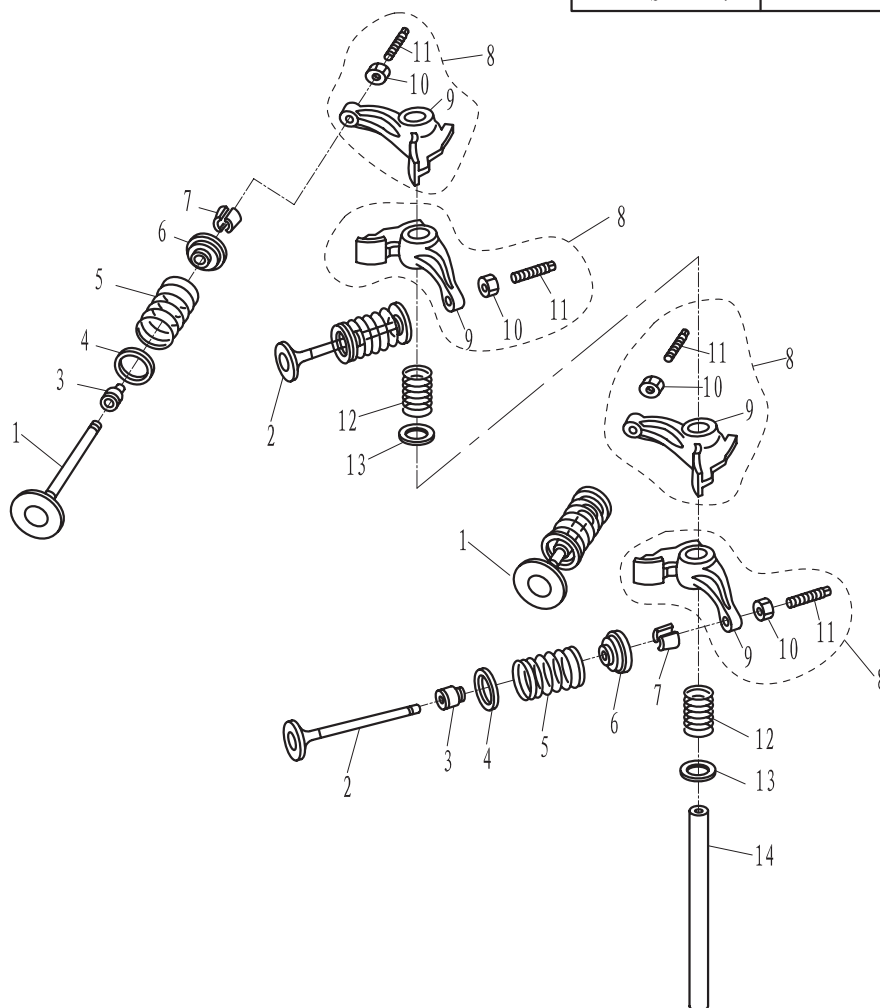
PARTS NAME: CRANK CASE



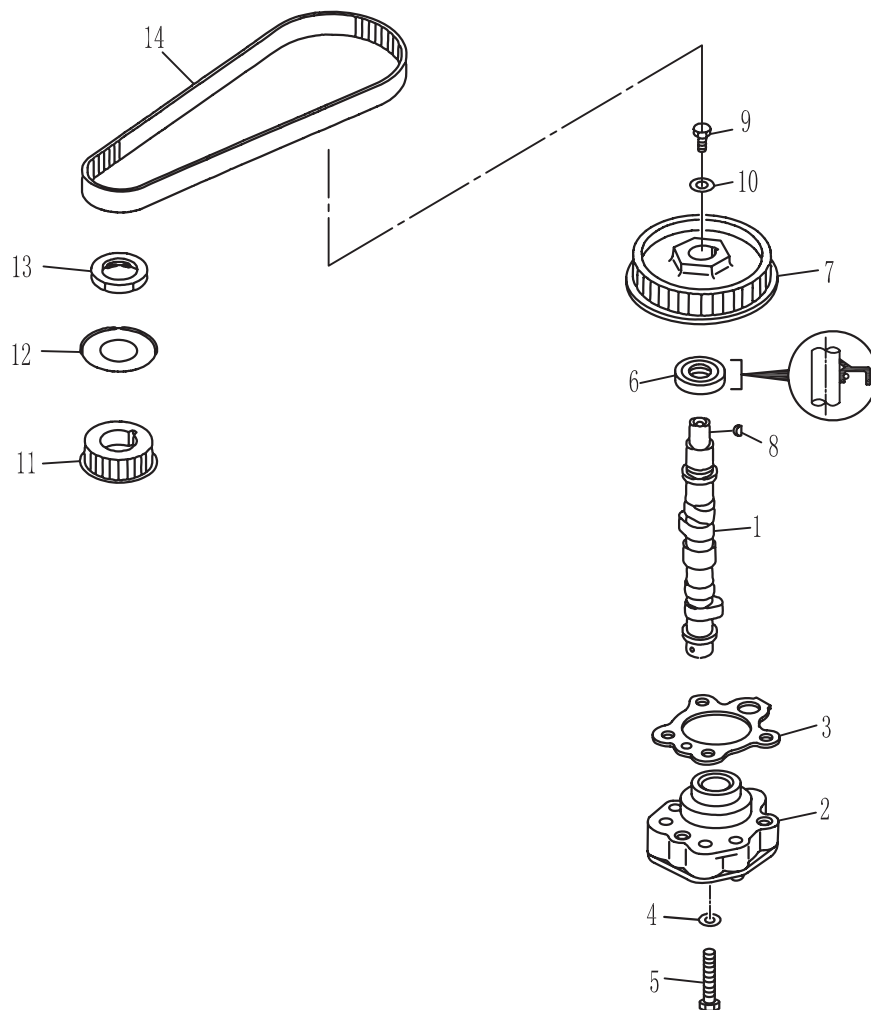
[illegible]

阀门

VALVE

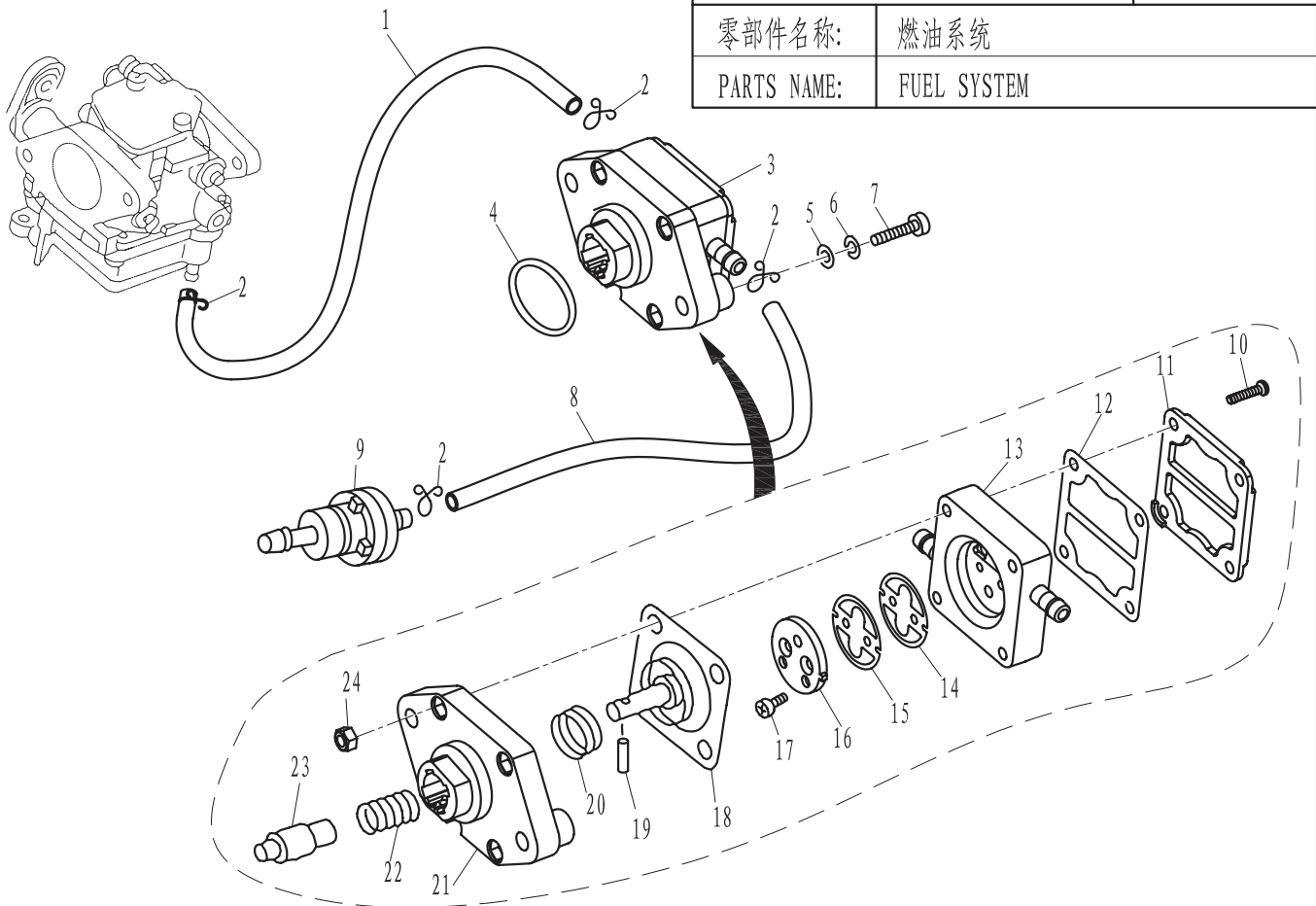
[illegible]

PARTS NAME:	CAMSHAFT
-------------	----------

[illegible]

零部件名称: 燃油系统

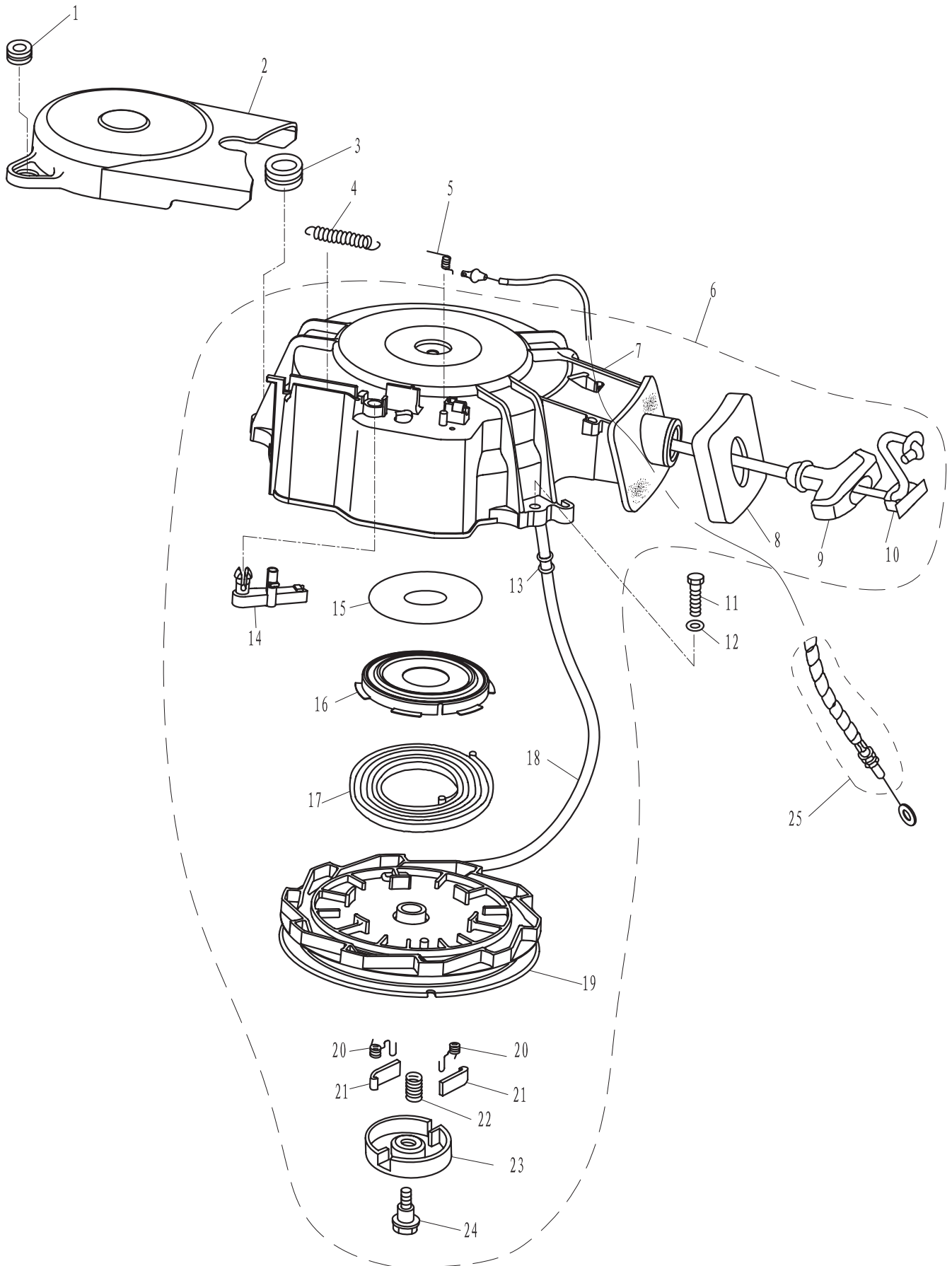
PARTS NAME: FUEL SYSTEM



SN. 参照号码	PART NO. 零件编号	DESCRIPTION 零件名称 (中文)	DESCRIPTION 零件名称 (英文)	QTY 数量				PC 售价	REMARKS 备注
1	F8-05000015	油泵燃油管 (出) $\phi 10 \times \phi 5 \times 280$	FUEL HOSE	1				10.5	
2	F4-04000030	油管夹簧B	CLIP "B", FUEL HOSE	4				1.5	
3	F8-05070000	燃油泵组件	FUEL PUMP ASSY	1				162	
4	JASO F404-A-24-021	燃油泵O型圈	O-RING, FUEL PUMP	1				4.5	
5	GB/T97.1-6	平垫圈 6	WASHER 6	2				1.5	
6	GB/T93-6	弹簧垫圈 6	SPRING-WASHER 6	2				1.5	
7	GB/T5783-M6X30	六角螺栓 M6X30	BOLT M6X30	2				3	
8	F8-05000014	油泵燃油管 (进) $\phi 10 \times \phi 5 \times 180$	FUEL HOSE	1				7.5	
9	F4-05000300	燃油过滤器组件	FUEL FILTER ASSY	1				6	
10	GB/T823-M4X25	十字槽小盘头螺钉M4X25	SCREW, SMALL PAN HEAD M4X25	4				1.5	
11	F4-04090003	燃油泵盖	COVER, FUEL PUMP	1				24	
12	F4-04090004	上隔膜	TOP DIAPHRAGM	1				18	
13	F4-04090100A	燃油泵壳	SHELL, FUEL PUMP	1				54	
14	F4-04090001A	瓣膜B	VALVE "B"	1				13.5	
15	F4-04090002A	瓣膜A	VALVE "A"	1				7.5	
16	F4-04090003A	隔膜限位块	LIMITING BLOCK, SEPTUM	1				6	
17	GB/T819.2-M3X5	十字槽沉头螺钉M3X5	SCREW M3X5	2				1.5	
18	F4-04090100	隔膜组件	DIAPHRAGM ASSY	1				66	
19	GB/T309-3X12	滚针 $\phi 3 \times 12$	ROLLER NEEDLE $\phi 3 \times 12$	1				4.5	
20	F4-04090008	隔膜弹簧	SPRING, DIAPHRAGM	1				4.5	
21	F4-04090001	燃油泵座	SEAT, FUEL PUMP	1				22.5	
22	F4-04090007	柱塞弹簧	SPRING, PLUNGER	1				3	
23	F8-05070001	柱塞	PLUNGER	1				16.5	
24	GB/T6170-M4	螺母 M4	NUT M4	4				1.5	

零部件名称: 起动器

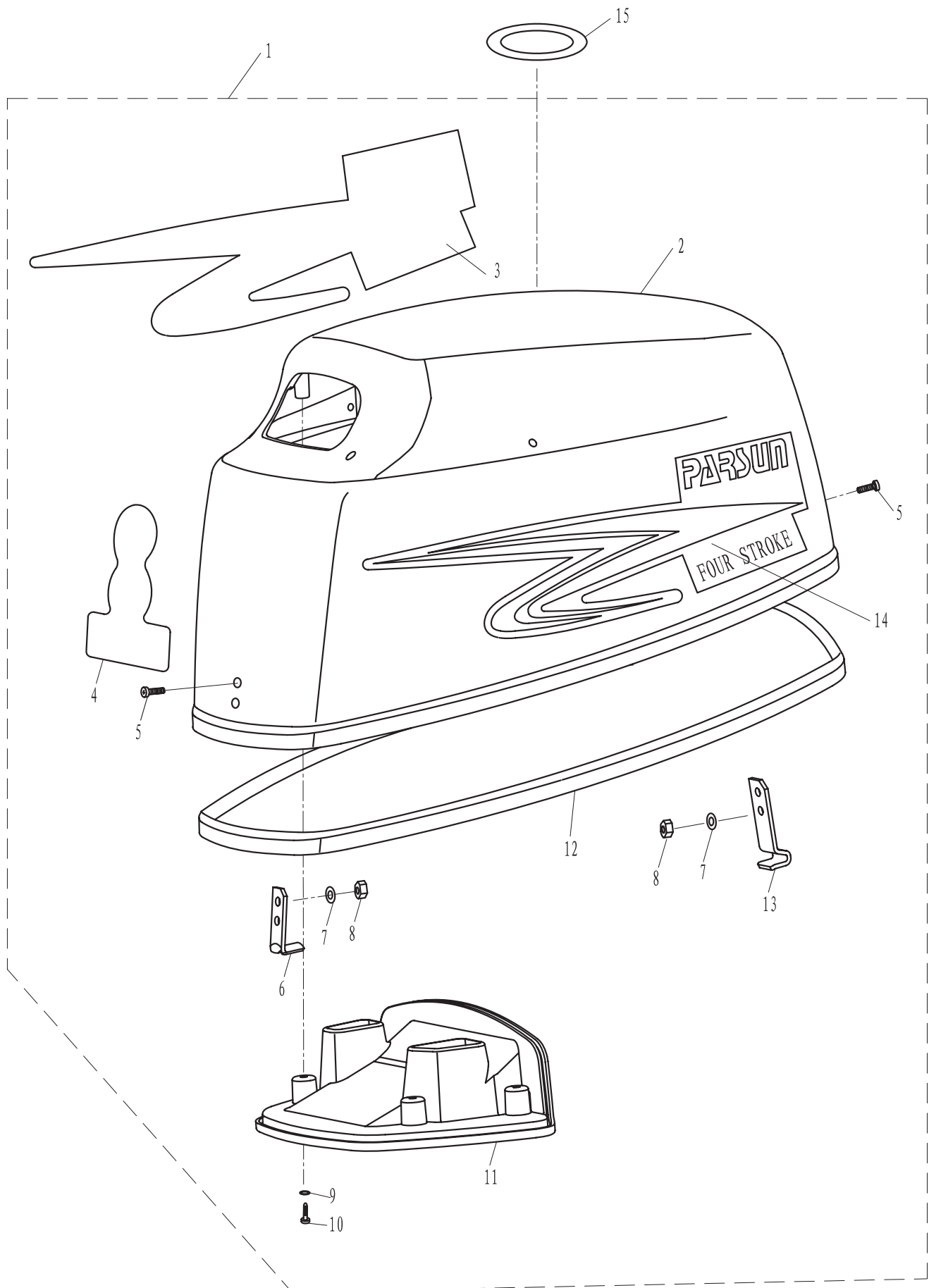
PARTS NAME: STARTER



[illegible]

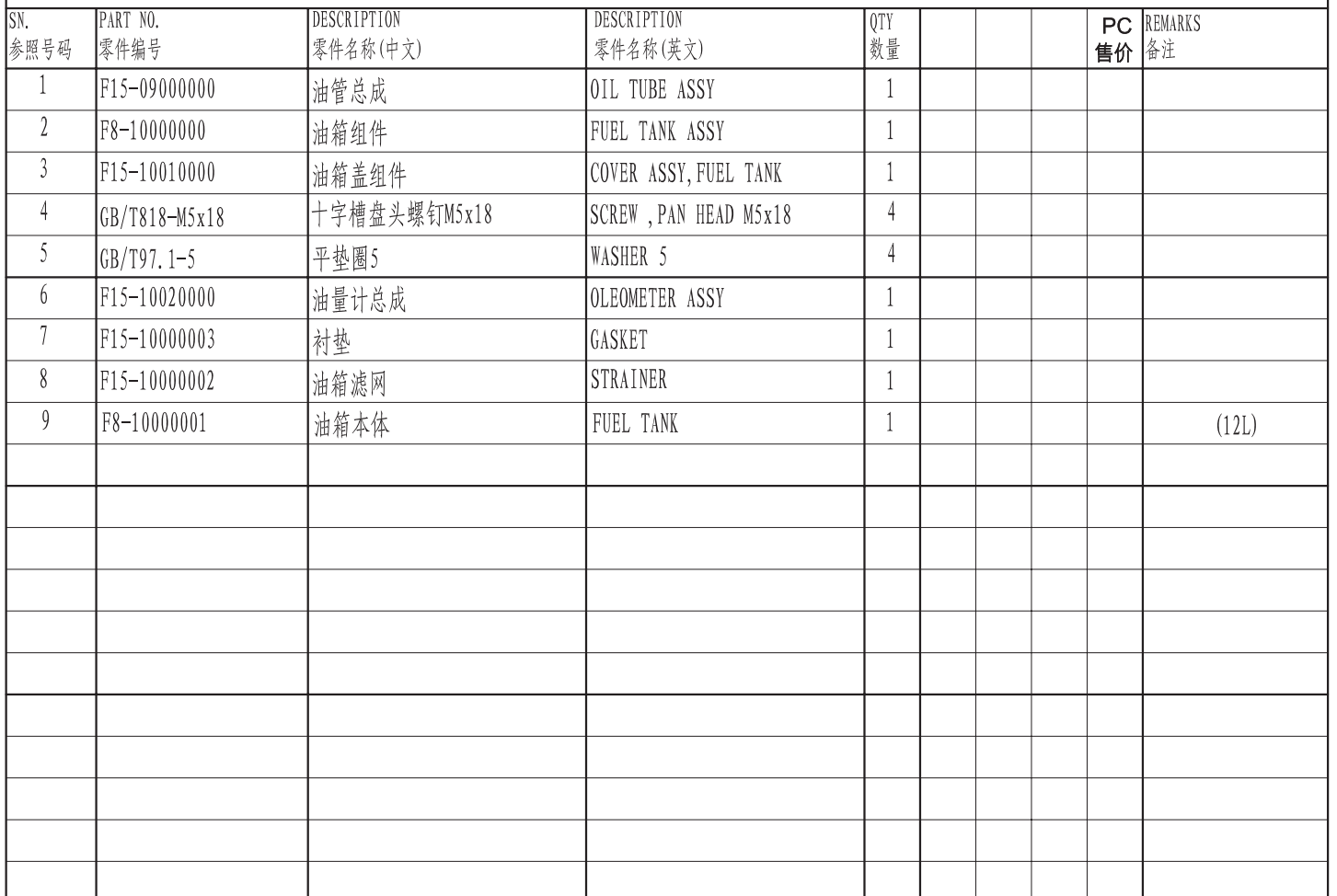
零部件名称: 顶罩组件

PARTS NAME: TOP COWLING ASSY



[illegible]

PARTS NAME:	FUEL TANK (12L)
-------------	-----------------

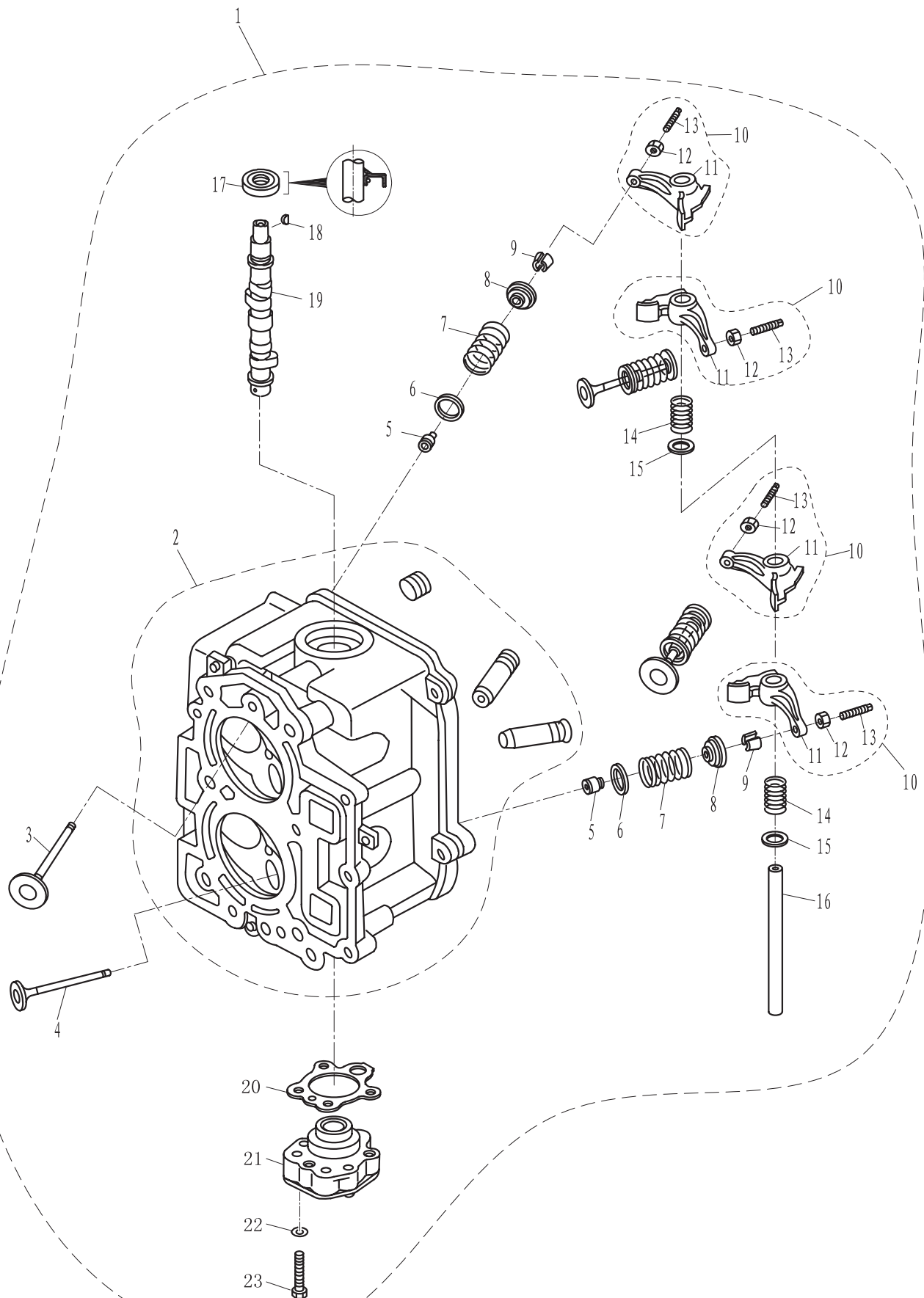


零部件名称:

气缸头总成(维修件)

PARTS NAME:

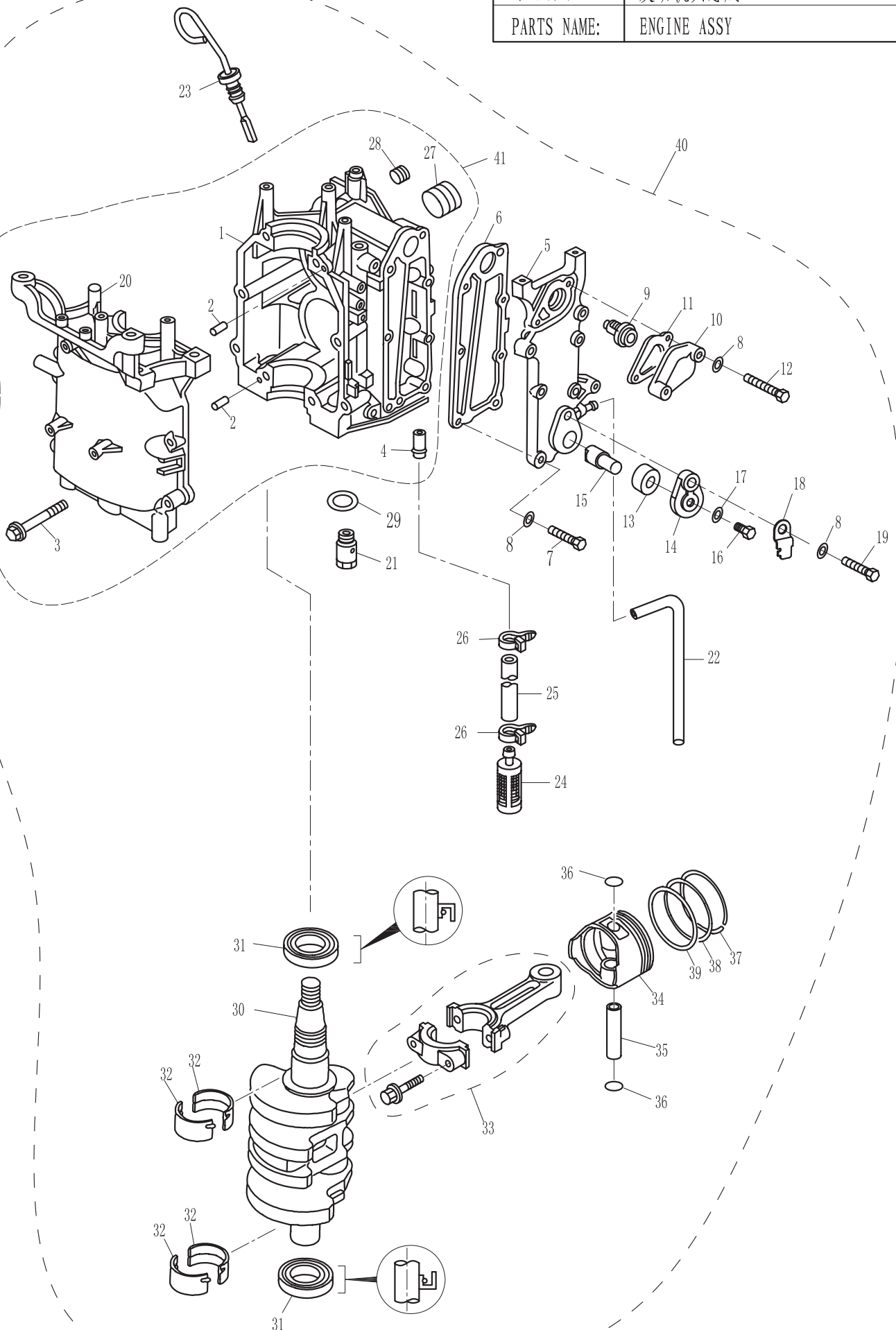
CYLINDER HEAD ASSY (REPAIR KIT)



[illegible]

零部件名称: 发动机头总成

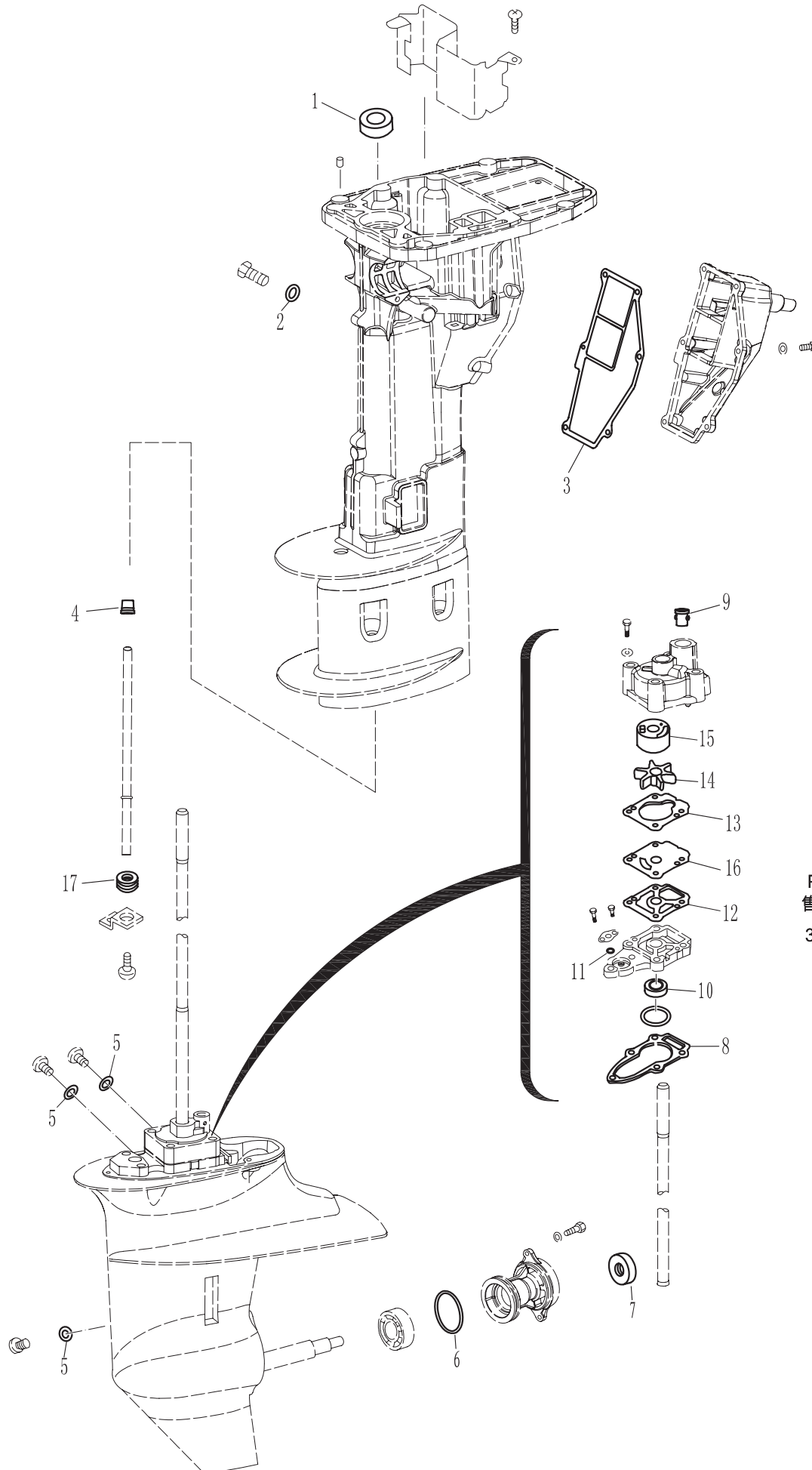
PARTS NAME: ENGINE ASSY



				F9.8C零件手册				PAGE IV OF VIII
				零部件名称:		发动机头总成		
				PARTS NAME:		ENGINE ASSY		
SN. 参照号码	PART NO. 零件编号	DESCRIPTION 零件名称(中文)	DESCRIPTION 零件名称(英文)	QTY 数量				REMARKS 备注
1	F8-05010001	机体	CYLINDER CASE	1				
2	F15-00000006	定位销 6x12	KNOCK 6x12	2				
3	F4-04000039	六角凸缘螺栓 M8x50	BOLT M8x50	8				
4	F8-05010002	精滤器接头	NIPPLE	1				
5	F8-05010003	水道盖板	EXHAUST COVER	1				
6	F8-05010004	水道盖板密封垫	GASKET, EXHAUST COVER	1				
7	GB/T5783-M6x25	六角螺栓 M6x25	BOLT M6x25	5				
8	GB/T97.1-6	平垫圈 6	WASHER 6	8				
9	F4-04000036	节温器	THERMOSTAT	1				
10	F8-05010006	节温器盖	THERMOSTAT COVER	1				
11	F8-05010005	节温器盖垫	GASKET, THERMOSTAT COVER	1				
12	GB/T5783-M6x40	六角螺栓 M6x40	BOLT M6x40	2				
13	F15-07010009	阳极密封圈	SEAL, ANODE	1				
14	F15-07010011	阳极盖板	ANODE COVER	1				
15	F15-07010008	机体阳极	ANODE	1				
16	GB/T818-M5x12	十字槽盘头螺栓 M5x12	BOLT M5x12	1				
17	GB/T97.1-5	平垫圈 5	WASHER 5	1				
18	F15-07010012	阳极止锁片	LOCKING PLATE, ANODE	1				
19	GB/T5783-M6x20	六角螺栓 M6x20	BOLT M6x20	2				
20	F8-05010011	机座	CRANK CASE	1				
21	F8-05000900	溢流阀组件	PLUNGER	1				
22	F8-05000024	水管	HOSE	1				
23	F8-00000200	机油尺组件	OIL LEVEL GAUGE	1				
24	F8-05000800	精滤器组件	OIL STRAINER	1				
25	F8-05000017	吸油管	HOSE	1				
26	F8-05000025	卡箍	HOOP	2				
27	F15-07010005	堵塞1/4"	STOPPER 1/4"	2				
28	F15-07010004	堵塞1/8"	STOPPER 1/8"	2				
29	GB/3452.1-13.2x1.8	溢流阀O形圈 13.2x1.8	O-RING	6				
30	F8-05020001	曲轴	CRANK	1				
31	F8-05010012	曲轴油封 30x45x8	OIL SEAL	2				
32	F8-05010009	轴瓦	BUSH	4				
33	F8-05020200	连杆组件	ROD, CONNECTING	2				
34	F8-057020101	活塞	PISTON	2				
35	F8-05020105	活塞销	PIN, PISTON	2				
36	F15-07020005	活塞销挡圈	CIRCLIP	4				
37	F8-05020102	活塞环 I	PISTON RING I	2				
38	F8-05020103	活塞环 II	PISTON RING II	2				
39	F8-05020104	组合油环	COMBINATION OIL RING	2				
40	F8-05000000	发动机总成	ENGINE ASSY	1				
41	F8-05010000	机体机座组件	CRANKCASE ASSY	1				

零部件名称: 附件 I (维修件)

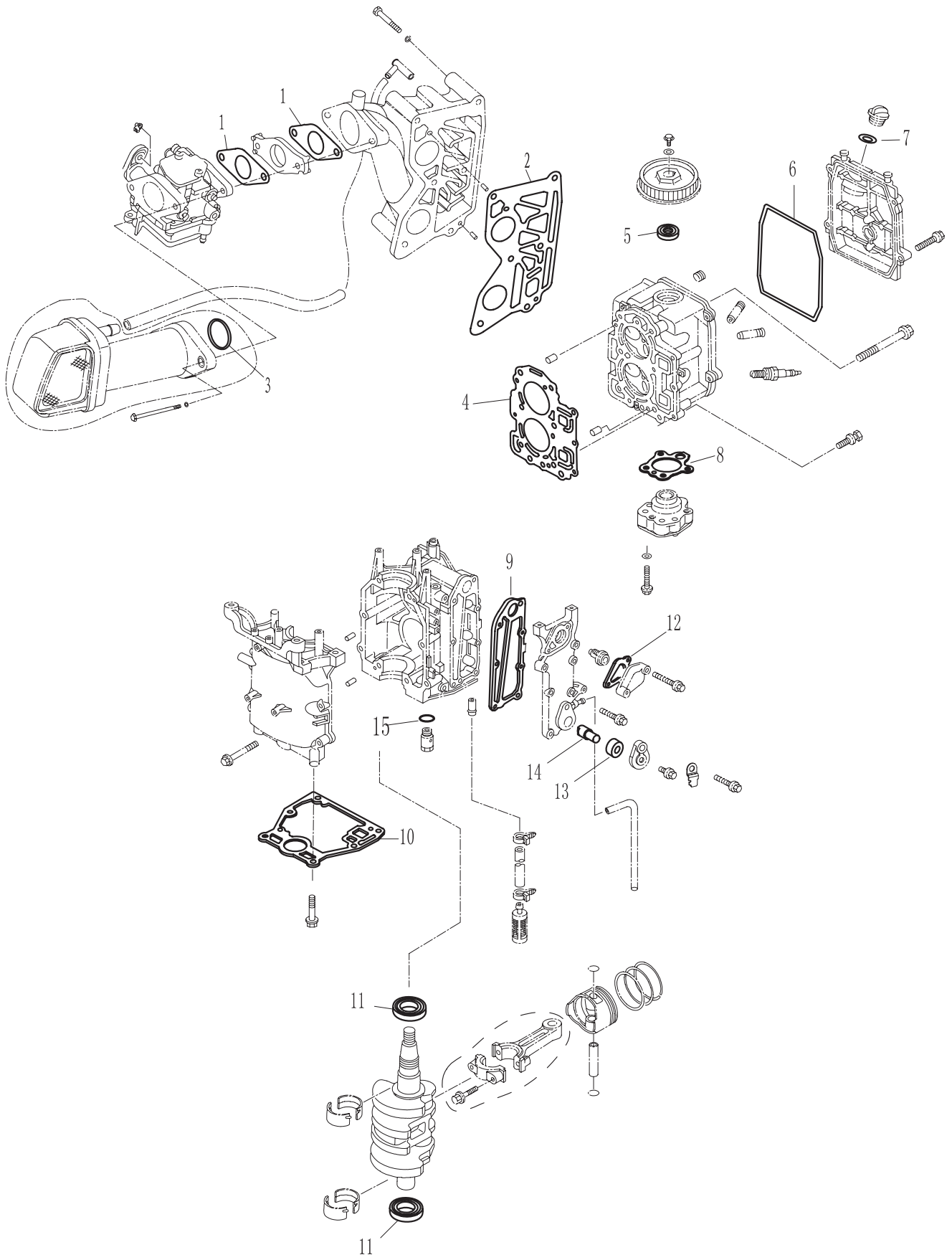
PARTS NAME: APPENDIX I (REPAIR KIT)

PC
售价
306

[illegible]

零部件名称: 附件 II (维修件)

PARTS NAME: APPENDIX II (REPAIRE KIT)



[illegible]