

零件目录 **2016**

PARTS CATALOGUE

<http://www.parsunchina.com>

PARSUN

SINCE 1968

百胜动力



两冲程/TWO STROKE

T4 0BMS

T4 0BML

苏州百胜动力机器股份有限公司

SUZHOU PARSUN POWER MACHINE CO.,LTD

目录

CONTENTS

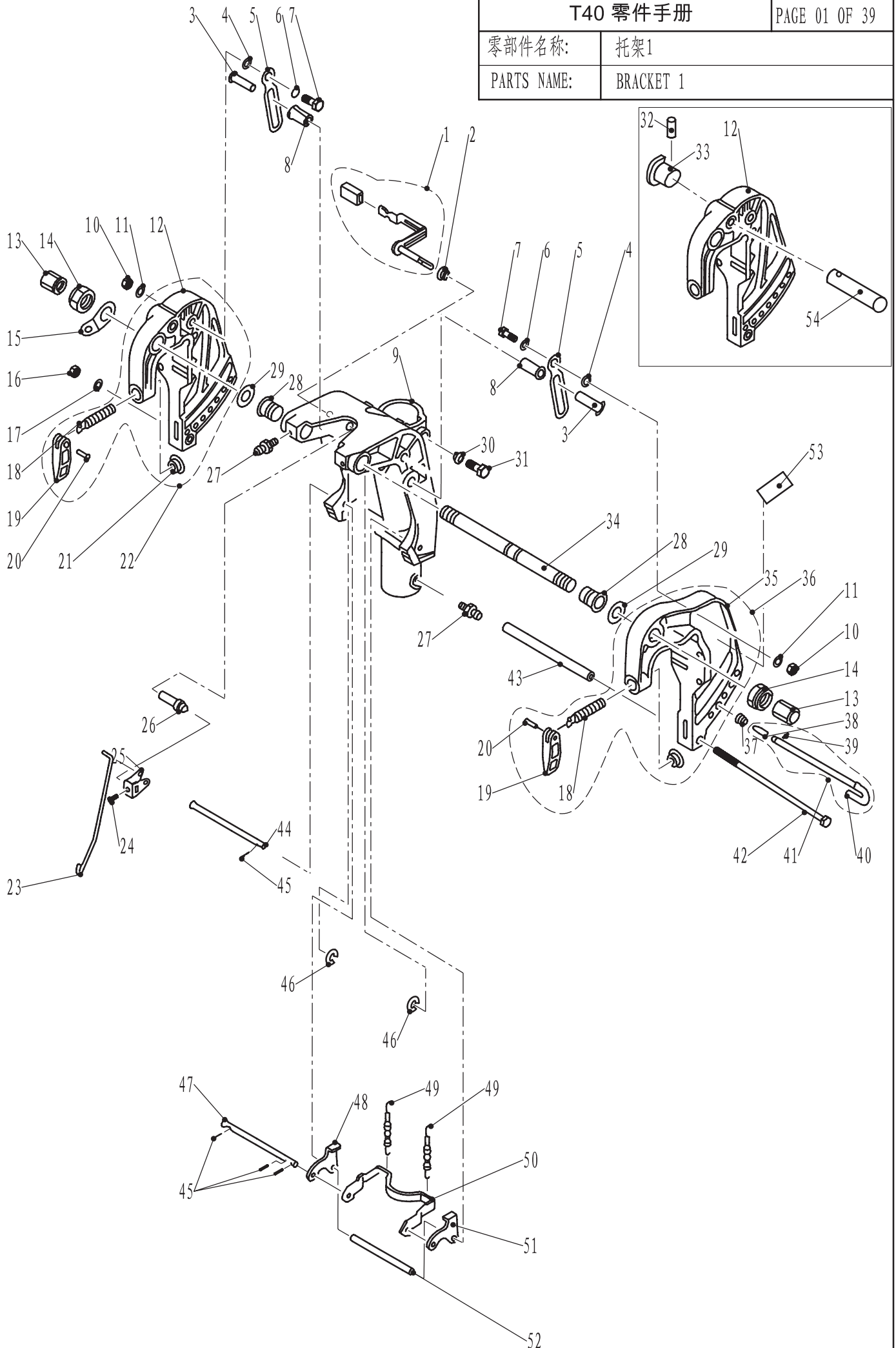
托架 1	1 ~ 3
BRACKET 1	1 ~ 3
托架 2	4 ~ 5
BRACKET 2	4 ~ 5
操舵系统	6 ~ 7
STEERING	6 ~ 7
水上装置壳体	8 ~ 9
UPPER CASING	8 ~ 9
底罩	10 ~ 11
BOTTOM COWLING	10 ~ 11
控制系统	12 ~ 13
CONTROL SYSTEM	12 ~ 13
水下装置壳体和驱动系统 1	14 ~ 16
LOWER CASING & DRIVE 1	14 ~ 16
水下装置壳体和驱动系统 2	17 ~ 18
LOWER CASING & DRIVE 2	17 ~ 18
发动机	19 ~ 20
GENERATOR	19 ~ 20
进气系统	21 ~ 22
INTAKE	21 ~ 22
气缸和曲轴箱	23 ~ 24
CYLINDER & CRANKCASE	23 ~ 24
曲轴和活塞	25 ~ 26
CRANKSHAFT & PISTON	25 ~ 26
燃油系统	27 ~ 28
FUEL	27 ~ 28
电气	29 ~ 30
ELECTRICAL	29 ~ 30
起动器	31 ~ 32
STARTER	31 ~ 32
顶罩组件	33 ~ 34
TOP COWLING ASSY	33 ~ 34
燃油箱	35
FUEL TANK	35
附录1(修理件)	36 ~ 37
APPENDIX 1(REPARE KIT)	36 ~ 37
附录2(修理件)	38 ~ 39
APPENDIX 2 (REPAIR KIT)	38 ~ 39

零部件名称:

托架1

PARTS NAME:

BRACKET 1



				T40 零件手册					PAGE 02 OF 39
				零部件名称:		托架1			
				PARTS NAME:		BRACKET 1			
参照号码 SN.	零件编号 PART NO.	零件名称(中文) DESCRIPTION	零件名称(英文) DESCRIPTION	数量 QTY				售价 PC	备注 REMARKS
1	F25-01010312	角度锁紧手柄组件	TILT CLAMP HANDLE ASSY	1				105	
2	F25-01010311	锁紧手柄衬圈	WASHER	1				6	
3	F25-01010318	制动板销轴（短）	PIN, DETENT	2				31.5	
4	F25-01010009	尼龙垫圈	WASHER, NYLON	2				6	
5	F25-01010321	倾斜制动板	PLATE, TILT DETENT	2				33	
6	F25-01010008	波形垫圈	WASHER , WAVE	2				6	
7	F25-01010007	扁六角轴位螺钉	SCREW , PROLATE HEXAGON	2				49.5	
8	F25-01010319	销轴尼龙衬套（高）	GASKET , NYLON	2				12	
9	F25-01010301	旋转支架	BRACKET , ROTARY	1				1980	L
	F25-01010301S	旋转支架	BRACKET , ROTARY	1				1914	S
10	GB/T6182-2000	非金属嵌件六角锁紧螺母M8	LOCKNUT M8	2				3	
11	F25-01010010	厚垫片8	THICK WASHER	2				6	
12	F25-01010201	右夹紧托架	BRACKET , RIGHT	1				702	
13	F25-01010011	塑料装饰螺母	NUT , PLASTIC	2				13.5	
14	F15-01010007	托架夹紧螺母	NUT , SELF-LOCKING	2				45	
15	F25-01010004	双孔固定板	PLATE , TWO HOLE	1				15	
16	GB/T6170-2000	六角螺母M8	NUT M8	1				3	
17	GB/T93-1987	弹簧垫圈8	WASHER , SPRING 8	1				1.5	
18	F25-01010104	舰板夹紧螺杆	SCREW , CLAMP	2				75	
19	F25-01010102	舰板夹紧手柄	CLAMP HANDLE	2				31.5	
20	F25-01010103	舰板夹紧手柄铆钉	RIVET	2				6	
21	F4-01010003	舰板夹紧圆盘	CLAMP PLATE	2				15	
22	T40-01010100	右夹紧托架组件	RIGHT BRACKET ASSY	1				792	
23	F25-01010315	角度锁紧支架连杆	ROD , BRACKET	1				22.5	
24	GB/T818-2000	十字槽盘头螺钉M5×6	SCREW , PAN HEAD M5×6	1				1.5	
25	F25-01010313	角度定位件	LEVER , ANGLE ORIENTATION	1				16.5	
26	F25-01010309	锁紧手柄轴套	BUSHING , HANDLE	1				49.5	
27	GB/T7940.1-95	直通式压注油杯	OIL , CUP	3				21	
28	F25-01010002	螺管尼龙衬套	BUSH , NYLON	2				16.5	
29	F25-01010003	螺管垫圈	WASHER	2				6	
30	F25-01010302	锁紧螺栓密封圈	WASHER , SEAL	1				4.5	
31	F25-01010303	六角凸缘螺栓M8×20	BOLT M8×20	1				30	
32	GB/T879.2-2000	轻型直槽弹性圆柱销Φ3X18	PIN Φ3X18	1				1.5	
33	T40-01010102	起翘限位手柄	HANDLE	1				9	
34	F15-01010001	夹紧托架双头螺管	BOLT, CLAMP BRACKET	1				141	
35	F25-01010101	左夹紧托架	BRACKET , LEFT	1				702	
36	F25-01010100	左夹紧托架组件	LEFT BRACKET ASSY	1				792	
37	F25-01010403	锥形弹簧	CONICAL SPRING	1				90	
38	F25-01010402	防脱落支脚	PLATE , PREVENT DESQUAMATION	1					
39	GB/T879.1-2000	弹性圆柱销3×8	PIN , SPRING 3×8	1					
40	F25-01010401	角度限位杆	ROD , LIMITATIVE ANGLE	1					
41	F25-01010400	角度限位杆组件	ROD ASSY, LIMIT ANGLE	1				93	
42	F25-01010005	六角长螺栓M8×255	LONG BOLT M8×255	1				66	

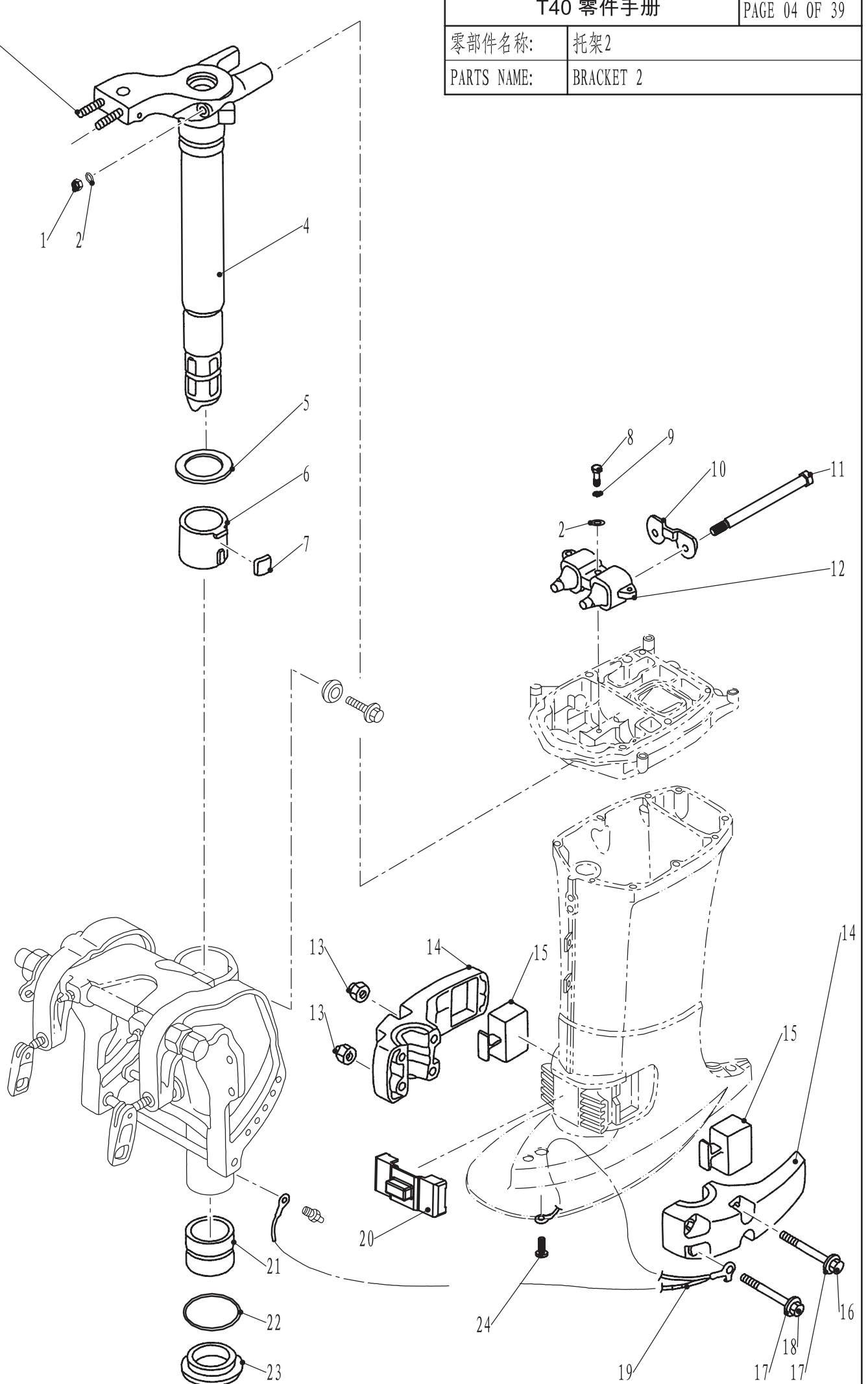
[illegible]

零部件名称:

托架2

PARTS NAME:

BRACKET 2



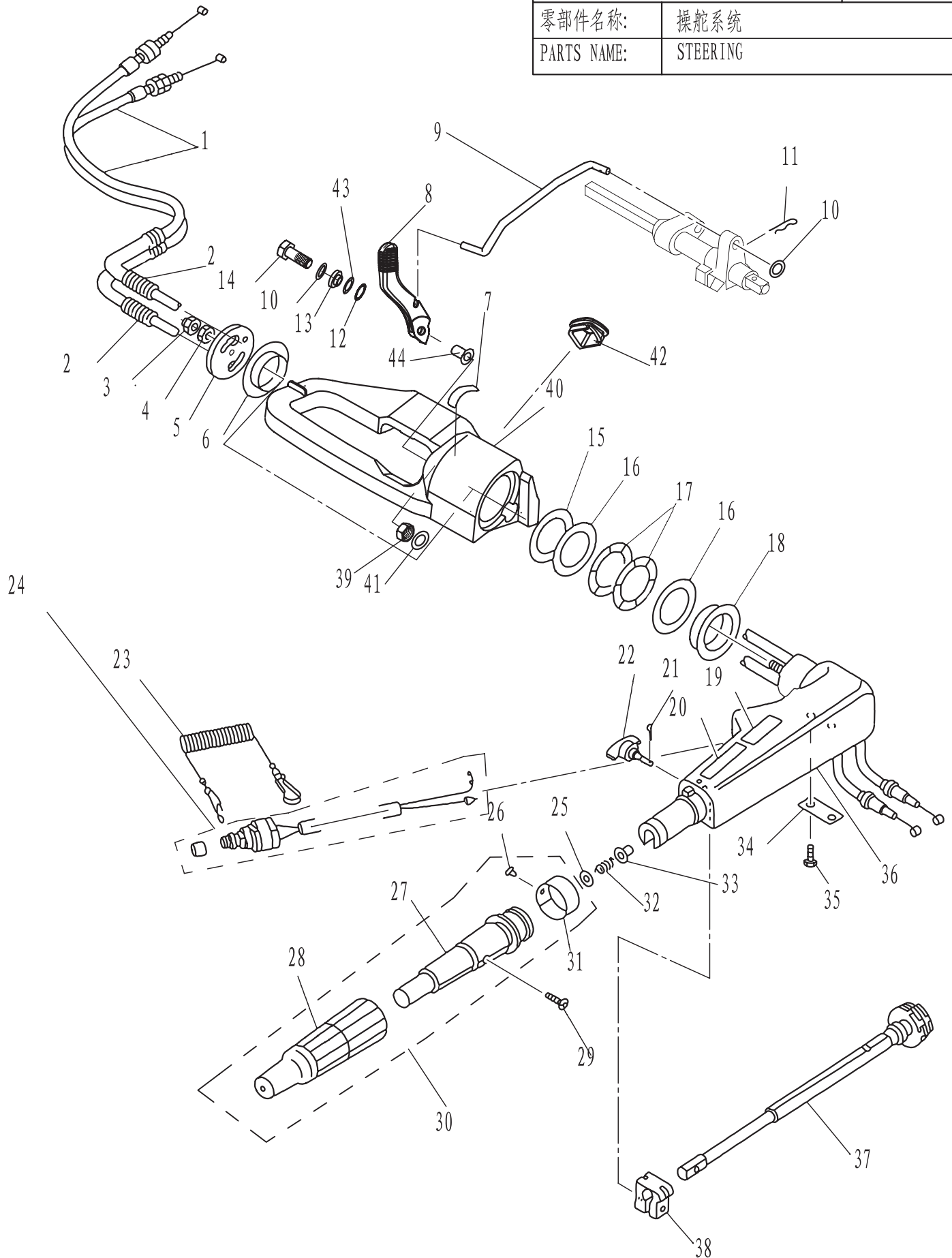
[illegible]

零部件名称:

操舵系统

PARTS NAME:

STEERING



SN. 参照号码	PART NO. 零件编号	DESCRIPTION 零件名称 (中文)	DESCRIPTION 零件名称 (英文)	QTY 数量				PC 售价	REMARKS 备注
1	T40-01020102	油门钢索组件	THROTTLE CABLE ASSY	2				54	
2	F25-01030002	波纹塑管	TUBE , WAVE PLASTIC	2				3	

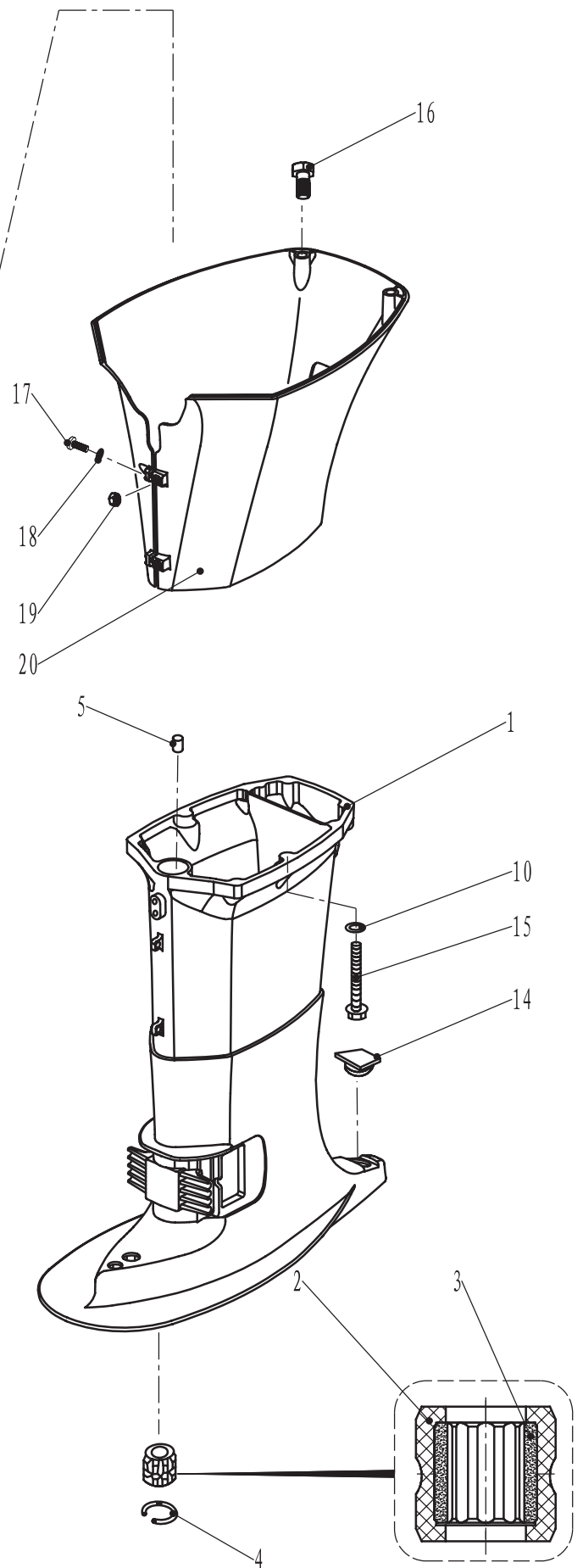
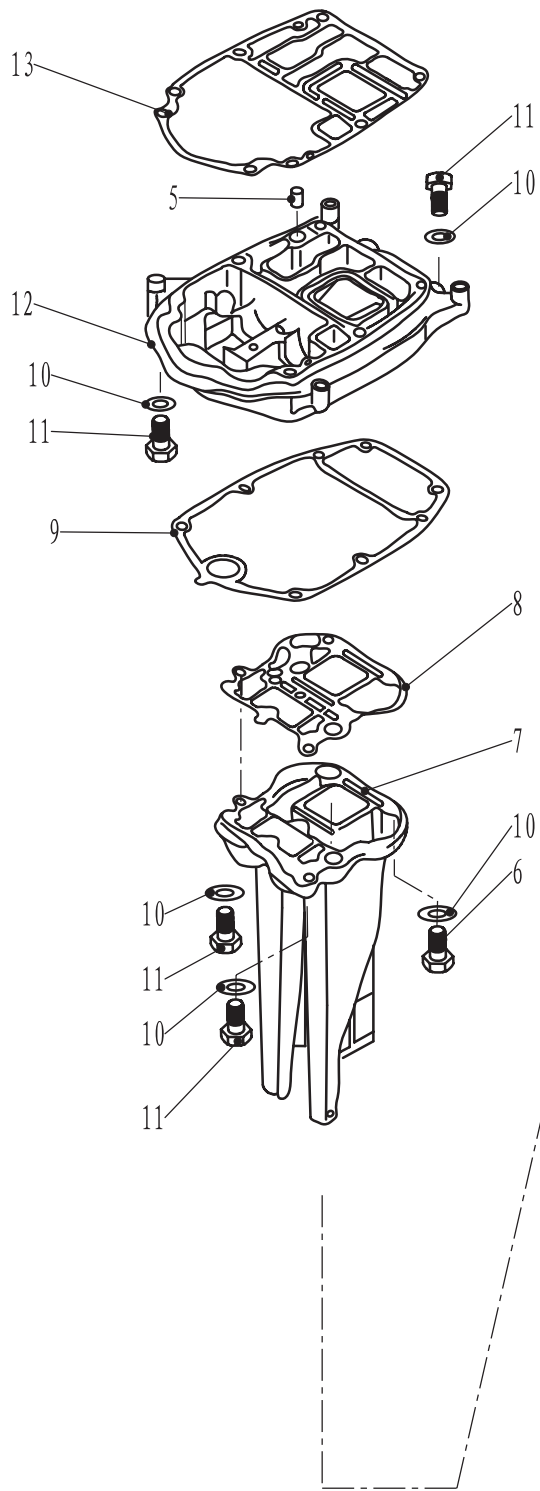
				T40 零件手册				PAGE 07 OF 39
				零部件名称:		操舵系统		
				PARTS NAME:		STEERING		
SN. 参照号码	PART NO. 零件编号	DESCRIPTION 零件名称 (中文)	DESCRIPTION 零件名称 (英文)	QTY 数量				售价 PC REMARKS 备注
3	GB/T889.2-2000	细牙非金属嵌件六角锁紧螺母M10×1.25	LOCKNUT M10×1.25	1				18
4	GB/T6171-86	六角螺母M10×1.25	NUT M10×1.25	1				12
5	F15-01000013	手柄定位盖板	PLATE ,HANDLE ORIENTATION	1				36
6	F15-01000011	手柄衬套(低)	WASHER ,HANDLE (LOW)	1				6
7	F15-12000011	标贴11	MARK 11	1				3
8	T40-00000002	变档手柄	HANDLE ,GEAR SHIFT	1				40.5
9	T40-00000007	变档连杆	LINK ,SHIFT ROD	1				30
10	GB/T97.1-85	平垫圈6	WASHER 6	2				1.5
11	F15-00000012	夹簧	SPRING ,CLAMP	1				4.5
12	T40-00000004	手柄垫圈	WASHER ,HANDLE	2				4.5
13	T40-00000006	手柄垫块	BLOCK ,HANDLE	2				49.5
14	GB/T5782-2000	六角头螺栓M6×50	BOLT M6×50	1				4.5
15	F15-01000012	衬套尼龙圈	WASHER ,NYLON	1				6
16	F15-01000008	衬套垫圈	WASHER	2				6
17	F15-01000009	衬套波形垫圈	WASHER ,WAVE	2				19.5
18	F15-01000007	手柄衬套(高)	BUSH ,HANDLE	1				9
19	F4-08000105	标贴5	MARK 5	1				3
20	F4-08000104	标贴4	MARK 4	1				3
21	GB/T91-86	开口销φ1.6×12	PIN ,COTTER φ1.6×12	1				1.5
22	F15-01030200	阻力调整旋钮组件	BOLT	1				27
23	F4-01090401	引擎停止安全索	STOPER ,HANG ROPE ASSY	1				46.5
24	F4-01090400	急停开关组件	ENGINE STOP SWITCH ASSY	1				66
25	GB/T848-85	小垫圈10	SMALL WASHER 10	1				1.5
26	GB/T827-86	标牌铆钉2×5	RIVET ,SEMICIRCLE 2×5	1				1.5
27	F4-01090301	操舵手柄塑胶套	GRIP ,STEERING HANDLE	1				49.5
28	F4-01090302	操舵手柄橡胶套	RUBBER ,HANDLE	1				30
29	GB/T820-85	十字槽半沉头螺钉M5×25	SCREW,PAN HEAD M5×25	1				1.5
30	F4-01090300	操舵手柄塑胶套组件	STEERING HANDLE ASSY	1				90
31	T15-01020303	油门标志牌	INDICATOR THROTTLE	1				9
32	F4-01090007	压缩弹簧	SPRING ,COMPRESSION	1				6
33	F4-01090006	衬套	BUSH	1				4.5
34	F15-01030005	节气门固定板	STAY	1				9
35	GB/T5783-2000	六角头螺栓M6×20	BOLT M6×20	2				3
36	F15-01030001	操舵手柄	HANDLE STEERING	1				264
37	F15-01030100	节气门杆组件	LEVER ,THROTTLE ASSY	1				93
38	F4-01090003	操舵手柄握把摩擦块	FRICTION	1				10.5
39	GB/T6170-2000	锁紧螺母 M6	LOCKNUT M6	1				1.5
40	F25-01030001	手柄托架	BRACKET,HANDLE	1				291
41	GB/T97.1-85	平垫圈 6	WASHER 6	1				1.5
42	T40-01020001	手柄托架护套	BUSHING ,HANDLE	1				13.5
43	T40-00000005	波形垫圈	WASHER ,WAVE	1				10.5
44	T40-00000003	凸缘垫管	TUBE, FLANGE	1				9

零部件名称:

水上装置壳体

PARTS NAME:

UPPER CASING



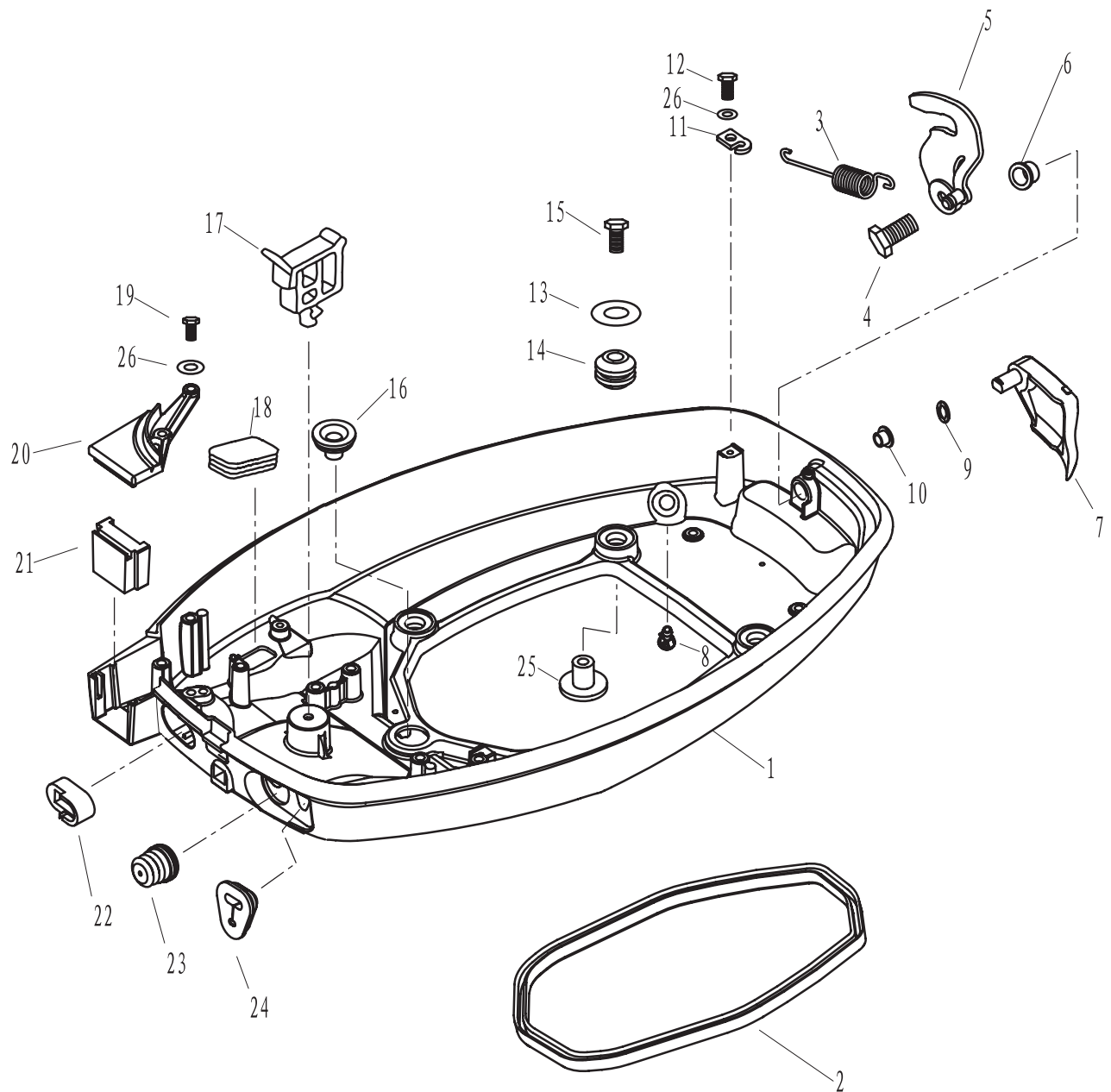
[illegible]

零部件名称:

底罩

PARTS NAME:

BOTTOM COWLING



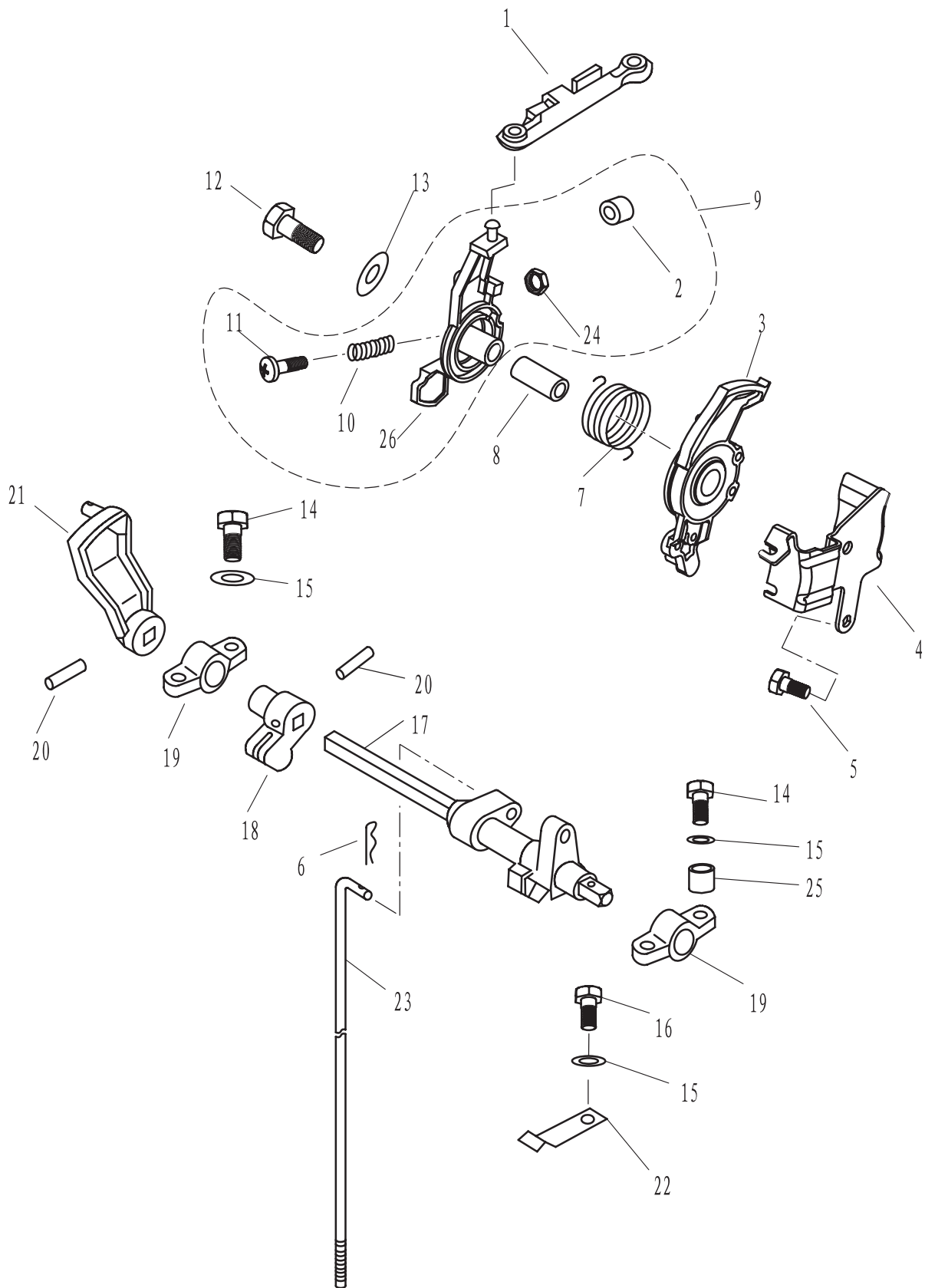
[illegible]

零部件名称:

控制系统

PARTS NAME:

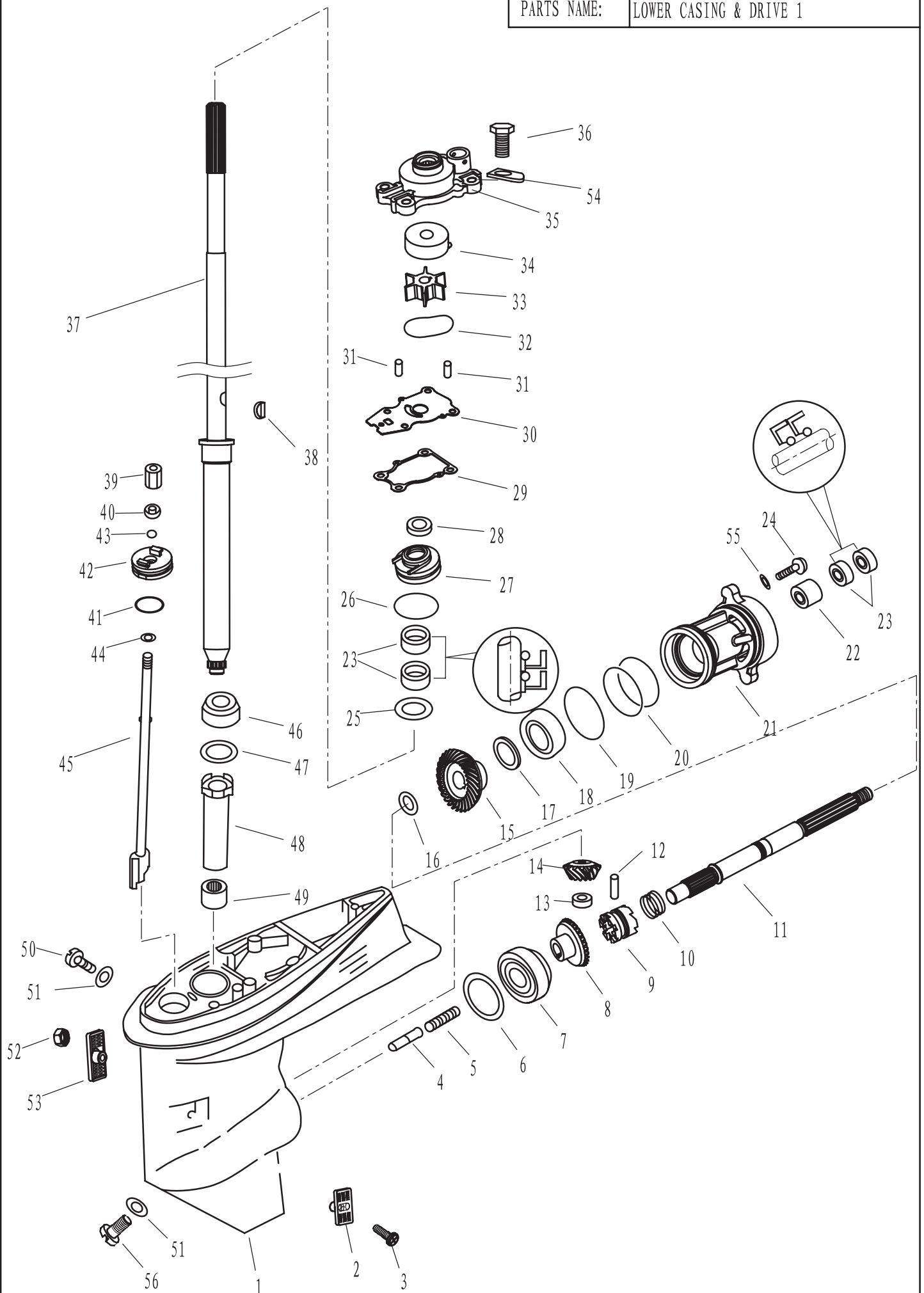
CONTROL SYSTEM



[illegible]

零部件名称: 水下装置壳体 and 驱动系统1

PARTS NAME: LOWER CASING & DRIVE 1



				T40 零件手册				PAGE 15 OF 39	
				零部件名称:		水下装置壳体和驱动系统1			
				PARTS NAME:		LOWER CASING & DRIVE 1			
SN. 参照号码	PART NO. 零件编号	DESCRIPTION 零件名称 (中文)	DESCRIPTION 零件名称 (英文)	QTY 数量				售价 PC	REMARKS 备注
1	T40-04000001	水下装置壳体	LOWER CASING	1				2658	
2	T40-04000022	进水口A	WATER INLET A	1				12	
3	GB/T820-2000	十字槽半沉头螺钉M5X28	SCREW, PAN HEAD M5 × 28	1				1.5	
4	T40-04050006	变档柱塞	PLUNGER, SHIFT	1				27	
5	T40-04050002	离合器弹簧	SPRING, CLUTCH	1				6	
6	T40-04000004	正档齿轮填隙片	SHIM					9/片	
	T40-04000004-1	填隙片 (T = 0.10毫米)	SHIM (T = 0.10mm)						
	T40-04000004-2	填隙片 (T = 0.12毫米)	SHIM (T = 0.12mm)						
	T40-04000004-3	填隙片 (T = 0.15毫米)	SHIM (T = 0.15mm)						
	T40-04000004-4	填隙片 (T = 0.18毫米)	SHIM (T = 0.18mm)						
	T40-04000004-5	填隙片 (T = 0.30毫米)	SHIM (T = 0.30mm)						
	T40-04000004-6	填隙片 (T = 0.40毫米)	SHIM (T = 0.40mm)						
	T40-04000004-7	填隙片 (T = 0.50毫米)	SHIM (T = 0.50mm)						
7	T40-04000024	圆锥滚子轴承	BEARING	1				288	
8	T40-04020000	正档齿轮组件	GEAR, FORWARD	1				396	
9	T40-04050003	爪形离合器	CLUTCH, DOG	1				429	
10	T40-04050005	离合器簧环	RING, CLUTCH	1				4.5	
11	T40-04050001	螺旋桨轴	SHAFT, PROPELLER	1				1551	
12	T40-04050004	离合器销	PIN, CLUTCH	1				7.5	
13	T40-04000006	小齿轮螺母M12X1.25	NUT, PINION	1				33	
14	T40-04000005	小齿轮	PINION	1				240	
15	T40-04060006	倒档齿轮	GEAR, REVERSE	1				396	
16	T40-04050007	倒档齿轮垫圈	WASHER, REVERSE GEAR	1				10.5	
17	T40-04060005	倒档齿轮填隙片	SHIM					9/片	
	T40-04060005-1	填隙片 (T = 0.10毫米)	SHIM (T = 0.10mm)						
	T40-04060005-2	填隙片 (T = 0.12毫米)	SHIM (T = 0.12mm)						
	T40-04060005-3	填隙片 (T = 0.15毫米)	SHIM (T = 0.15mm)						
	T40-04060005-4	填隙片 (T = 0.18毫米)	SHIM (T = 0.18mm)						
	T40-04060005-5	填隙片 (T = 0.30毫米)	SHIM (T = 0.30mm)						
	T40-04060005-6	填隙片 (T = 0.40毫米)	SHIM (T = 0.40mm)						
	T40-04060005-7	填隙片 (T = 0.50毫米)	SHIM (T = 0.50mm)						
18	T40-04000025	深沟球轴承	BEARING	1				75	
19	T40-04060002	水下装置壳体盖O型密封圈A	O-RING A, COVER	1				7.5	
20	T40-04060003	水下装置壳体盖O型密封圈B	O-RING B, COVER	2				7.5	
21	T40-04060001	水下装置壳体盖	COVER, LOWER CASING	1				228	
22	T40-04000028	滚针轴承	BEARING	1				126	
23	F25-04010003	水下装置壳体盖油封22X36X6	OIL SEAL	4				39	
24	GB/T5783-2000	六角螺栓M8X25	BOLT, HEXAGON M8X25	2				9	
25	T40-04000008	大垫圈	BIG WASHER	1				9	
26	JASO F404 24-50	油封壳体A O型密封圈	O-RING , OIL SEAL	1				12	
27	T40-04040001	油封壳体A	CASING, OIL SEAL	1				82.5	
28	T40-04000009	油封盖	COVER , OIL SEAL	1				6	
29	T40-04000010	水泵座密封圈	SEAL , WATER PUMP	1				24	

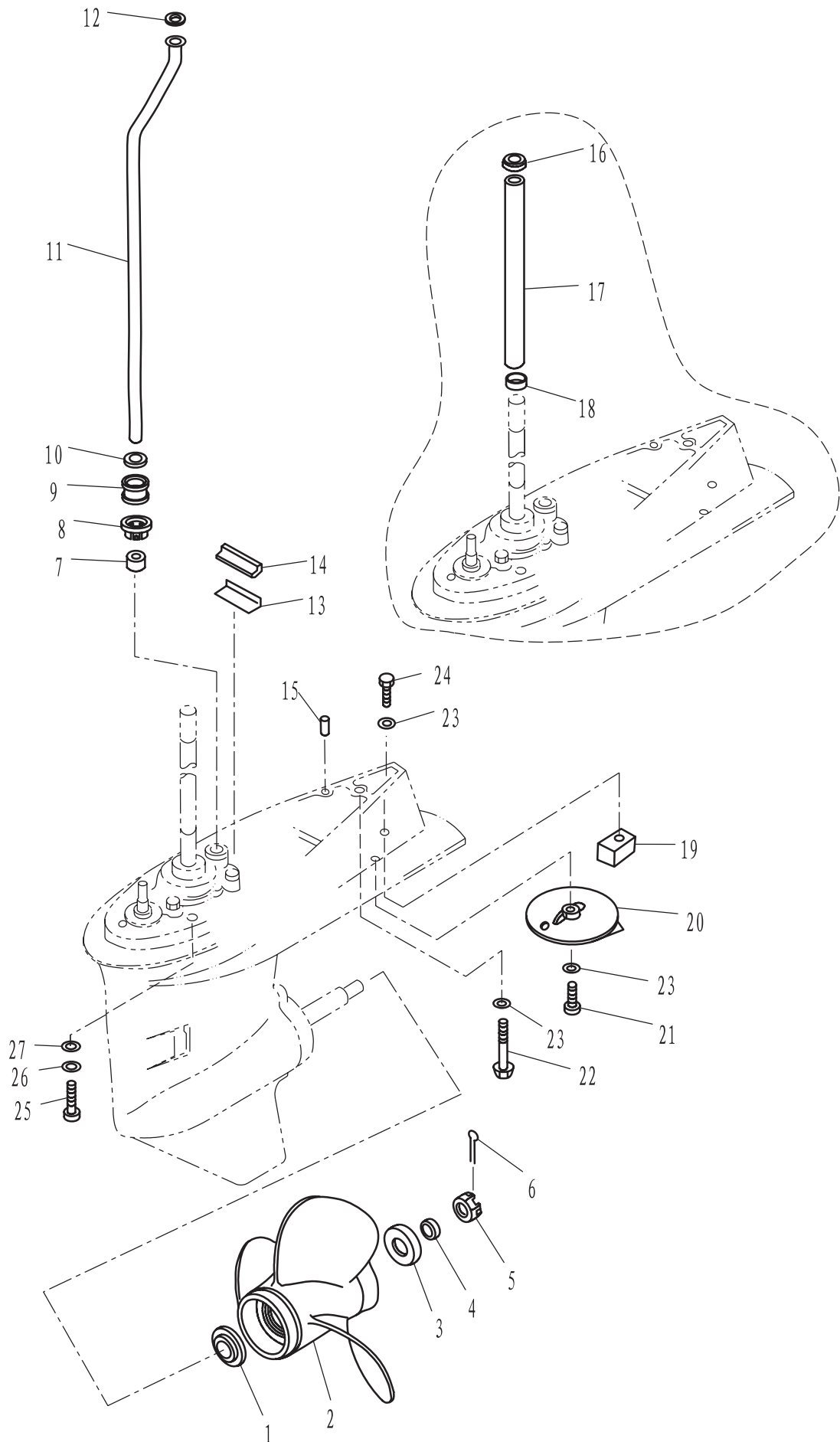
[illegible]

零部件名称:

水下装置壳体 and 驱动系统 2

PARTS NAME:

LOWER CASING & DRIVE 2



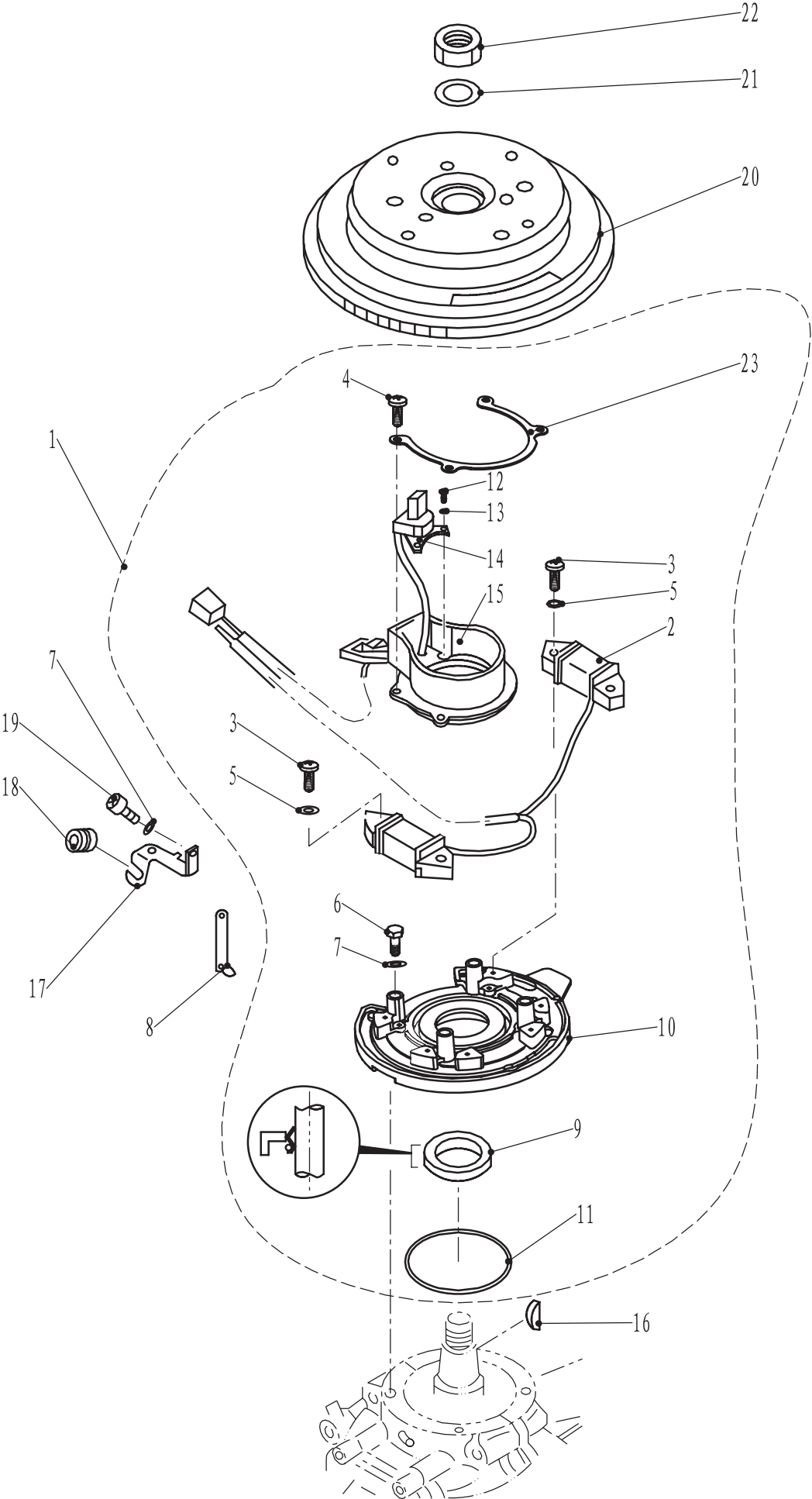
[illegible]

零部件名称:

发电机

PARTS NAME:

GENERATOR



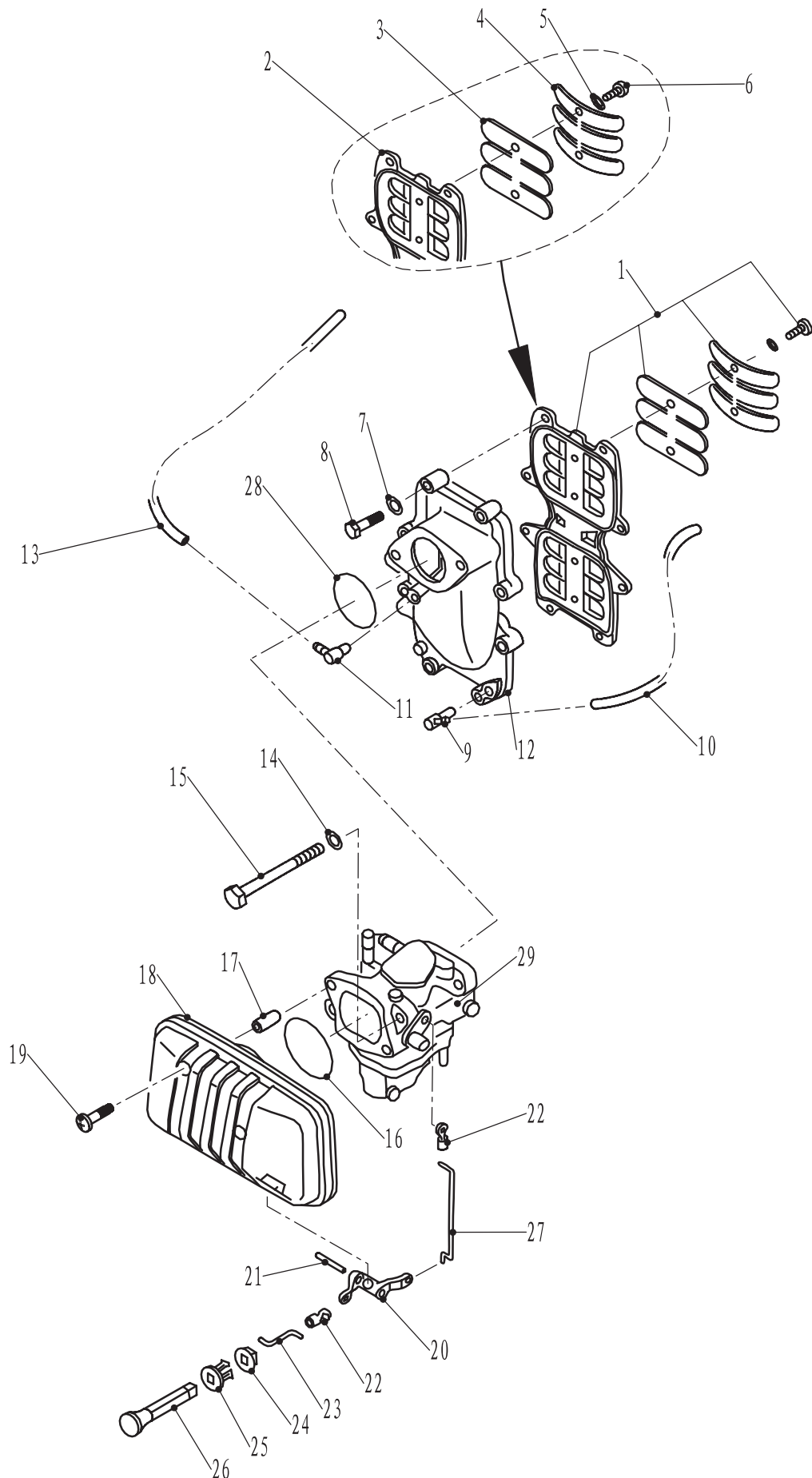
[illegible]

零部件名称:

进气系统

PARTS NAME:

INTAKE



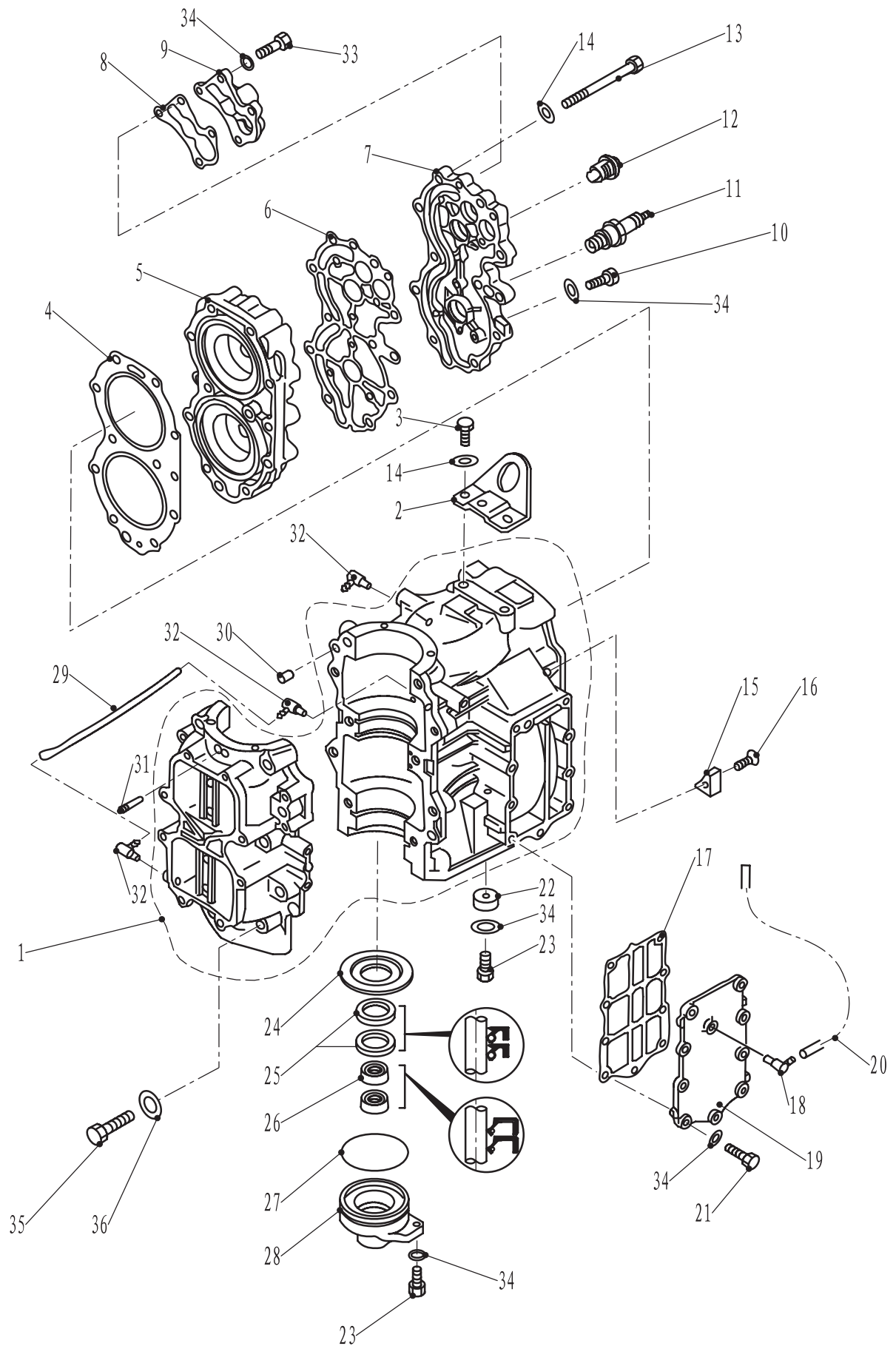
[illegible]

零部件名称:

气缸和曲轴箱

PARTS NAME:

CYLINDER & CRANKCASE



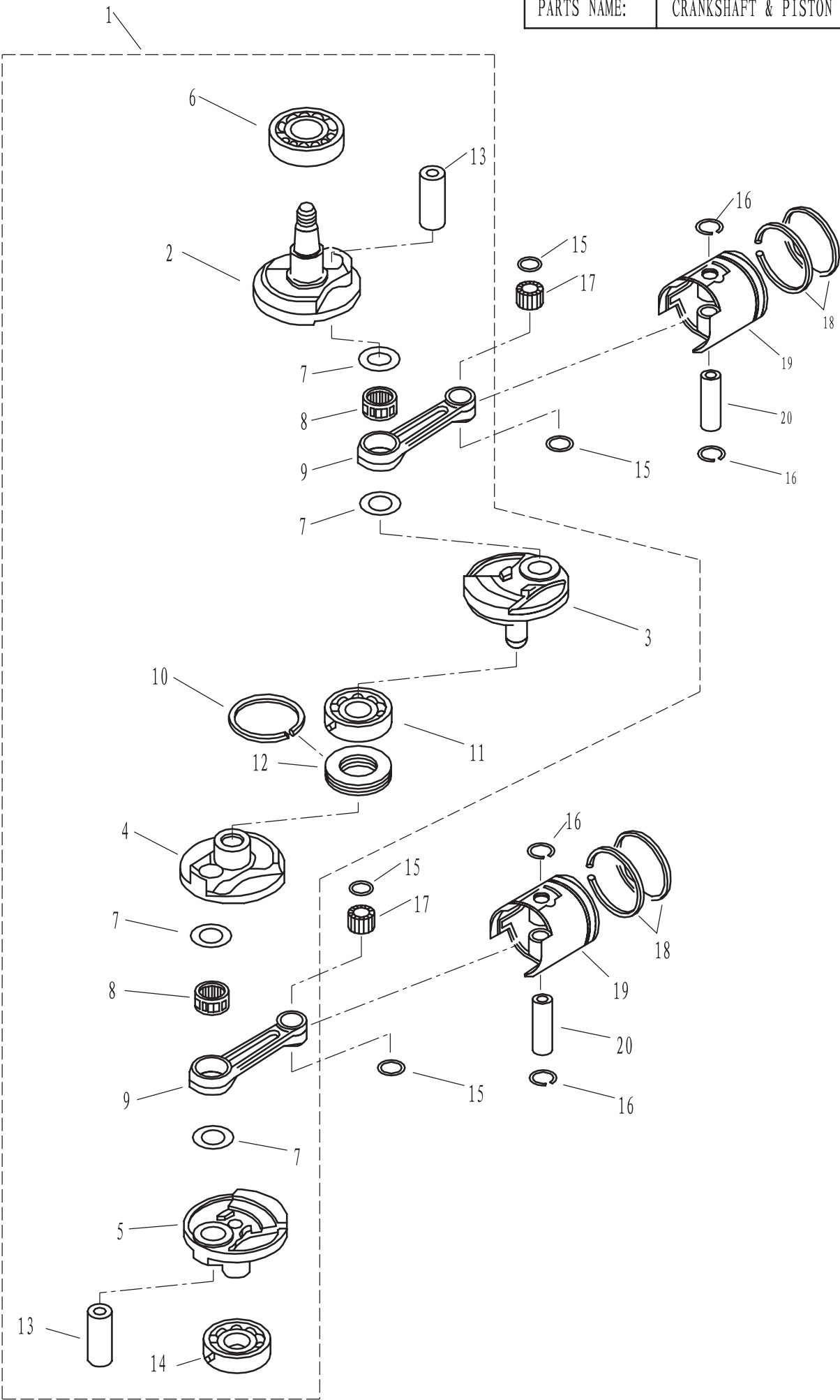
[illegible]

零部件名称:

曲轴活塞

PARTS NAME:

CRANKSHAFT & PISTON



[illegible]

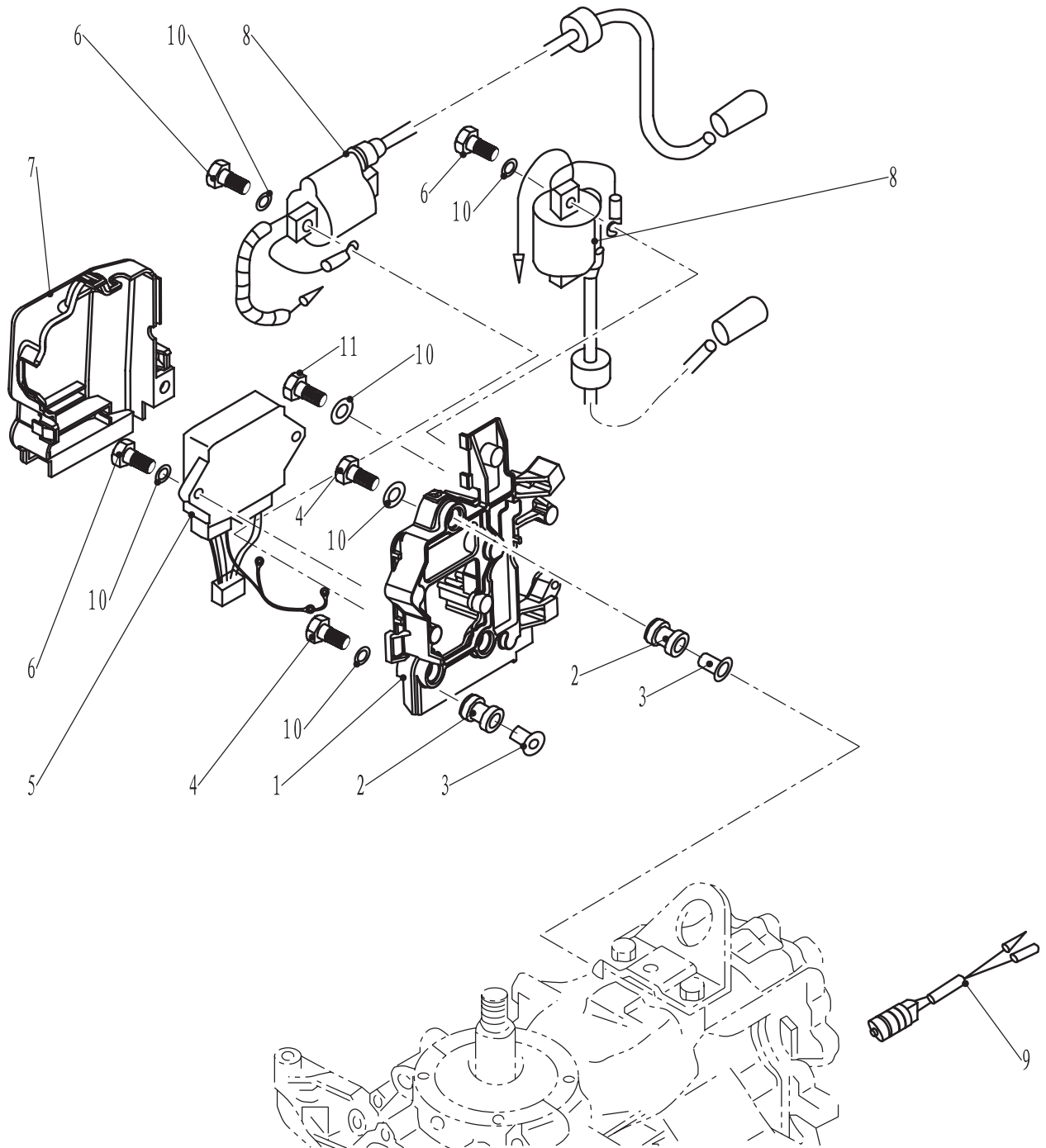
[illegible]

零部件名称:

电气

PARTS NAME:

ELECTRICAL



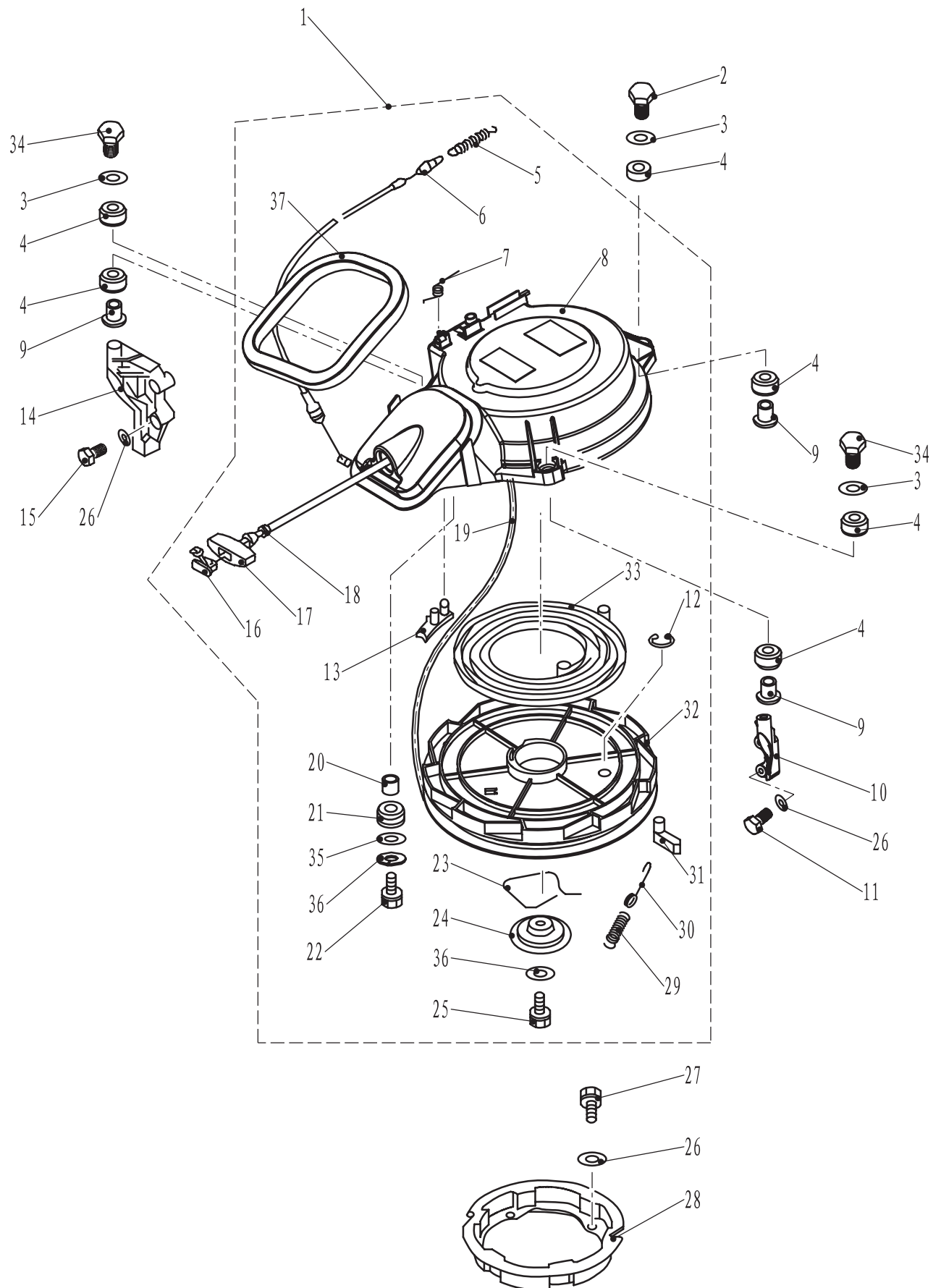
[illegible]

零部件名称:

起动器

PARTS NAME:

STARTER



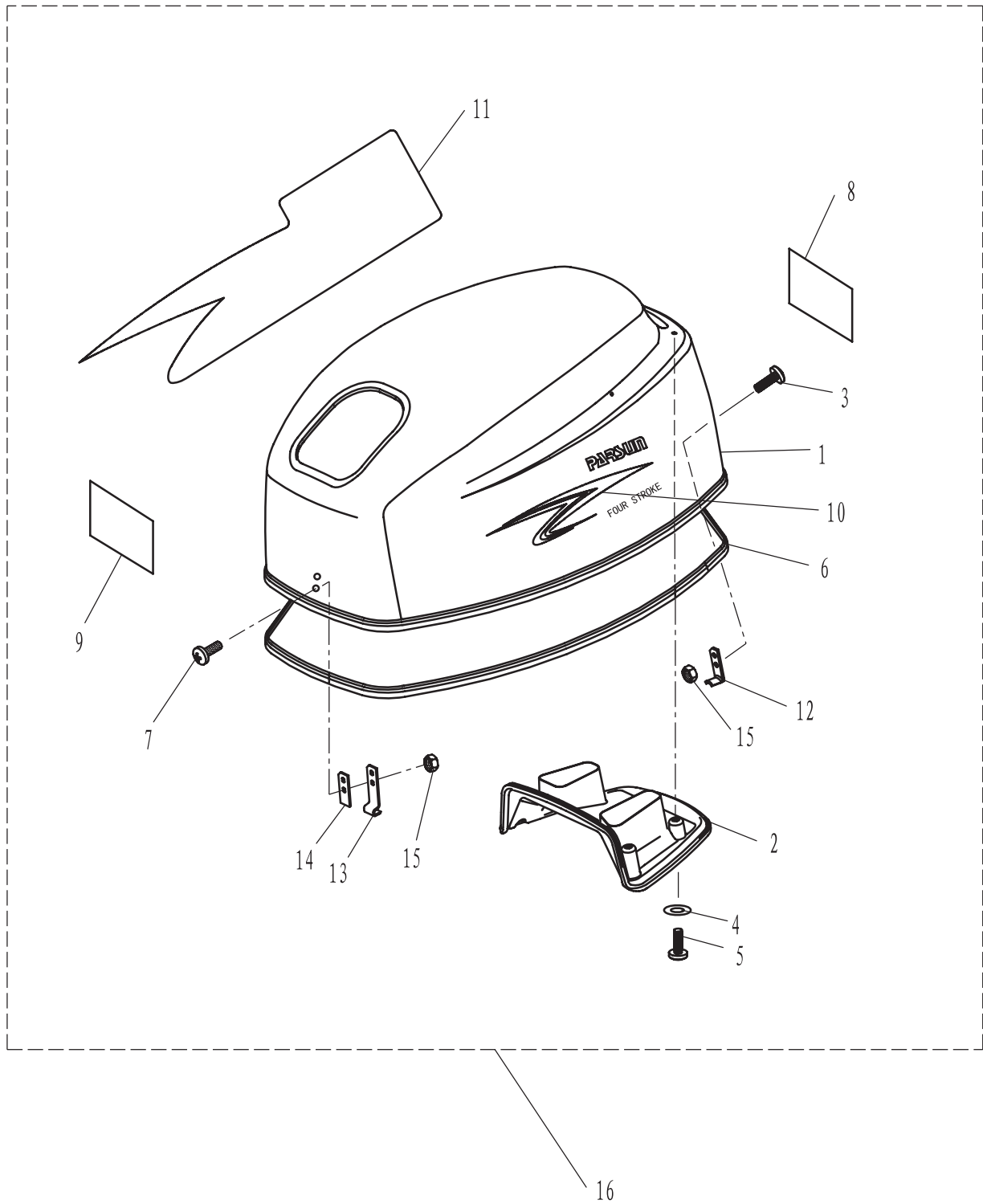
[illegible]

零部件名称:

顶罩

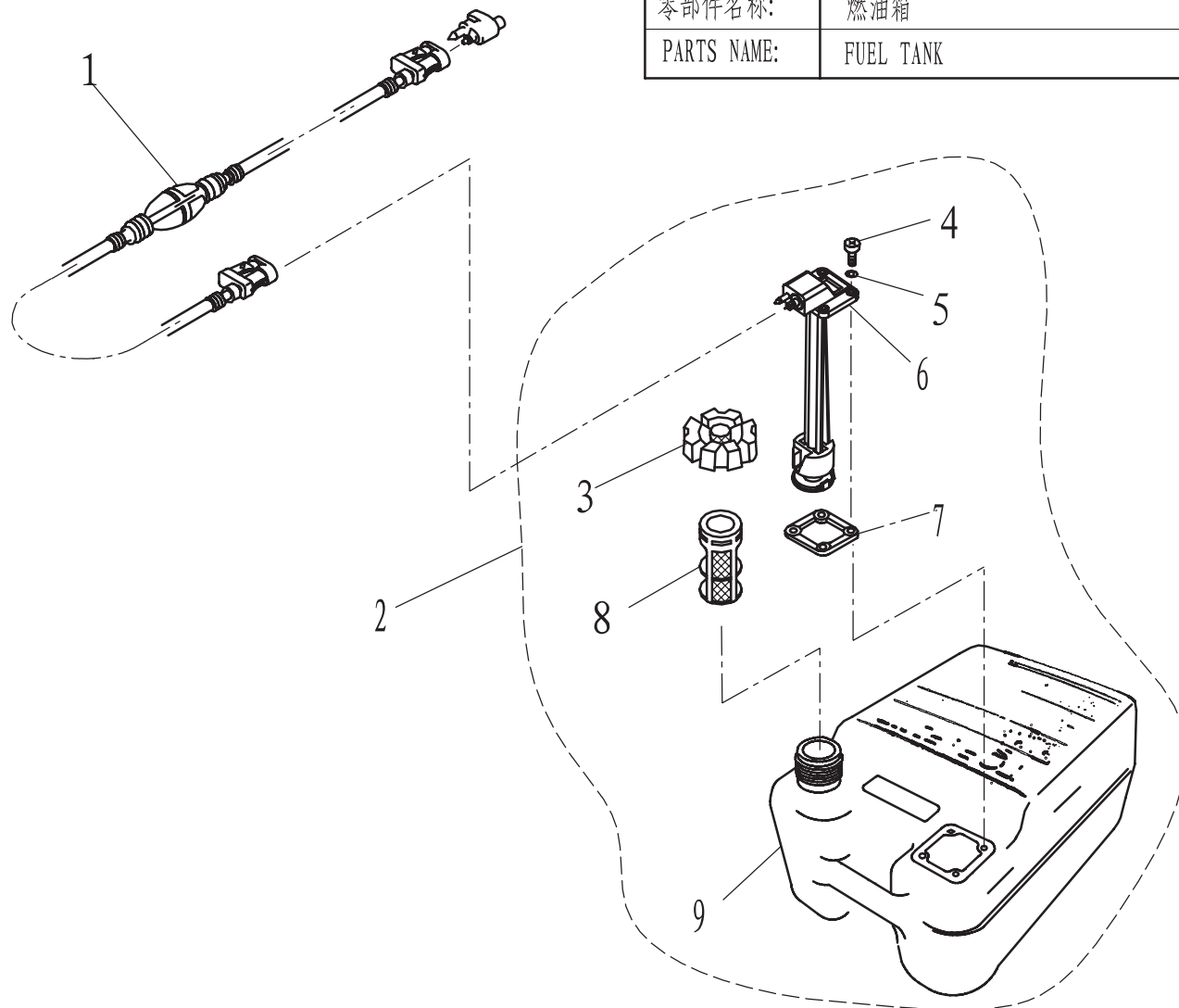
PARTS NAME:

TOP COWLING



燃油箱

FUEL TANK

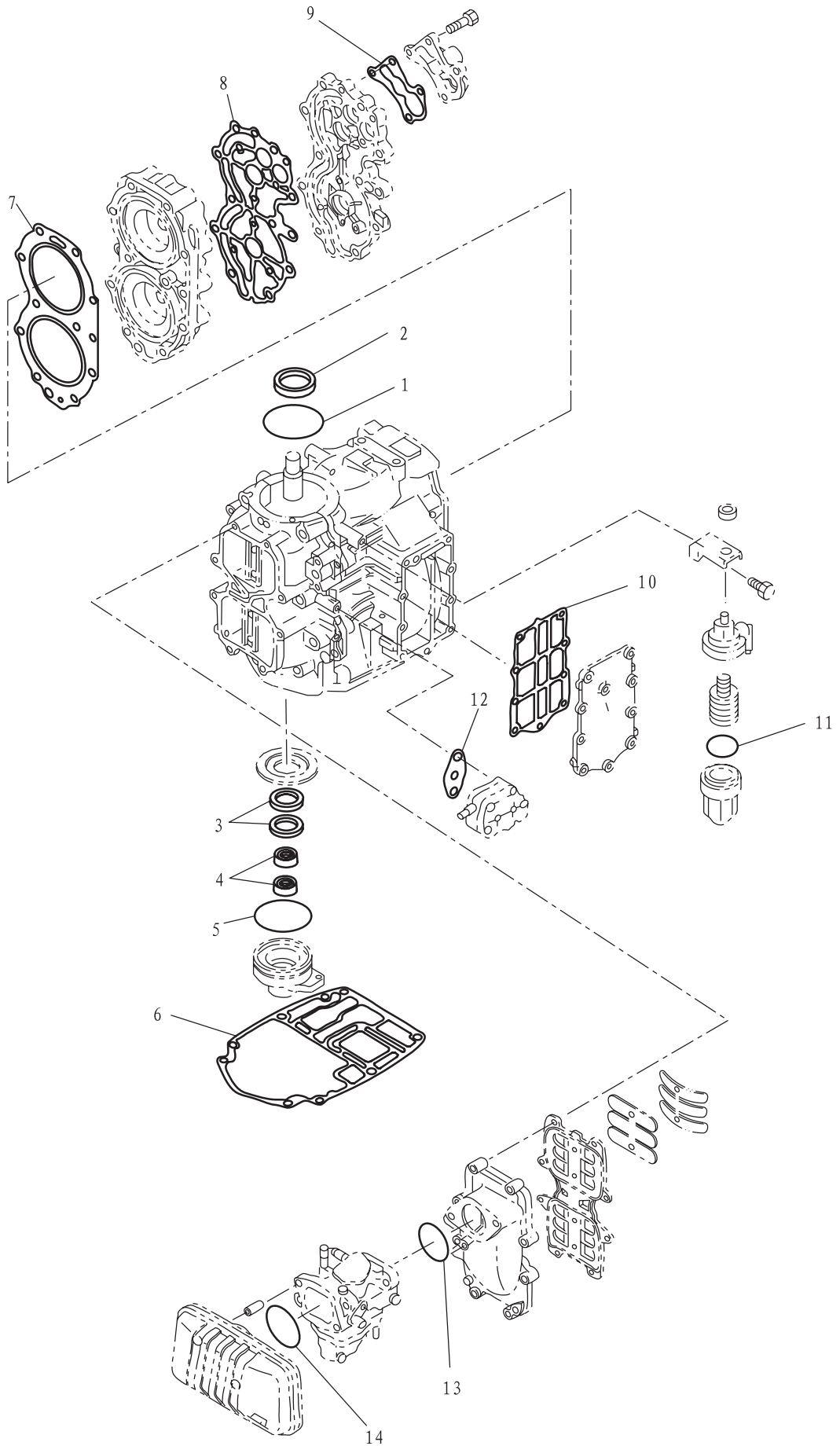
[illegible]

零部件名称:

修理套件1

PARTS NAME:

REPAIR KIT 1



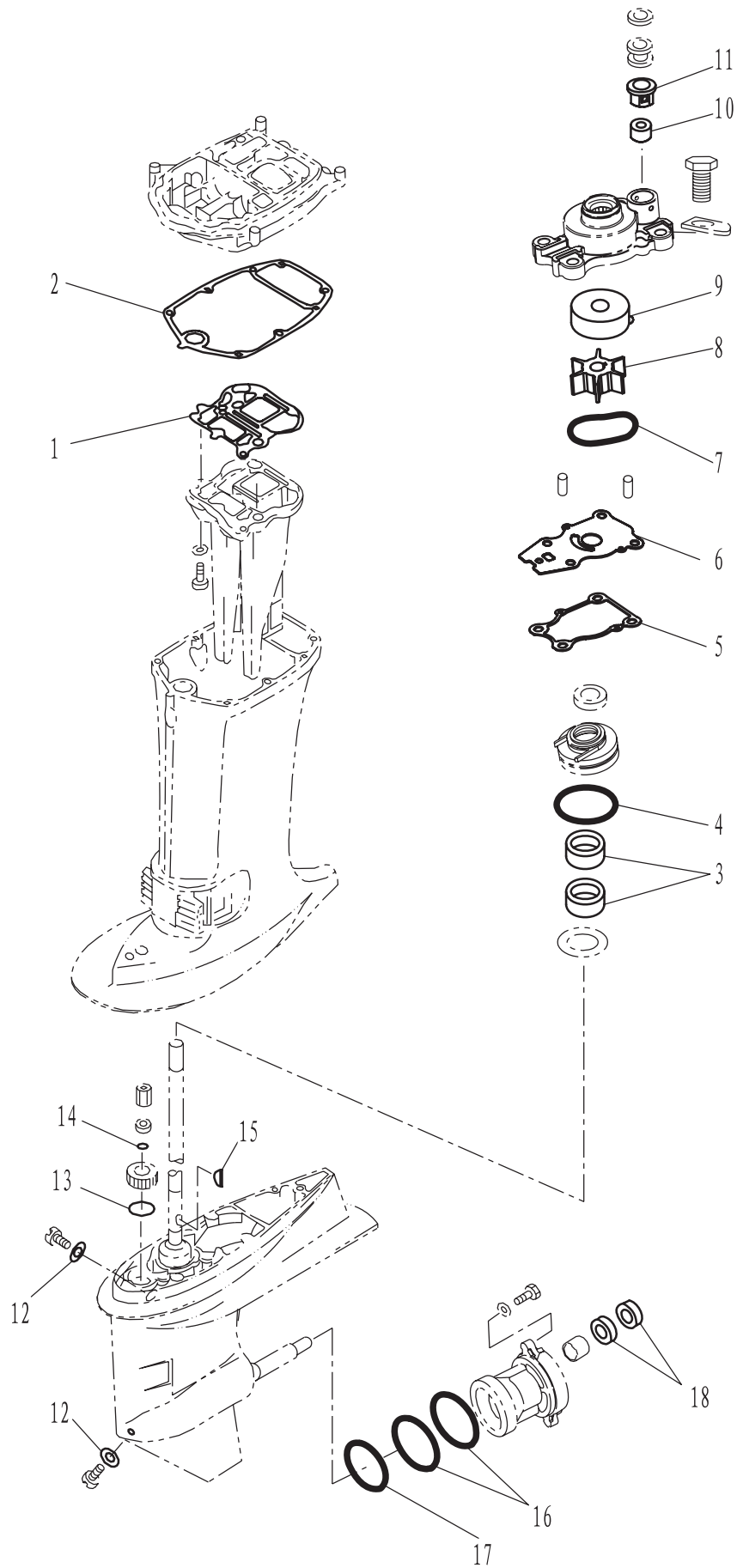
[illegible]

零部件名称:

修理套件2

PARTS NAME:

REPAIR KIT



[illegible]